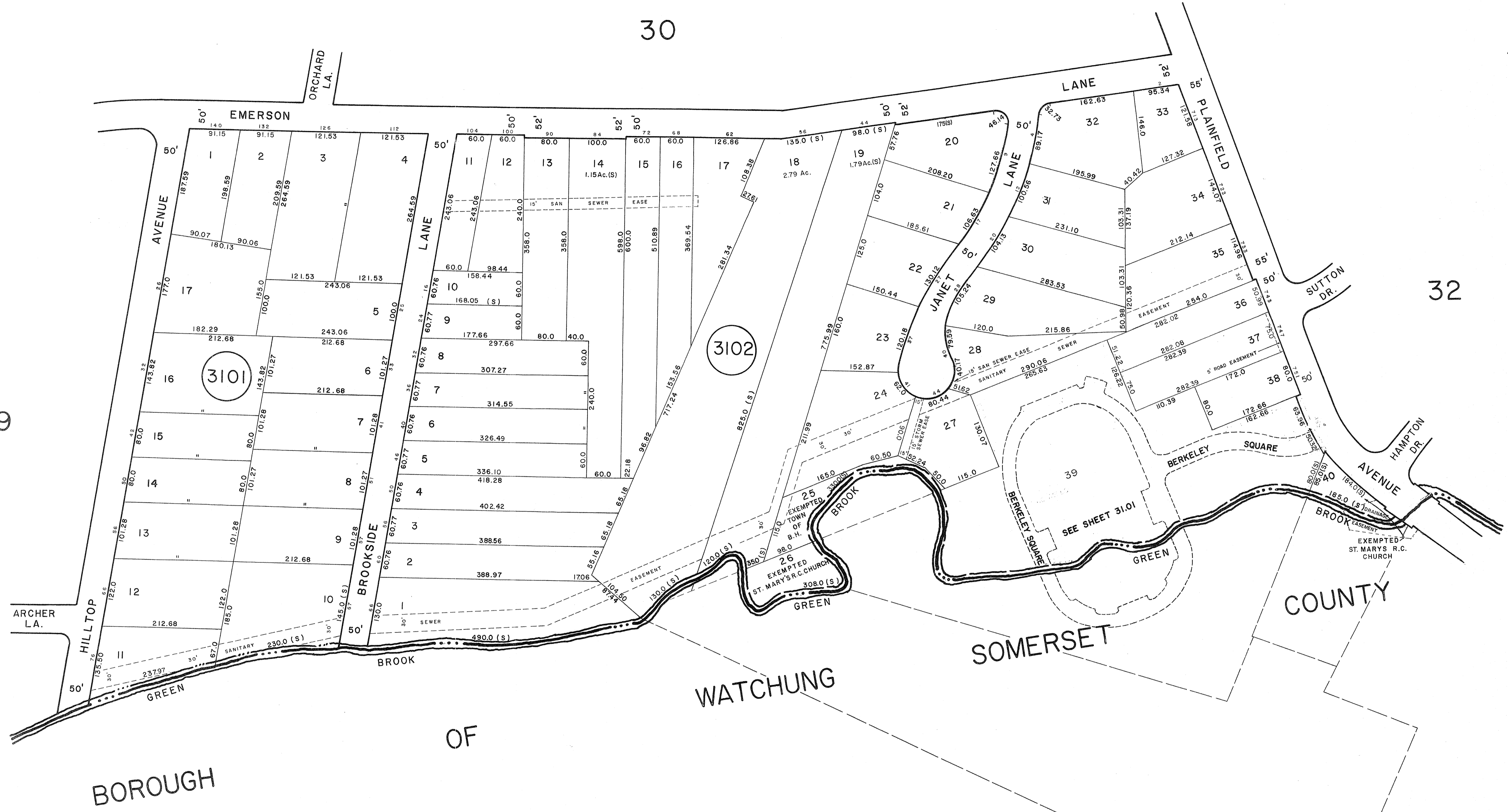
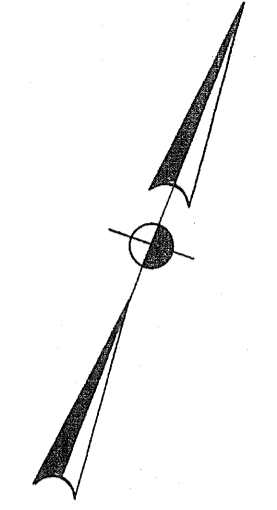


REVISIONS		
DATE	NAME	NO.
DEC. 20, 1994	MASER, SOSINSKI & ASSOCIATES, P.A. BY MICHAEL THOMAS ANGELENE, L.S.	14156
MAY 16, 1997	MATTHEW L. MARTINI, P.L.S.	30088
DEC. 31, 2007	WERNER A. MALL, P.L.S.	37201



NEW JERSEY DEPARTMENT OF THE TREASURY
 DIVISION OF TAXATION
 PUBLIC UTILITY TAX BUREAU
 APPROVED AS A TAX MAP PURSUANT TO THE
 PROVISIONS OF CHAPTER 125, LAWS OF 1913, ETC.
 FOR THE DIRECTOR, DIVISION OF TAXATION.
 BY *J. H. ...*
 DATE: JUL - 1 1977 SERIAL No. 503

TAX MAP
 TOWNSHIP OF BERKELEY HEIGHTS
 UNION COUNTY, NEW JERSEY
 SCALE: 1"=100'
 APRIL 1971
 JAMES P. PURCELL ASSOCIATES
 EAST ORANGE, NEW JERSEY
 JOSEPH A. TOMBRO, L.S.