

PLAINFIELD AVENUE
(60' WIDE R.O.W.)

P L A N T L I S T						
QTY.	KEY	BOTANICAL NAME	COMMON NAME	SIZE	SIZE	SPACING
7	LS	LIQUIDAMBAR STYRACIFLUA	SWEETGUM ROTUNNULOBA (FRUITLESS)	2 1/2" CAL	B & B	25-30'
19	PA	PICEA ABIES	NORWAY SPRUCE	5-6'	B & B	15-20'
7	PO	PLATANUS OCCIDENTALIS	AMERICAN SYCAMORE	2 1/2" CAL	B & B	25-30'
9	QA	QUERCUS ALBA	WHITE OAK	2 1/2" CAL	B & B	25-30'
7	QC	QUERCUS COCCINEA	SCARLET OAK	2 1/2" CAL	B & B	25-30'

DRAWN BY: SP CHECKED BY: WGH
 JOB No. 14-026
 BOOK
 SCALE 1" = 30'
 GRAPHIC SCALE

DATE APRIL 30, 2021
 REVISIONS
 OCTOBER 20, 2021
 JANUARY 12, 2022
 SEPTEMBER 9, 2022
 SEPTEMBER 30, 2022
 DECEMBER 6, 2022 SIGHT LINE

CERTIFICATE OF AUTHORIZATION
 No. 24GA27959700

NOTES

Murphy & Hollows Associates LLC
 CIVIL ENGINEERING AND SURVEYING
 331 ELM STREET, STIRLING, NJ 07980
 908.580.1255 murphyhollows@gmail.com

FINAL MAJOR SUBDIVISION PLAN
 WESTMINSTER PRESBYTERIAN CHURCH
 LOT 32 BLOCK 2006
 MOUNTAIN AVENUE &
 PLAINFIELD AVENUE
 TOWNSHIP OF
 BERKELEY HEIGHTS
 UNION COUNTY
 NEW JERSEY
 TREE PLAN

AIDAN T. MURPHY
 N.J. LIC. PROFESSIONAL ENGINEER #21319
 N.J. PROFESSIONAL PLANNER #2531

William G. Hollows
WILLIAM G. HOLLOWES
 N.J. LIC. PROFESSIONAL ENGINEER
 & LAND SURVEYOR #27473
 N.J. PROFESSIONAL PLANNER #2530

FILE LF14-026 SHEET 10 OF 15

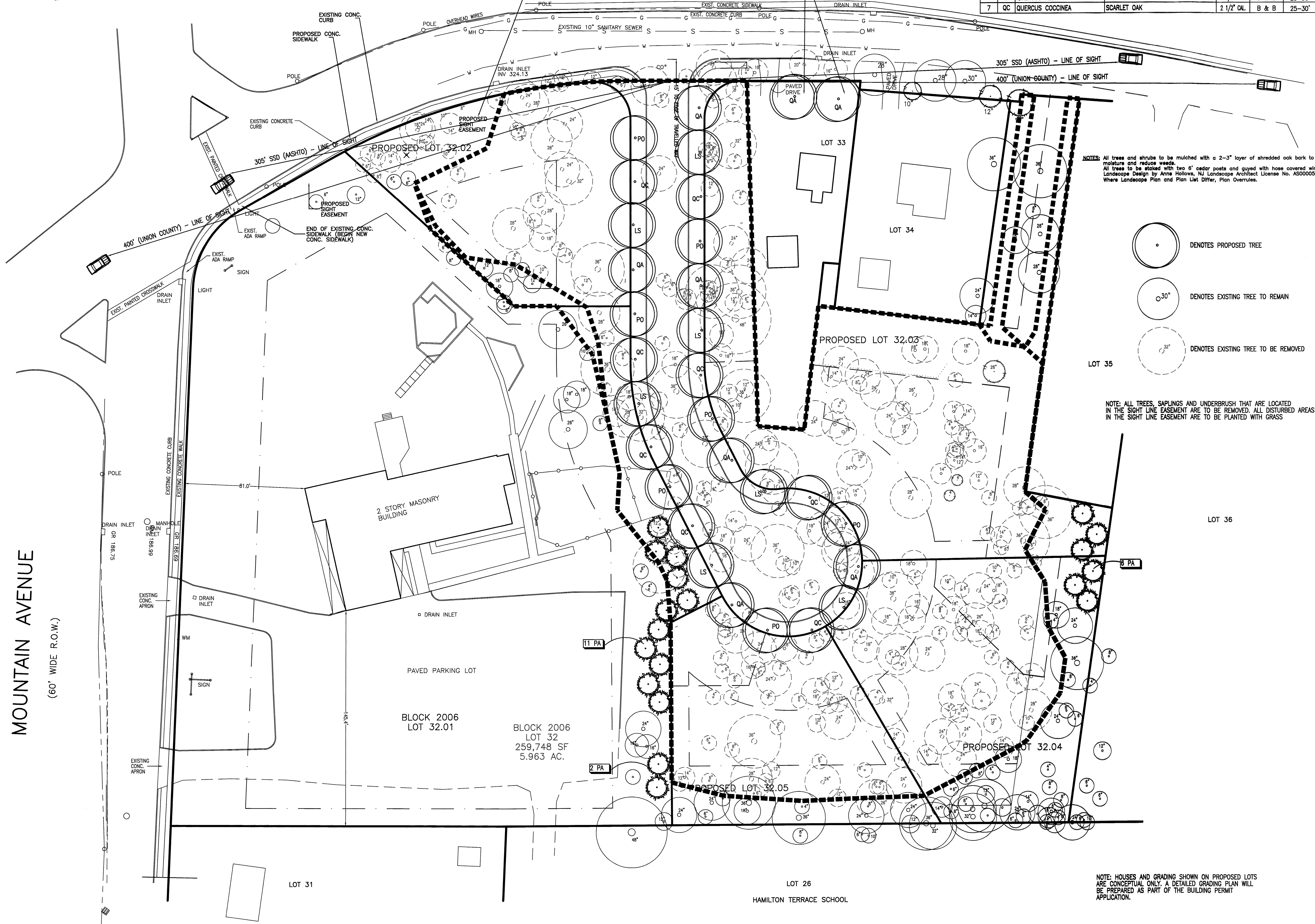
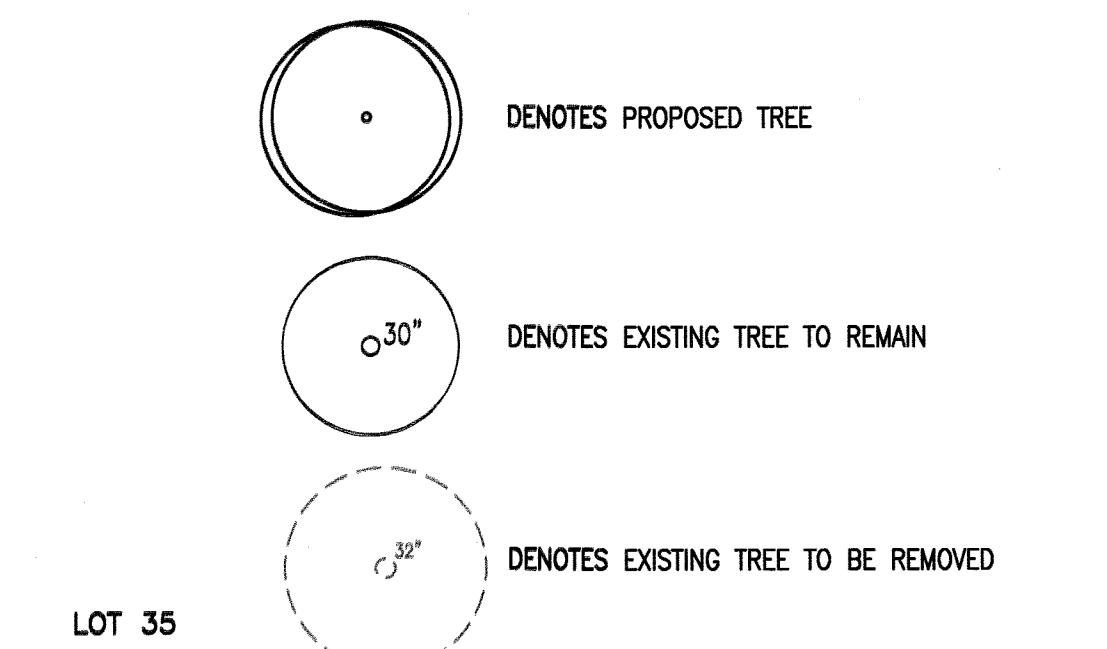


ALL VEGETATION IN THE PROPOSED SIGHT EASEMENT IS TO BE REMOVED AND THE AREA IS TO BE PLANTED WITH GRASS

2 NEW STREET TREES ARE TO BE INSTALLED

NOTES: All trees and shrubs to be mulched with a 2-3" layer of shredded oak bark to retain moisture and reduce weeds. All trees to be staked with two 6" cedar posts and guyed with hose covered wire. Landscape Design by Anne Hollows, NJ Landscape Architect License No. AS00005500. Where Landscape Plan and Plant List Differ, Plant List Overrules.

NOTE: ALL TREES, SAPLINGS AND UNDERBRUSH THAT ARE LOCATED IN THE SIGHT LINE EASEMENT ARE TO BE REMOVED. ALL DISTURBED AREAS IN THE SIGHT LINE EASEMENT ARE TO BE PLANTED WITH GRASS



MOUNTAIN AVENUE
(60' WIDE R.O.W.)

N:\CAD Drawings\2014\14-026\SUBDIVISION\FINAL\REV5\14-026SUBFINAL5.dwg, 12/8/2022 8:58:36 AM