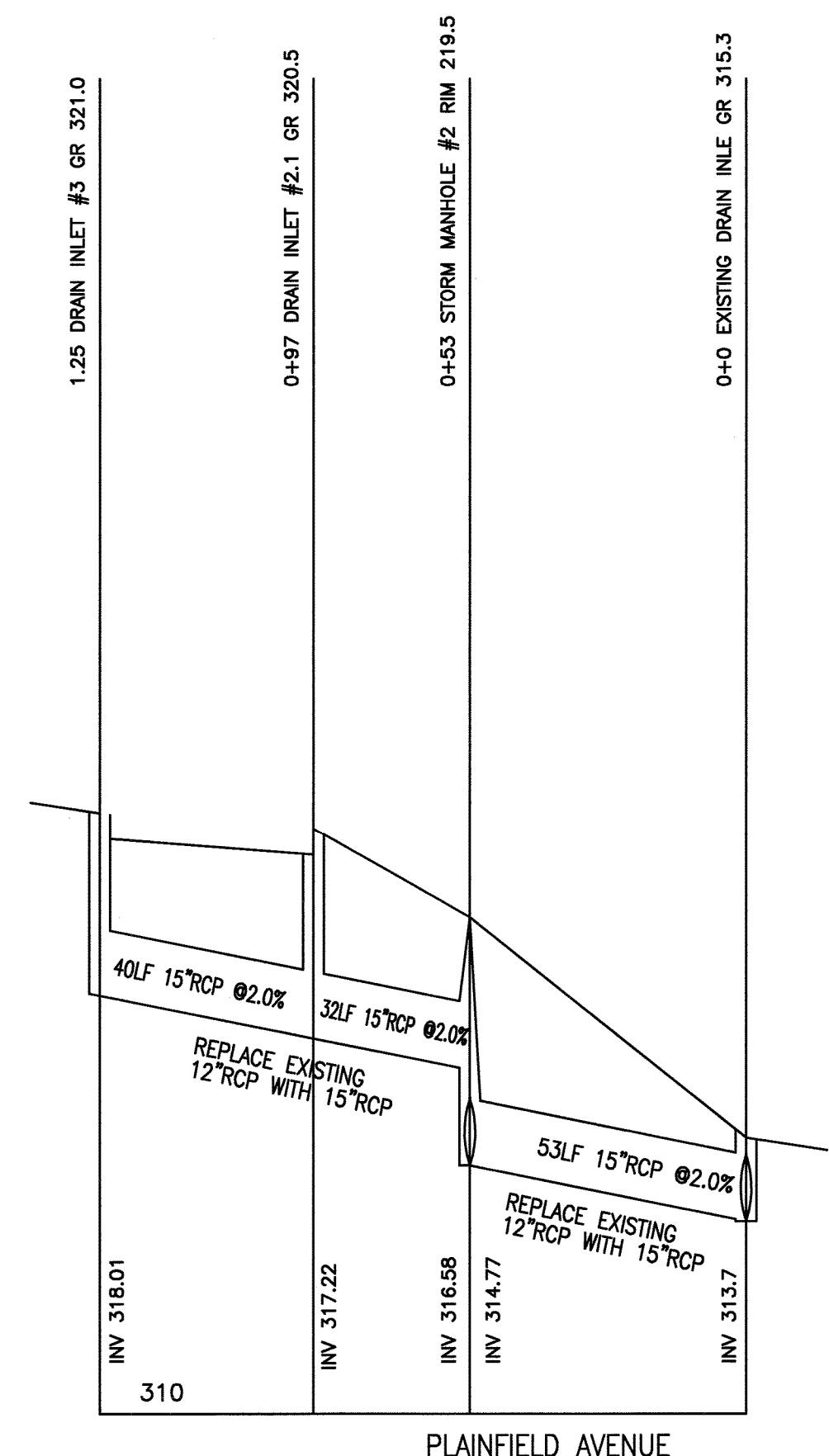
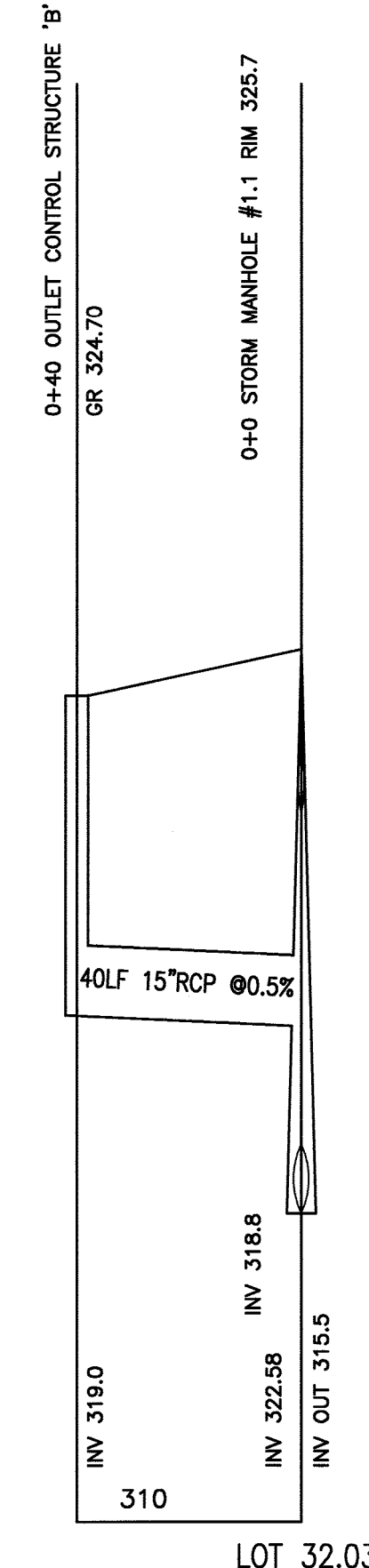


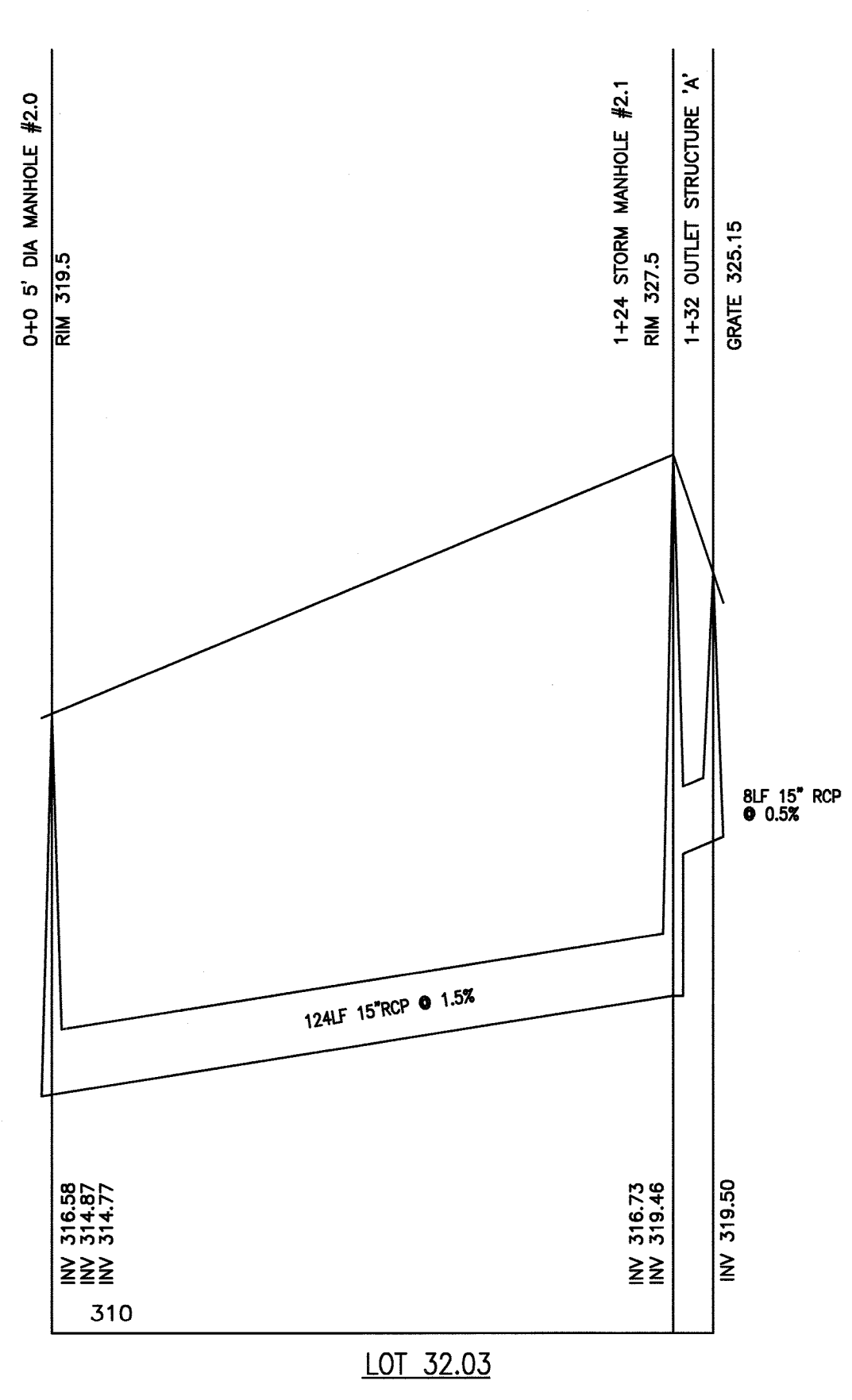
N:\CAD Drawings\2014\14-026\SUBDIVISION\FINAL\REV5\14-026SUBFINAL5.dwg, 12/6/2022 4:54:51 PM



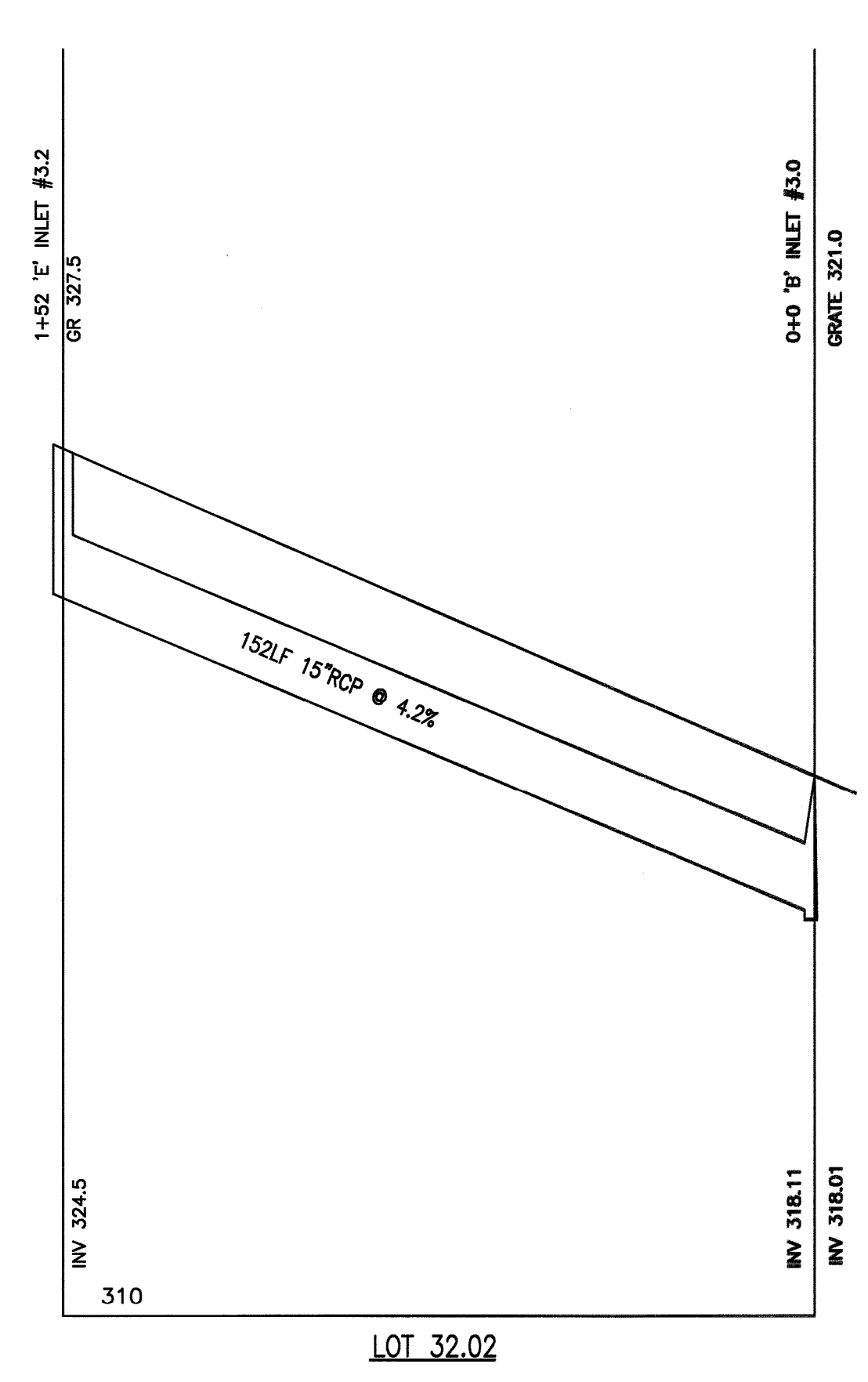
PLAINFIELD AVENUE



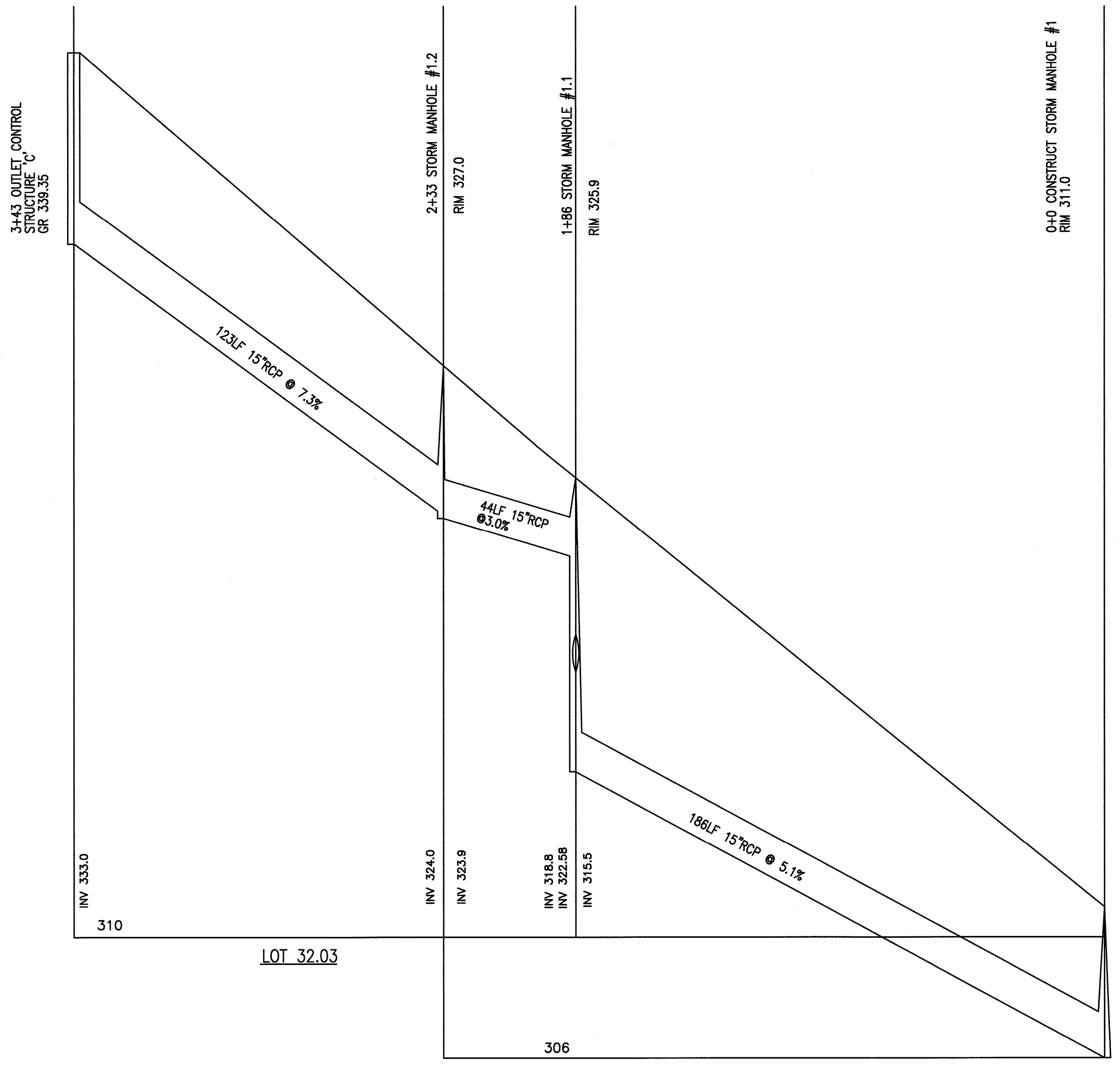
LOT 32.03



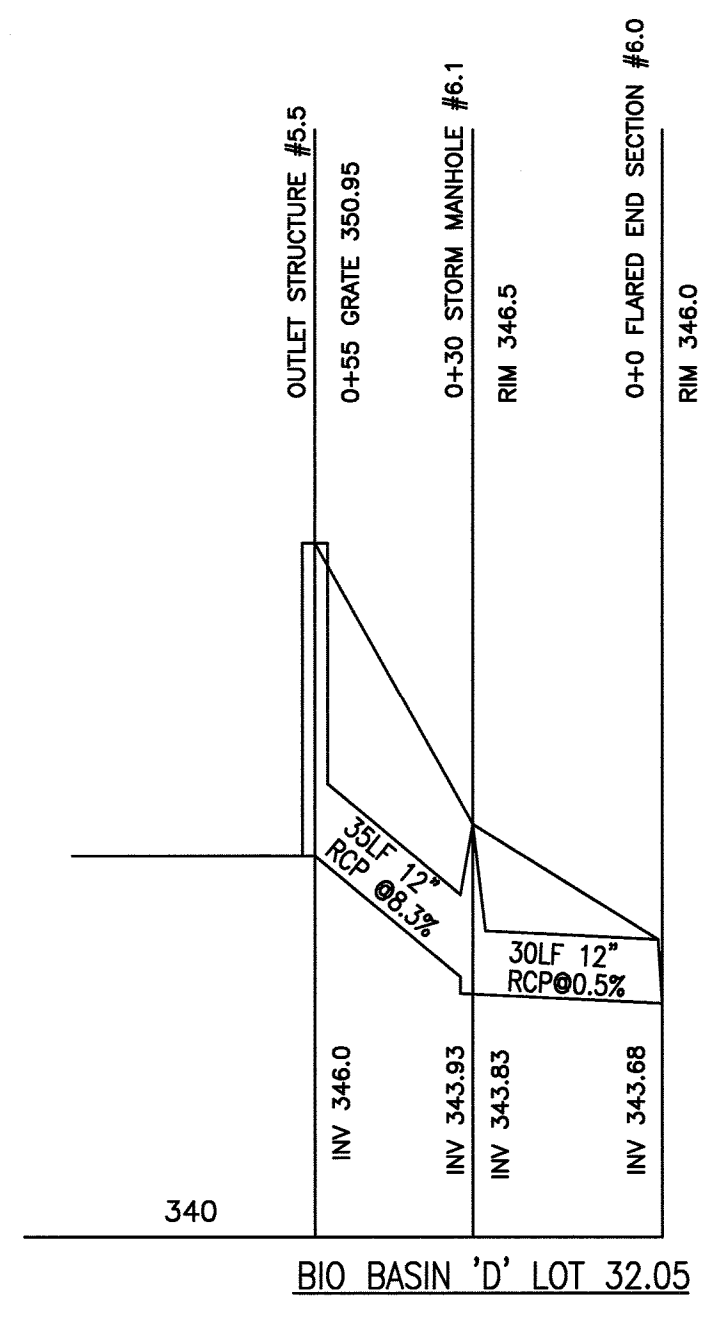
LOT 32.03



LOT 32.02



LOT 32.03



BIO BASIN 'D' LOT 32.05

DRAWN BY: SP	CHECKED BY: WGH
JOB No. 14-026	
BOOK	
SCALE 1" = 30'	
GRAPHIC SCALE	
DATE APRIL 30, 2021	
REVISIONS OCTOBER 20 2021 JANUARY 12, 2022 SEPTEMBER 9, 2022 SEPTEMBER 30, 2022 DECEMBER 6, 2022 SIGHT LINE	
CERTIFICATE OF AUTHORIZATION No. 24GA27959700	
NOTES	
<p>Murphy & Hollows Associates LLC <small>CIVIL ENGINEERING AND SURVEYING</small> <small>331 ELM STREET, STIRLING, NJ 07980</small> <small>908.580.1255 murphyhollows@gmail.com</small></p> <p>FINAL MAJOR SUBDIVISION PLAN WESTMINSTER PRESBYTERIAN CHURCH LOT 32 BLOCK 2006 MOUNTAIN AVENUE & PLAINFIELD AVENUE TOWNSHIP OF BERKELEY HEIGHTS UNION COUNTY NEW JERSEY CONSTRUCTION PROFILE</p> <p>AIDAN T. MURPHY <small>N.J. LIC. PROFESSIONAL ENGINEER #21319</small> <small>N.J. PROFESSIONAL PLANNER #2531</small></p> <p><i>William G. Hollows</i> WILLIAM G. HOLLOWES <small>N.J. LIC. PROFESSIONAL ENGINEER & LAND SURVEYOR #27473</small> <small>N.J. PROFESSIONAL PLANNER #2530</small></p>	
FILE LF14-026	SHEET 9 OF 15