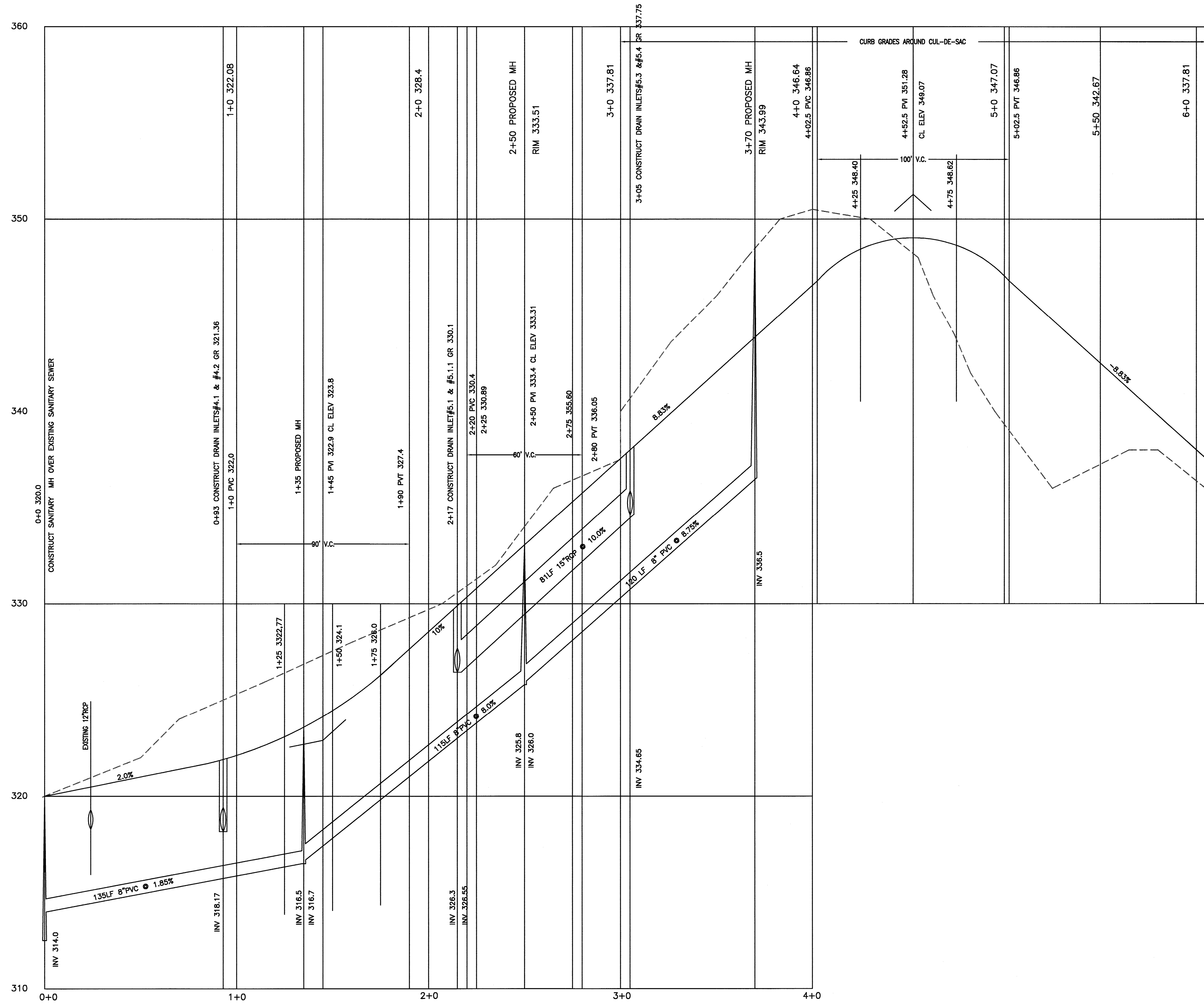
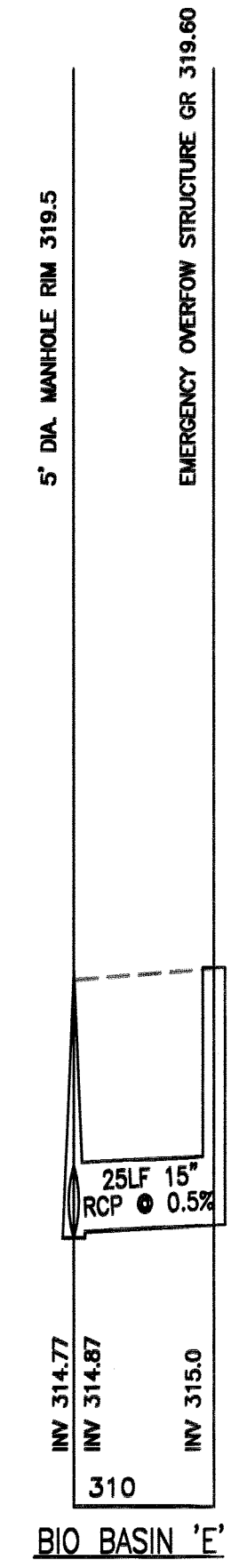
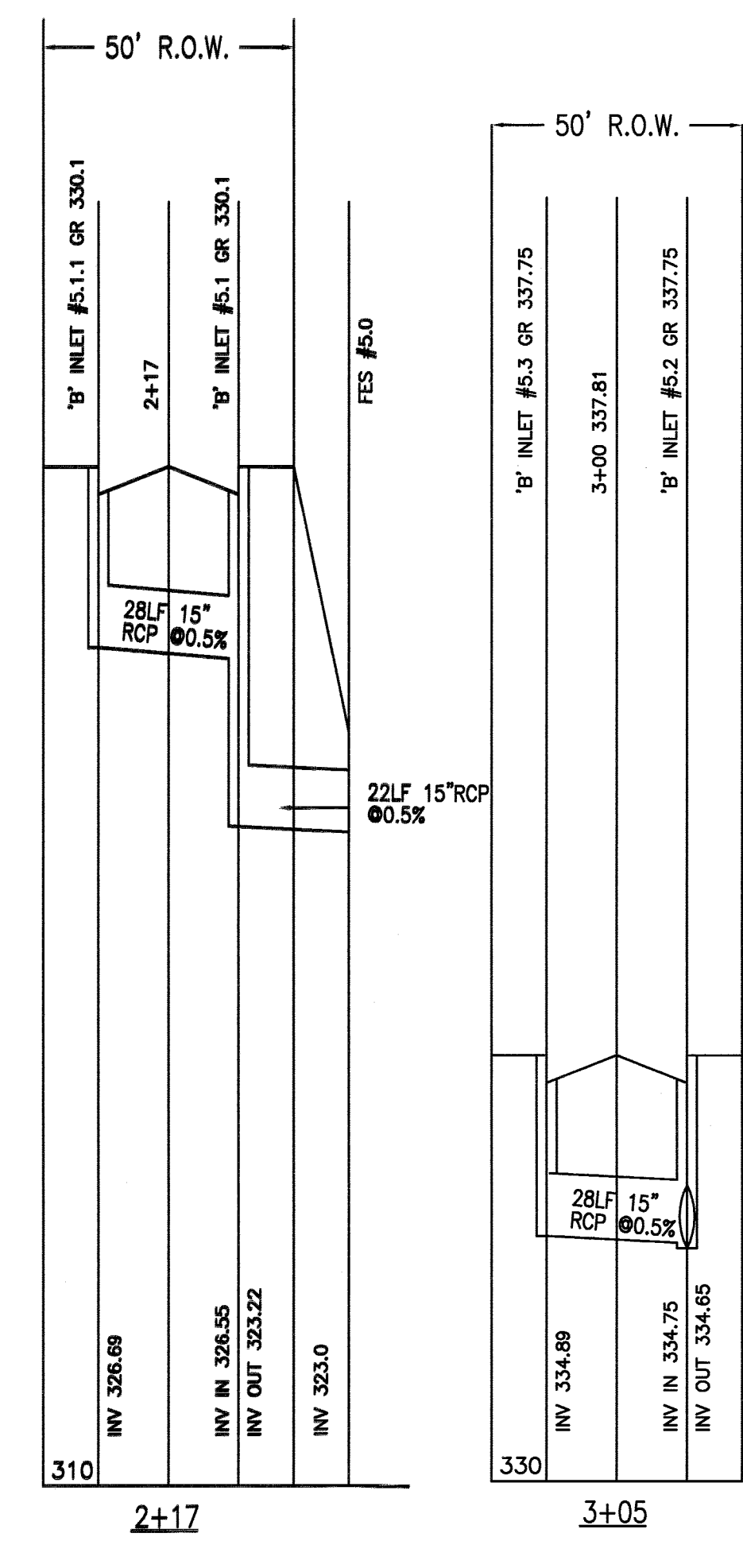
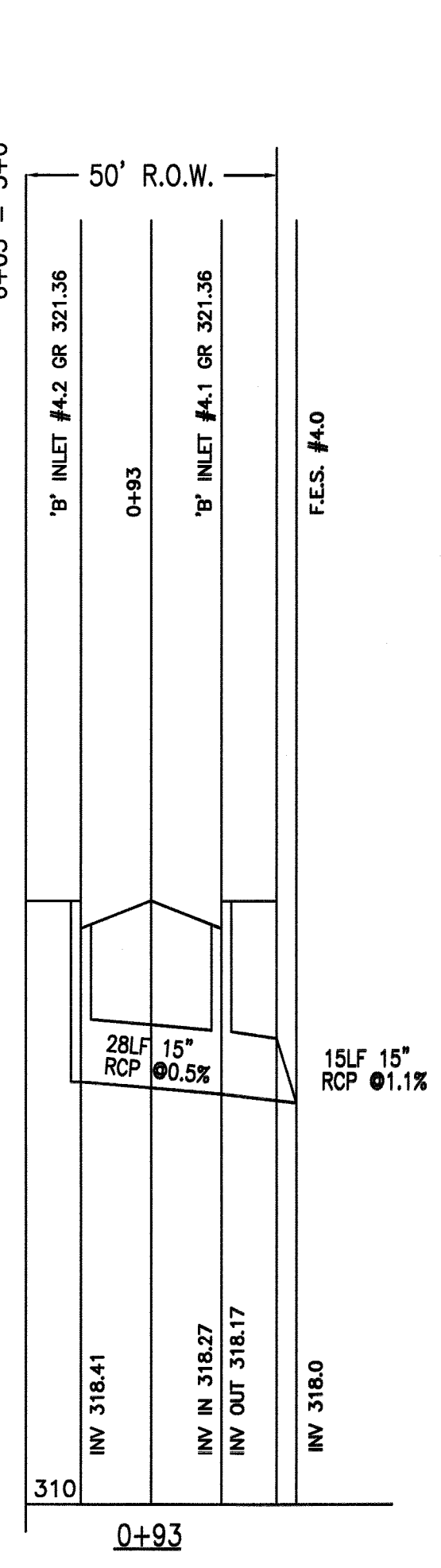

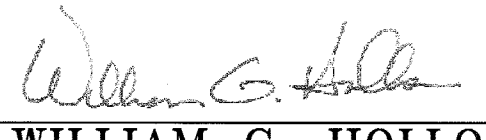


N:\CAD Drawings\2014\14-026\SUBDIVISION\FINAL\REV5\14-026SUBFINAL5.dwg, 12/6/2022 4:54:33 PM



WESTMINSTER COURT PROFILE
SCALE: 1" = 30' HORIZ.
1" = 5' VERT.



DRAWN BY: SP	CHECKED BY: WGH
JOB No. 14-026	
BOOK	
SCALE 1" = 30'	
GRAPHIC SCALE	
DATE APRIL 30, 2021	
REVISIONS OCTOBER 20, 2021 JANUARY 12, 2022 SEPTEMBER 9, 2022 SEPTEMBER 30, 2022 DECEMBER 6, 2022 SIGHT LINE	
CERTIFICATE OF AUTHORIZATION No. 24GA27959700	
NOTES	
 Murphy & Hollows Associates LLC <small>CIVIL ENGINEERING AND SURVEYING 331 ELM STREET, STIRLING, NJ 07980 908.580.1295 murphyhollows@gmail.com</small>	
FINAL MAJOR SUBDIVISION PLAN WESTMINSTER PRESBYTERIAN CHURCH LOT 32 BLOCK 2006 MOUNTAIN AVENUE & PLAINFIELD AVENUE TOWNSHIP OF BERKELEY HEIGHTS UNION COUNTY NEW JERSEY CONSTRUCTION PROFILE	
AIDAN T. MURPHY <small>N.J. LIC. PROFESSIONAL ENGINEER #21319 N.J. PROFESSIONAL PLANNER #2531</small>	
 WILLIAM G. HOLLOWES <small>N.J. LIC. PROFESSIONAL ENGINEER & LAND SURVEYOR #27473 N.J. PROFESSIONAL PLANNER #2530</small>	
FILE LF14-026	SHEET 8 OF 15