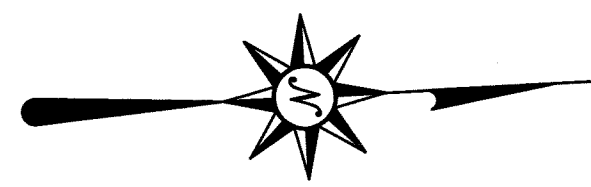


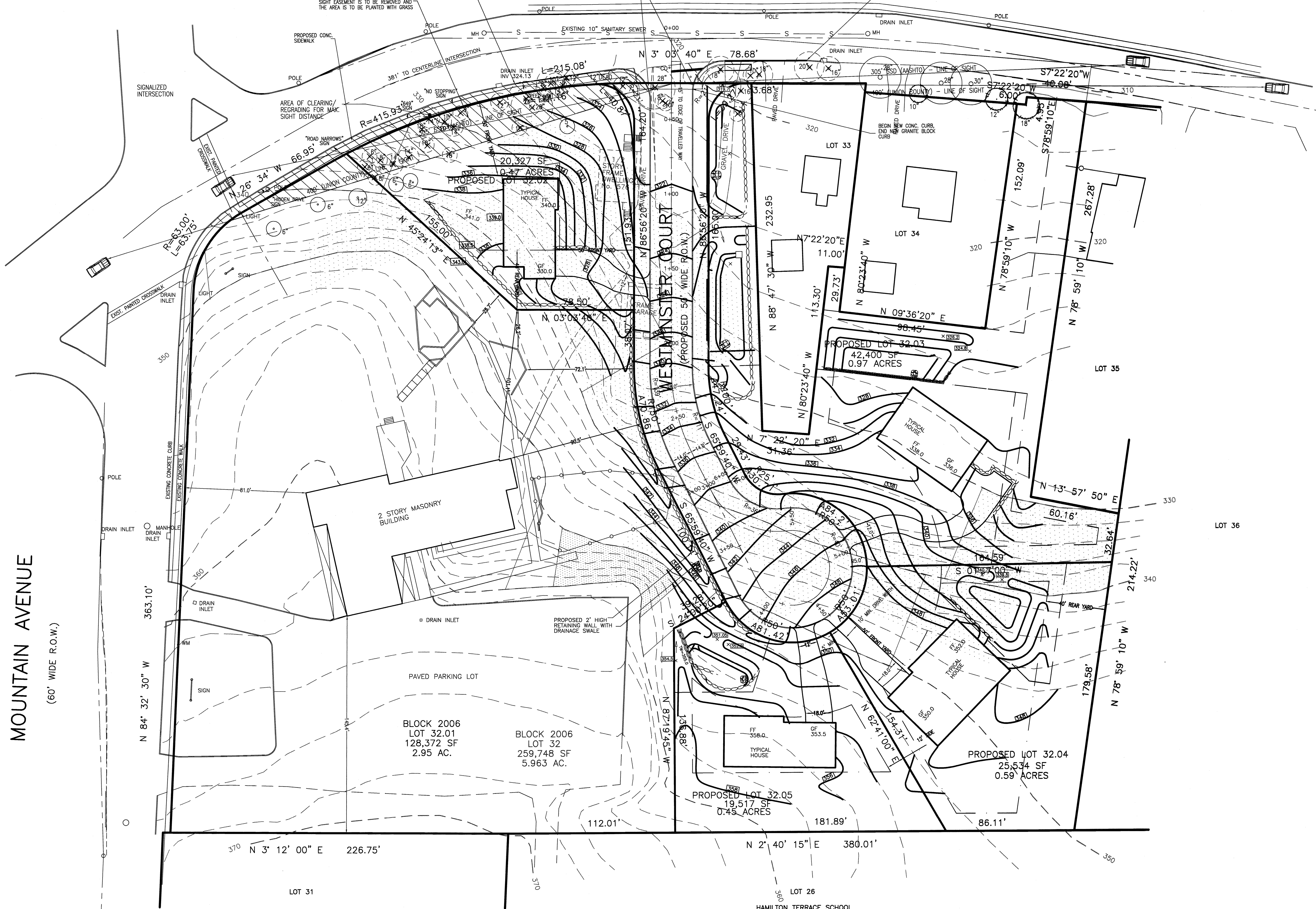
N:\CAD Drawings\2014\14-026\SUBDIVISION\FINAL\REV5\14-026SIGHT LINE5.dwg, 12/8/2022, 8:52:32 AM



PLAINFIELD AVENUE

(60' WIDE R.O.W.)

NOTE: STREET NAMES TO BE APPROVED BY THE MUNICIPAL TAX ASSESSOR



DRAWN BY:	SP	CHECKED BY:	WGH
JOB No.	14-026		
BOOK			
SCALE	1" = 30'		
GRAPHIC SCALE			

DATE: APRIL 30, 2021

REVISIONS
OCTOBER 20, 2021
JANUARY 12, 2022
SEPTEMBER 9, 2022
SEPTEMBER 30, 2022
DECEMBER 6, 2022 SIGHT LINE

CERTIFICATE OF AUTHORIZATION No. 24GA27959700

NOTES

Murphy & Hollows Associates LLC
 CIVIL ENGINEERING AND SURVEYING
 331 ELM STREET, STIRLING, NJ 07980
 908.580.1205 murphyhollows@gmail.com

FINAL MAJOR SUBDIVISION PLAN
WESTMINSTER PRESBYTERIAN CHURCH
LOT 32 BLOCK 2006
MOUNTAIN AVENUE &
PLAINFIELD AVENUE
TOWNSHIP OF
BERKELEY HEIGHTS
UNION COUNTY
NEW JERSEY
SIGHT LINE PLAN

AIIDAN T. MURPHY
N.J. LIC. PROFESSIONAL ENGINEER #21319
N.J. PROFESSIONAL PLANNER #2531

William G. Hollows
WILLIAM G. HOLLOWES
N.J. LIC. PROFESSIONAL ENGINEER
& LAND SURVEYOR #27473
N.J. PROFESSIONAL PLANNER #2530

FILE	SHEET
LF14-026	7
	OF
	15