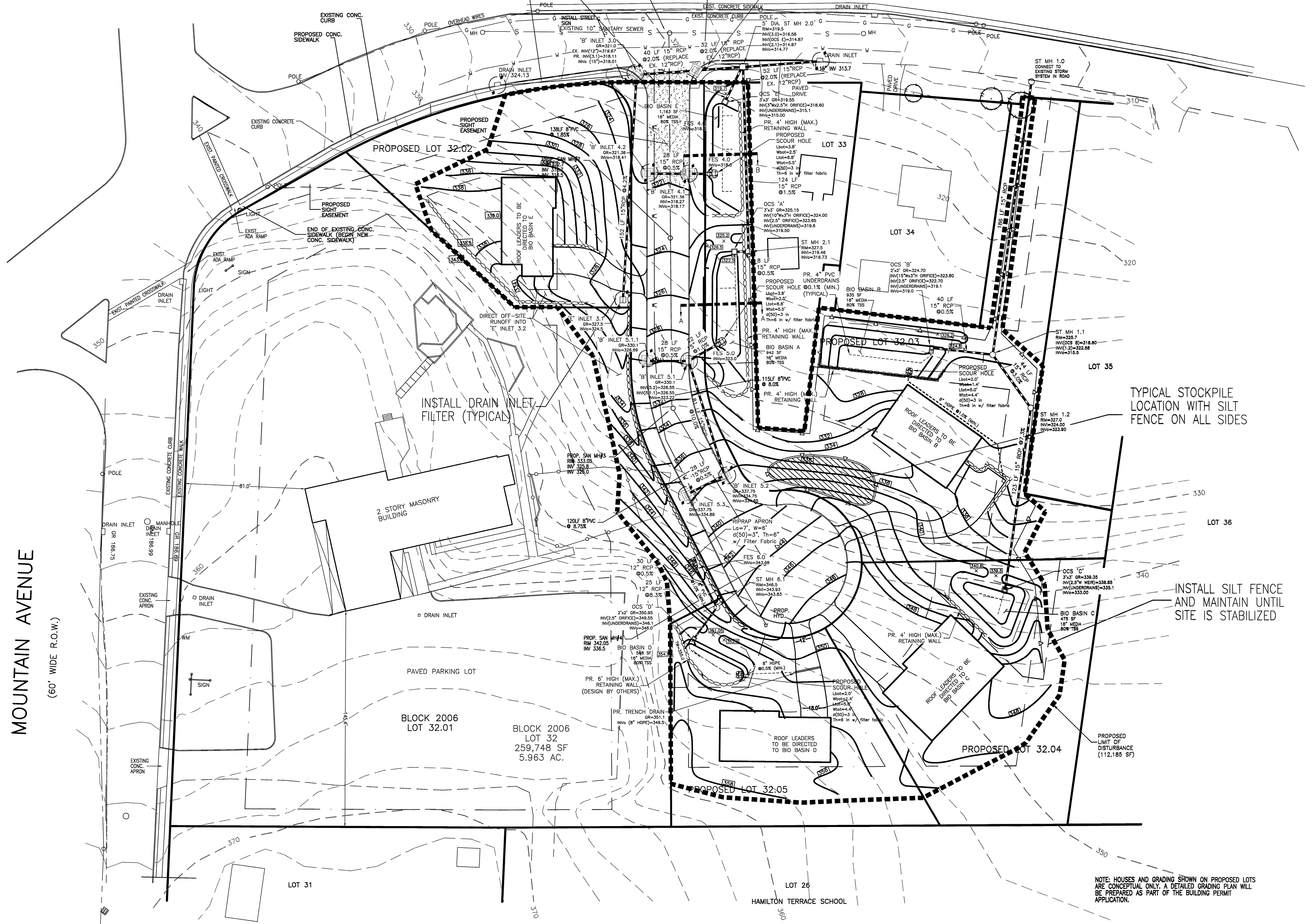




PLAINFIELD AVENUE
(60' WIDE R.O.W.)



MOUNTAIN AVENUE
(60' WIDE R.O.W.)

DRAWN BY: SP	CHECKED BY: WGH
JOB No. 14-026	
BOOK	
SCALE 1" = 30'	
GRAPHIC SCALE	
DATE APRIL 30, 2021	
REVISIONS OCTOBER 20, 2021 JANUARY 12, 2022 SEPTEMBER 9, 2022 SEPTEMBER 30, 2022 DECEMBER 6, 2022 SIGHT LINE	
CERTIFICATE OF AUTHORIZATION No. 24GA27959700	
NOTES	
<h1>Murphy & Hollows Associates LLC</h1> <p>CIVIL ENGINEERING AND SURVEYING 331 ELM STREET, STIRLING, NJ 07980 908.580.1255 murphyhollows@gmail.com</p>	
FINAL MAJOR SUBDIVISION PLAN WESTMINSTER PRESBYTERIAN CHURCH LOT 32 BLOCK 2006 MOUNTAIN AVENUE & PLAINFIELD AVENUE TOWNSHIP OF BERKELEY HEIGHTS UNION COUNTY NEW JERSEY SOIL EROSION PLAN	
AIDAN T. MURPHY N.J. LIC. PROFESSIONAL ENGINEER #21319 N.J. PROFESSIONAL PLANNER #2531	
 WILLIAM G. HOLLOWES N.J. LIC. PROFESSIONAL ENGINEER & LAND SURVEYOR #27473 N.J. PROFESSIONAL PLANNER #2530	
FILE LF14-026	SHEET 6 OF 15

NOTE: HOUSES AND GRADING SHOWN ON PROPOSED LOTS ARE CONCEPTUAL ONLY. A DETAILED GRADING PLAN WILL BE PREPARED AS PART OF THE BUILDING PERMIT APPLICATION.

N:\CAD Drawings\2014\14-026\SUBDIVISION\FINAL\REV5\14-026SUBFINAL5_recover.dwg, 12/7/2022 6:05:07 PM