

DEED BOOK 5494
PAGE 418

SLOPES LEGEND

	DENOTES SLOPES OF 0-14.99% 206,387 SF
	DENOTES SLOPES OF 15-24.99% 51,104 SF
	DENOTES SLOPES OF >25% 2287 SF

PLAINFIELD AVENUE

(60' WIDE R.O.W.)

ALSO KNOWN AS COUNTY ROUTE NO. 622

SOILS
 NenB - NESHAMINY-URBAN LAND COMPLEX, 0-8% SLOPES
 NenC - NESHAMINY-URBAN LAND COMPLEX, 15-25% SLOPES
 AmuB - AMWELL-URBAN LAND COMPLEX, 0-8% SLOPES

DRAWN BY: SP CHECKED BY: WGH

JOB No. 14-026

BOOK

SCALE

1" = 30'



GRAPHIC SCALE

DATE: APRIL 30, 2021

REVISIONS

OCTOBER 20, 2021
 JANUARY 12, 2022
 SEPTEMBER 9, 2022
 SEPTEMBER 30, 2022
 DECEMBER 6, 2022

CERTIFICATE OF AUTHORIZATION
No. 24GA27959700

NOTES

Murphy & Hollows Associates LLC
 CIVIL ENGINEERING AND SURVEYING
 331 ELM STREET, STIRLING, NJ 07980
 908.950.1255 murphyhollows@gmail.com

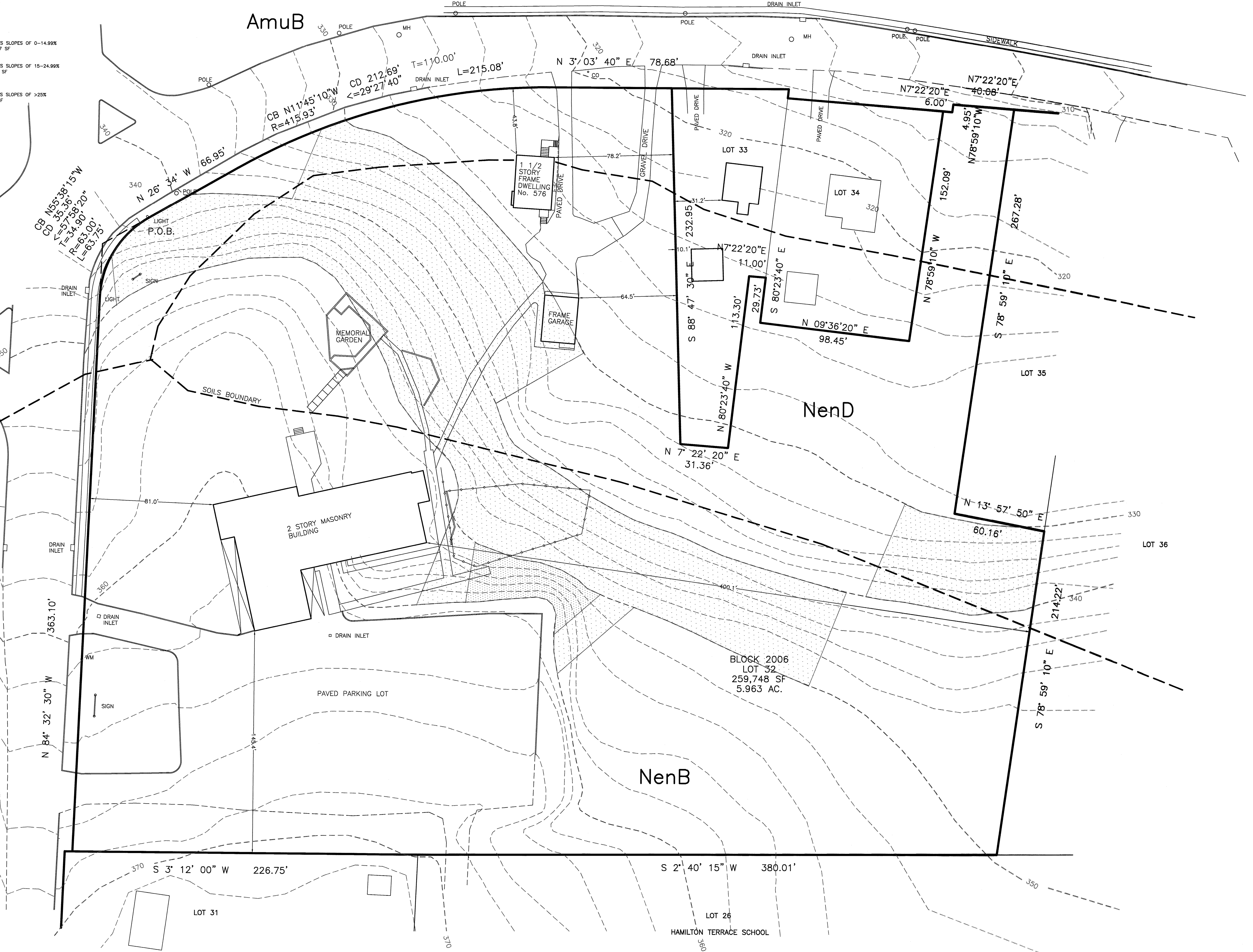
FINAL MAJOR SUBDIVISION PLAN
 WESTMINSTER PRESBYTERIAN CHURCH
 LOT 32 BLOCK 2006
 MOUNTAIN AVENUE &
 PLAINFIELD AVENUE
 TOWNSHIP OF
 BERKELEY HEIGHTS
 UNION COUNTY
 NEW JERSEY
 EXISTING CONDITIONS

AIDAN T. MURPHY
 N.J. LIC. PROFESSIONAL ENGINEER #21319
 N.J. PROFESSIONAL PLANNER #2531

William G. Hollows
WILLIAM G. HOLLOWES
 N.J. LIC. PROFESSIONAL ENGINEER
 & LAND SURVEYOR #27473
 N.J. PROFESSIONAL PLANNER #2530

FILE	SHEET
LF14-026	2 OF 15

MOUNTAIN AVENUE
(60' WIDE R.O.W.)



N:\CAD Drawings\2014\14-026\SUBDIVISION\FINAL_REV5\14-026FINAL5.dwg, 2/6/2022 4:51:40 PM