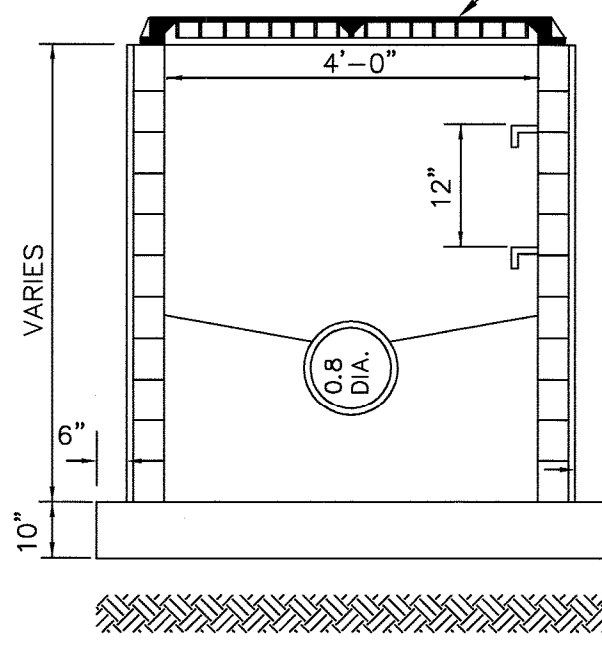
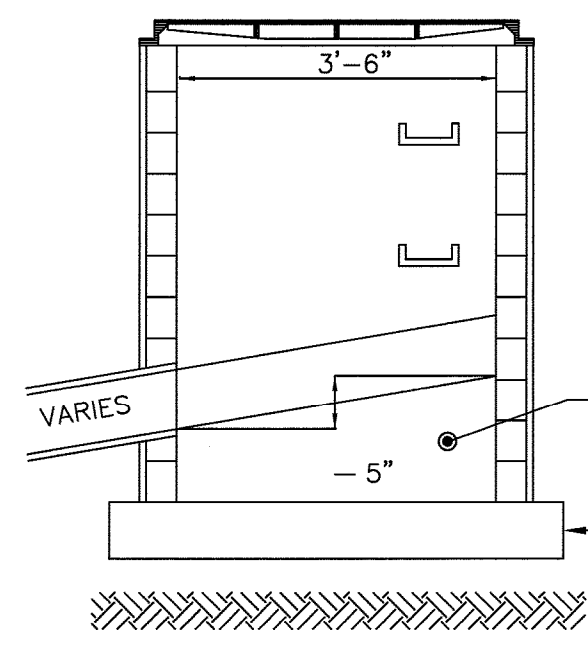


INLET FRAME TO BE CAMPBELL PATERN NO. 3440, WITH NO. 2617 SAFETY GRATE OR APPROVED EQUAL

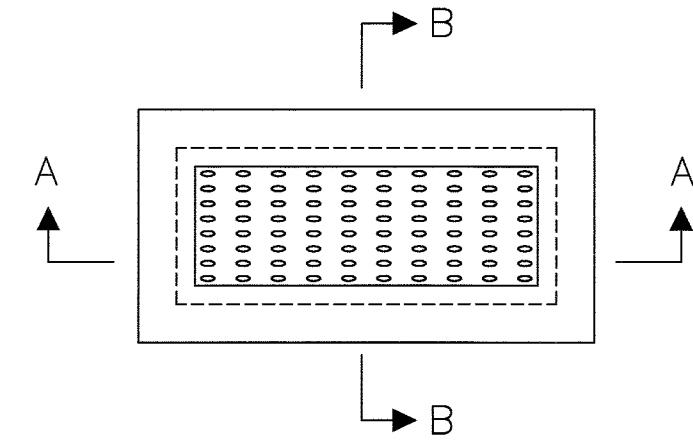


SECTION A - A

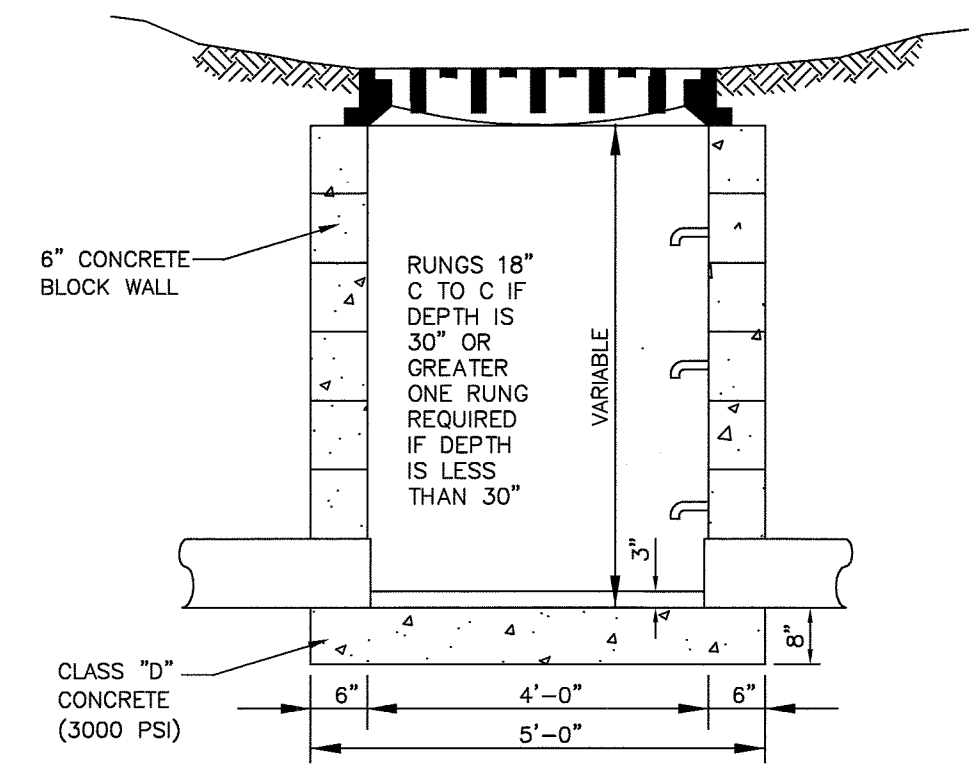


SECTION B - B

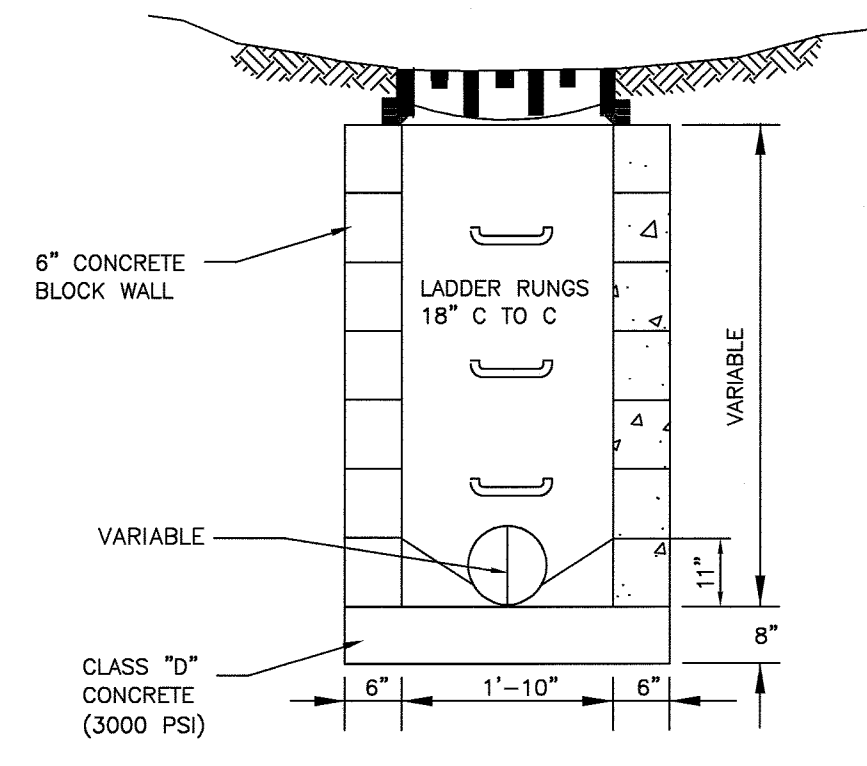
TYPE 'E' INLET  
NOT TO SCALE



CAMPBELL #3402 STANDARD GRATE AND FRAME OR APPROVED EQUAL



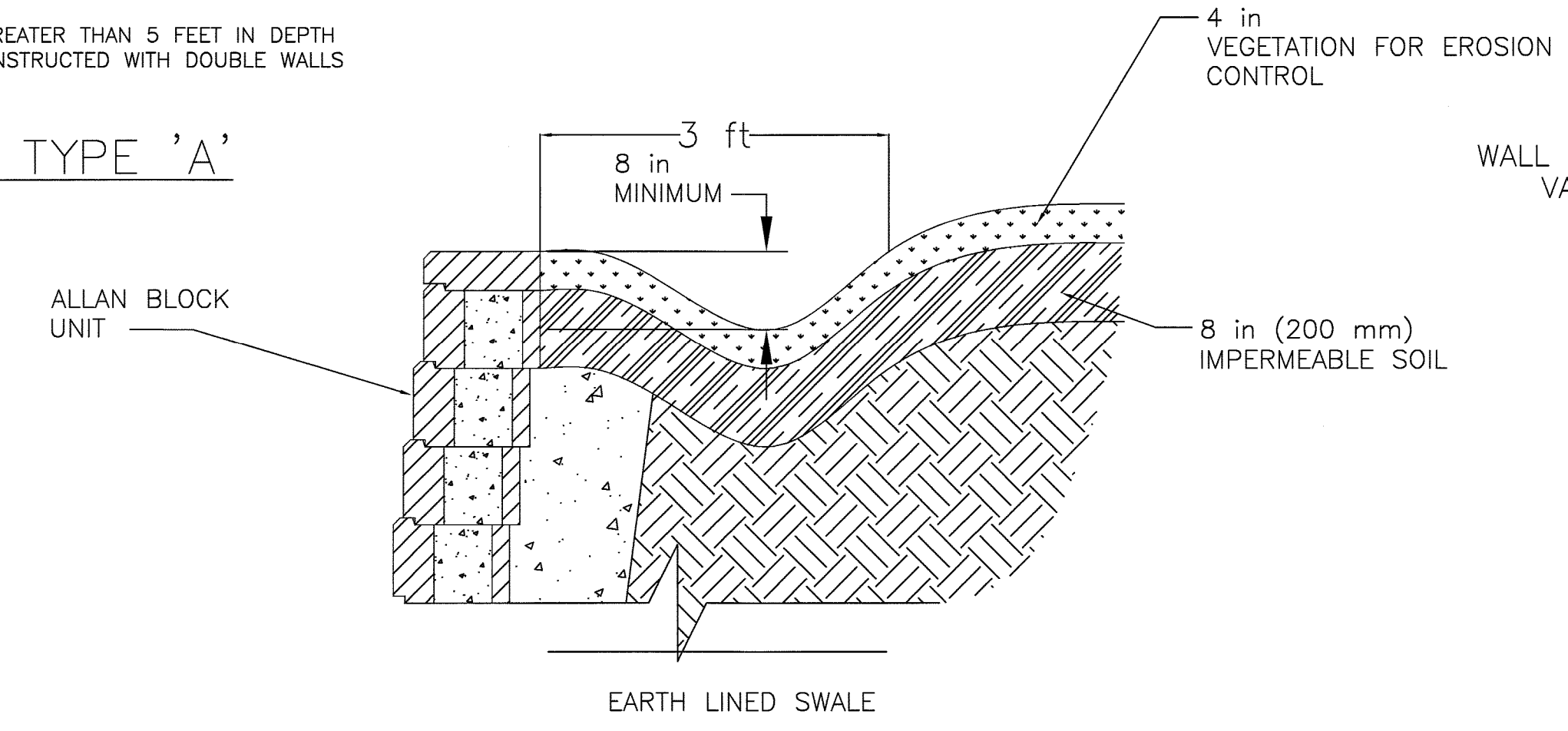
SECTION A-A



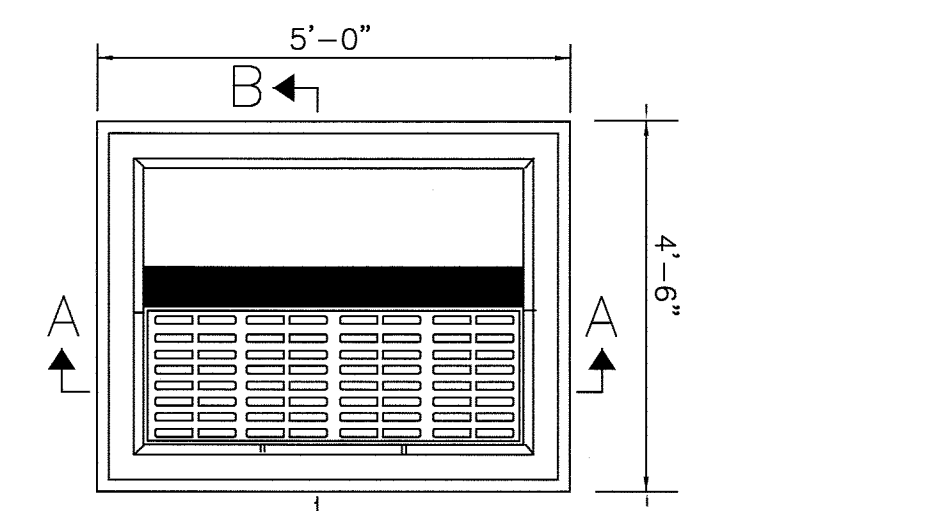
SECTION B-B

NOTE:  
ALL INLETS GREATER THAN 5 FEET IN DEPTH SHALL BE CONSTRUCTED WITH DOUBLE WALLS ON ALL SIDES

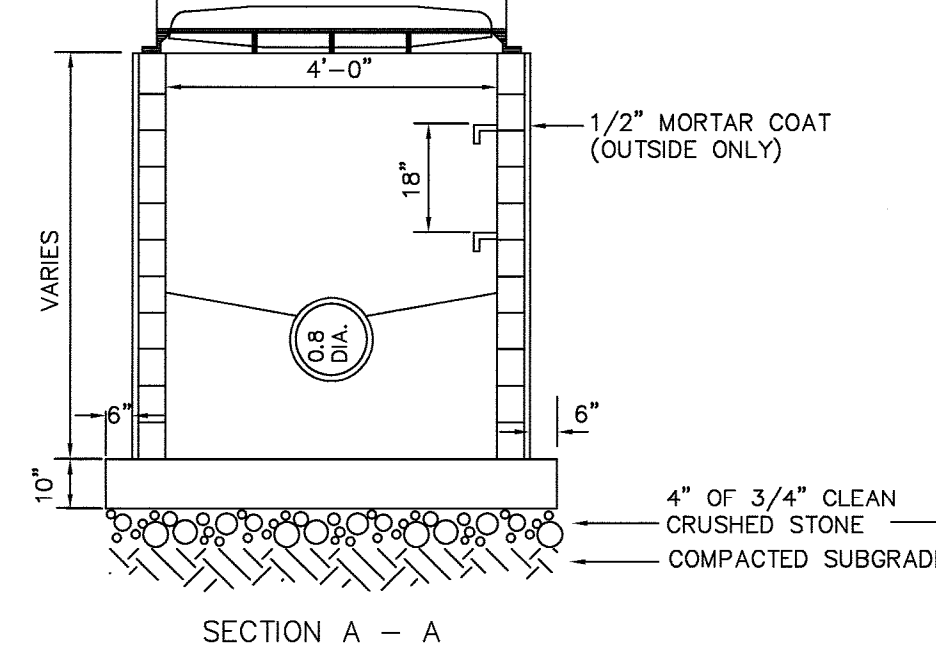
INLET TYPE 'A'



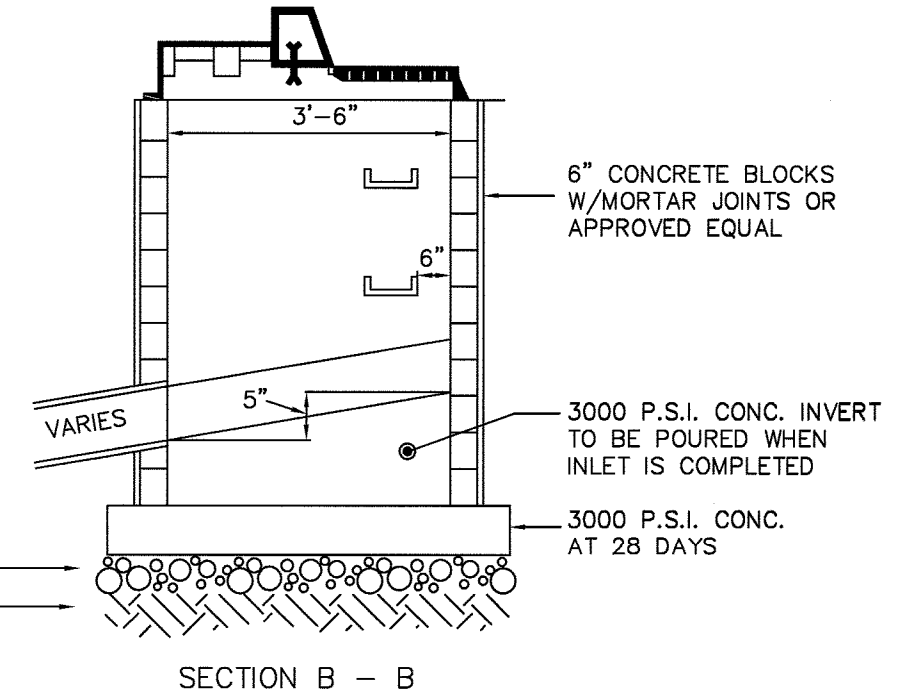
EARTH LINED SWALE



INLET FRAME TO BE CAMPBELL PATERN NO. 2618 BICYCLE GRATE OR APPROVED EQUAL

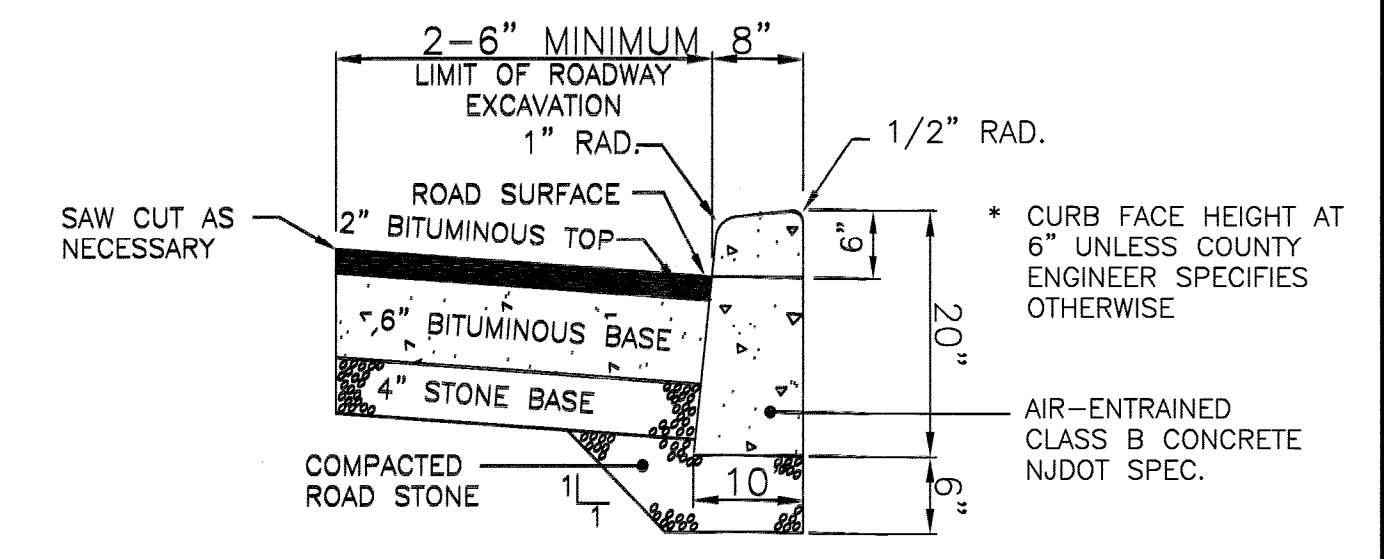


SECTION A - A



SECTION B - B

'B' INLET DETAIL  
NOT TO SCALE



TYPICAL ROADWAY EXCAVATION AT CURBS  
NOT TO SCALE

NOTE: EXPANSION JOINTS TO BE SET AT 10' INCREMENTS

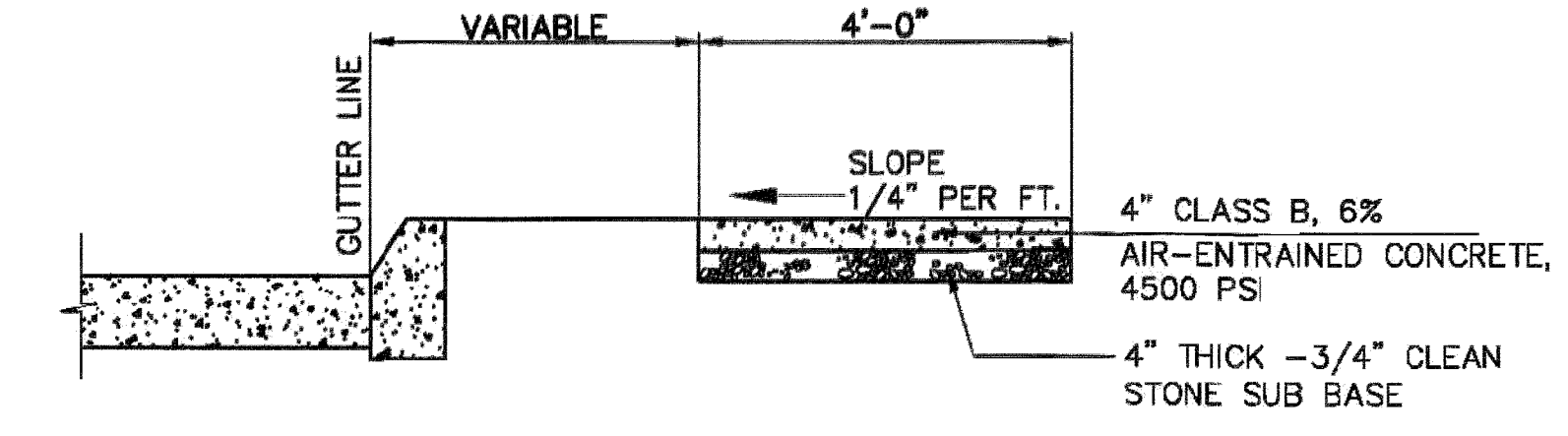
2" BITUMINOUS TOP - NJDOT BITUMINOUS CONCRETE SURFACE COURSE, MIX I-5; FORMERLY NJDOT FA-BC-1

6" BITUMINOUS BASE - NJDOT BITUMINOUS-STABILIZED BASE COURSE, MIX I-2

NOTE: CONSTRUCT IN LAYERS NOT MORE THAN 3" COMPACTED THICKNESS

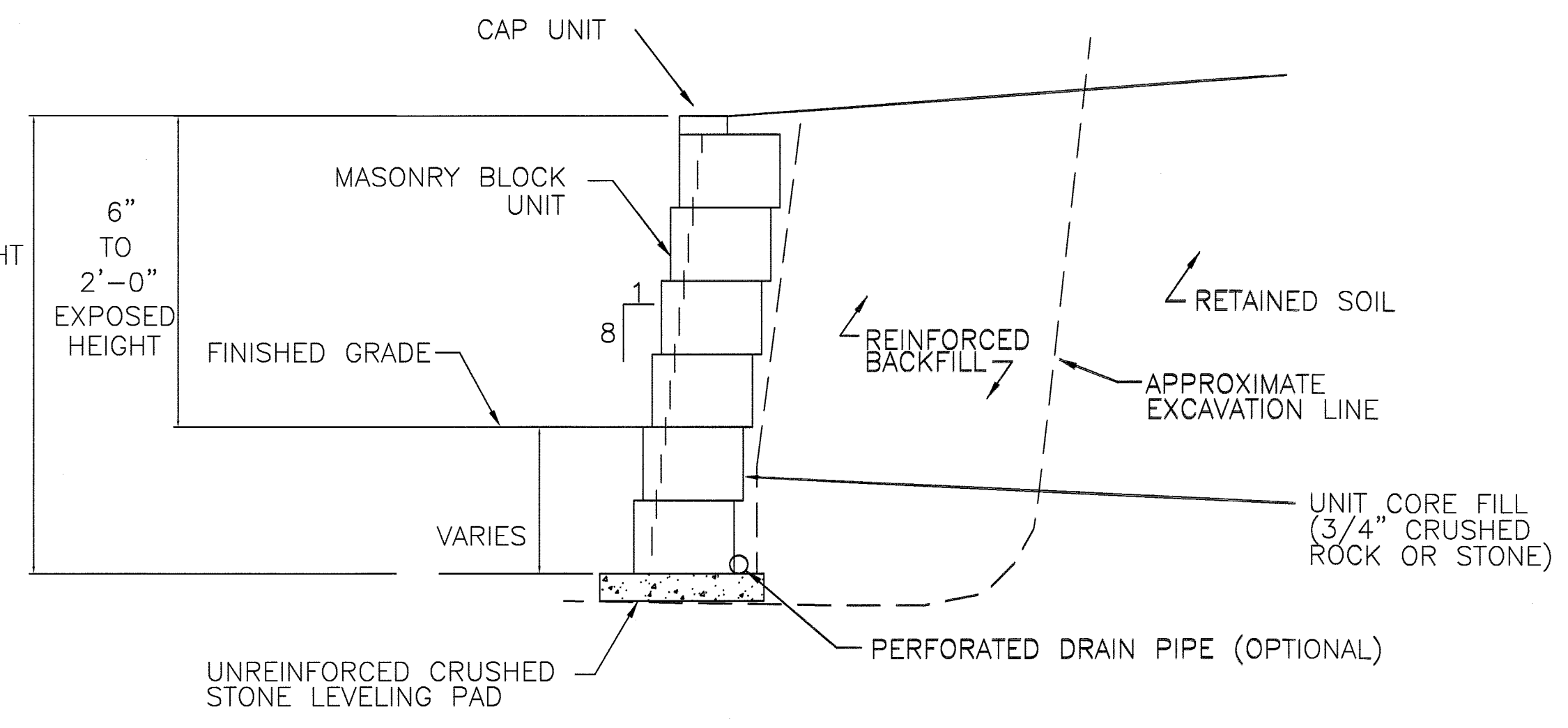
4" STONE BASE - NJDOT DENSE GRADED AGGREGATE BASE COURSE 4" THICK FORMERLY NJDOT QUARRY PROCESSED STONE

ROAD STONE - NJDOT DENSE GRADED AGGREGATE, VARIABLE THICKNESS



CONCRETE SIDEWALK  
N.T.S.

UNION COUNTY R.O.W. DETAILS



TYPICAL SEGMENTAL RETAINING WALL DETAIL

DRAWN BY: SP	CHECKED BY: WGH
JOB No. 14-026	
BOOK	
SCALE N.T.S.	
GRAPHIC SCALE	
DATE APRIL 30, 2021	
REVISIONS	
OCTOBER 20, 2021	
JANUARY 12, 2022	
SEPTEMBER 9, 2022	
SEPTEMBER 30, 2022	
DECEMBER 6, 2022 SIGHT LINE	
CERTIFICATE OF AUTHORIZATION No. 24GA27959700	
NOTES	
<p><b>Murphy &amp; Hollows Associates LLC</b>  <small>CIVIL ENGINEERING AND SURVEYING</small>  <small>331 ELM STREET, STIRLING, NJ 07980</small>  <small>908.580.1255 murphyhollows@gmail.com</small></p>	
<p>FINAL MAJOR SUBDIVISION PLAN          WESTMINSTER PRESBYTERIAN CHURCH          LOT 32 BLOCK 2006          MOUNTAIN AVENUE &amp;          PLAINFIELD AVENUE          TOWNSHIP OF          BERKELEY HEIGHTS          UNION COUNTY          NEW JERSEY          CONSTRUCTION DETAILS</p>	
<p>AIDAN T. MURPHY  <small>N.J. LIC. PROFESSIONAL ENGINEER #21319</small>  <small>N.J. PROFESSIONAL PLANNER #2531</small></p>	
<p><i>William G. Hollows</i>  <b>WILLIAM G. HOLLOWES</b>  <small>N.J. LIC. PROFESSIONAL ENGINEER &amp; LAND SURVEYOR #27473</small>  <small>N.J. PROFESSIONAL PLANNER #2530</small></p>	
FILE LF14-026	SHEET 13 OF 15

N:\CAD Drawings\2014\14-026\SUBDIVISION\FINAL\REV5\14-026DET\FINAL5.dwg, 12/16/2022, 4:52:58 PM