



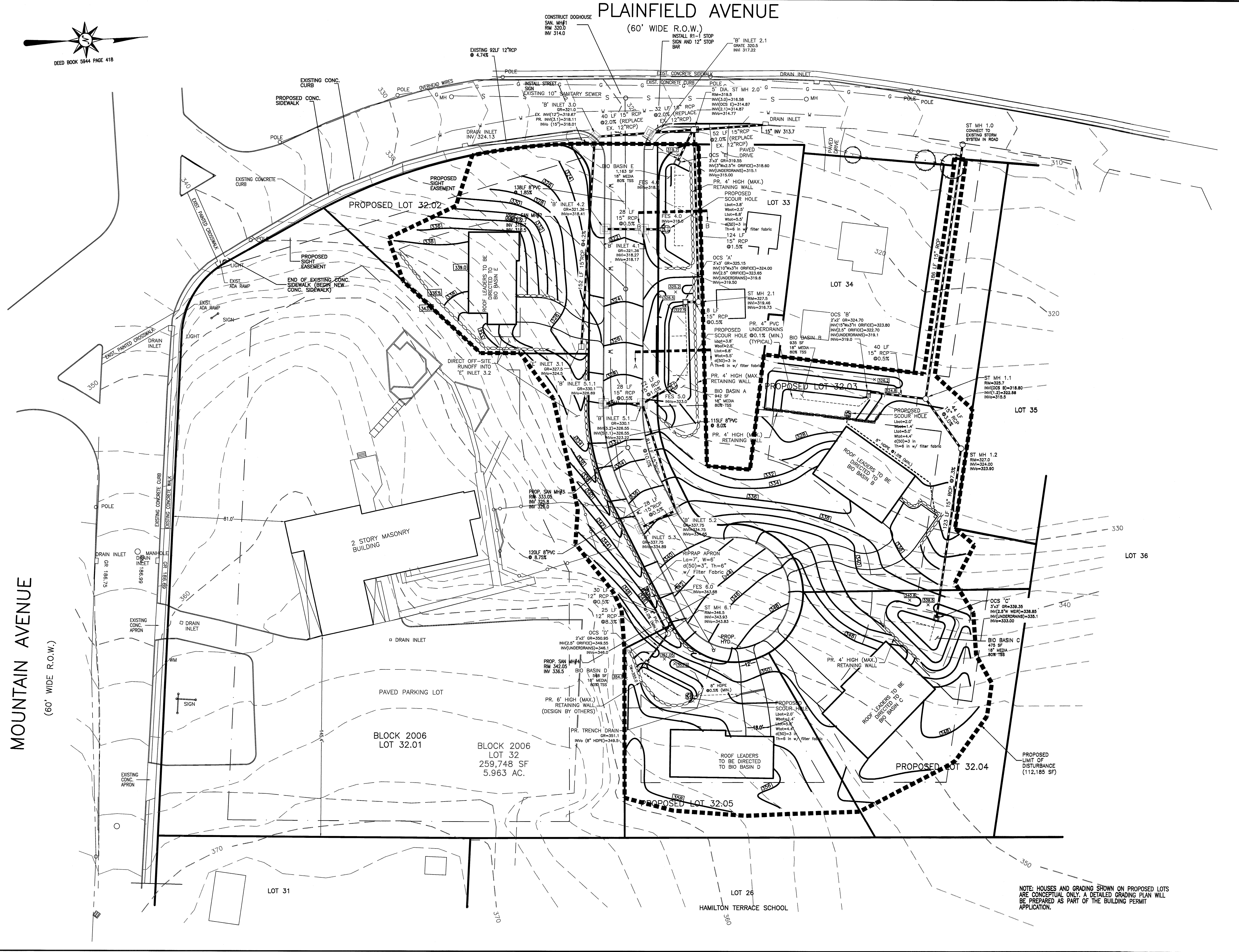
PLAINFIELD AVENUE

(60' WIDE R.O.W.)

MOUNTAIN AVENUE

(60' WIDE R.O.W.)

DRAWN BY:	SP	CHECKED BY:	WGH
JOB No.	14-026		
BOOK			
SCALE	1" = 30'		
DATE	APRIL 30, 2021		
REVISIONS	OCTOBER 20, 2021 JANUARY 12, 2022 SEPTEMBER 9, 2022 SEPTEMBER 30, 2022 DECEMBER 6, 2022 SIGHT LINE		
CERTIFICATE OF AUTHORIZATION	No. 24GA27959700		
NOTES	<p>Murphy & Hollows Associates LLC CIVIL ENGINEERING AND SURVEYING 331 ELM STREET, STIRLING, NJ 07980 908.580.1255 murphyhollows@gmail.com</p> <p>FINAL MAJOR SUBDIVISION PLAN WESTMINSTER PRESBYTERIAN CHURCH LOT 32 BLOCK 2006 MOUNTAIN AVENUE & PLAINFIELD AVENUE TOWNSHIP OF BERKELEY HEIGHTS UNION COUNTY NEW JERSEY UTILITY PLAN</p> <p>AIDAN T. MURPHY N.J. LIC. PROFESSIONAL ENGINEER #21319 N.J. PROFESSIONAL PLANNER #2531</p> <p><i>William G. Hollows</i> WILLIAM G. HOLLOWES N.J. LIC. PROFESSIONAL ENGINEER & LAND SURVEYOR #27473 N.J. PROFESSIONAL PLANNER #2530</p>		
FILE	LF14-026	SHEET	5
		OF	15



NOTE: HOUSES AND GRADING SHOWN ON PROPOSED LOTS ARE CONCEPTUAL ONLY. A DETAILED GRADING PLAN WILL BE PREPARED AS PART OF THE BUILDING PERMIT APPLICATION.