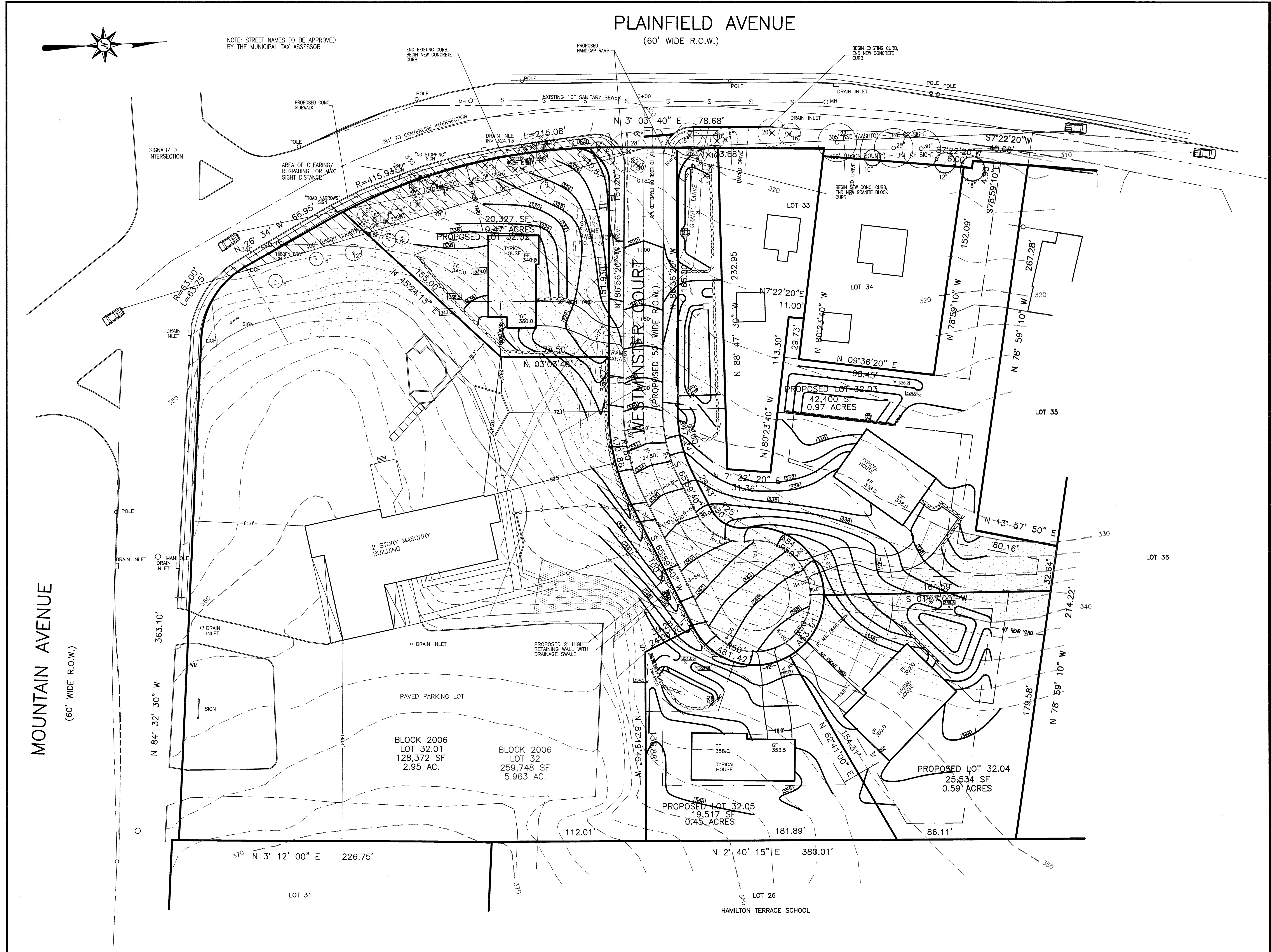


N:\CAD Drawings\2014\14-026\SUBDIVISION\14-026\SIGHT LINE2.dwg, 6/9/2022 1:15:36 PM



PLAINFIELD AVENUE
(60' WIDE R.O.W.)

MOUNTAIN AVENUE
(60' WIDE R.O.W.)

NOTE: STREET NAMES TO BE APPROVED BY THE MUNICIPAL TAX ASSESSOR

DRAWN BY:	SP	CHECKED BY:	WGH
JOB No.	14-026		
BOOK			
SCALE	1" = 30'		
GRAPHIC SCALE			

DATE
OCTOBER 20, 2021

REVISIONS
JUNE 9, 2022

CERTIFICATE OF AUTHORIZATION
No. 240A27959700

NOTES

Murphy & Hollows Associates LLC
CIVIL ENGINEERING AND SURVEYING
 331 ELM STREET, STIRLING, NJ 07980
 908.580.1255 murphyhollows@gmail.com

SUBDIVISION PLAN
 WESTMINSTER PRESBYTERIAN CHURCH
 LOT 32 BLOCK 2006
 MOUNTAIN AVENUE &
 PLAINFIELD AVENUE
 TOWNSHIP OF
 BERKELEY HEIGHTS
 UNION COUNTY
 NEW JERSEY
 SIGHT LINE DISPLAY

AIDAN T. MURPHY
N.J. LIC. PROFESSIONAL ENGINEER #21319
 N.J. PROFESSIONAL PLANNER #2531

William G. Hollows
WILLIAM G. HOLLOWES
N.J. LIC. PROFESSIONAL ENGINEER
 & LAND SURVEYOR #27473
 N.J. PROFESSIONAL PLANNER #2530

FILE	SHEET
LF14-026	1
	OF
	1