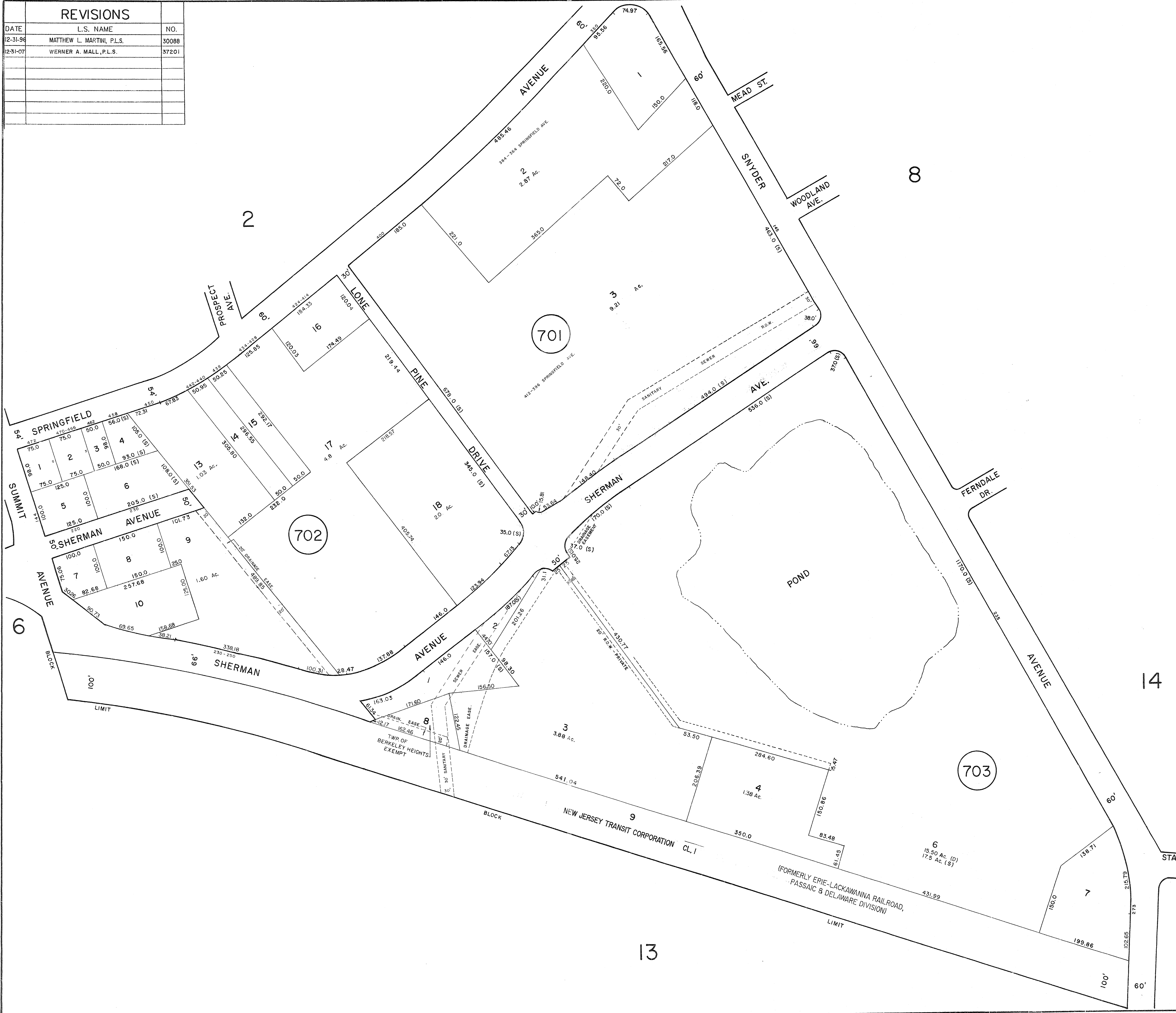


REVISIONS		
DATE	L.S. NAME	NO.
12-31-96	MATTHEW L. MARTINI, P.L.S.	30088
12-31-07	WERNER A. MALL, P.L.S.	37201



NEW JERSEY DEPARTMENT OF THE TREASURY  
 DIVISION OF TAXATION  
 PUBLIC UTILITY TAX BUREAU  
 APPROVED AS A TAX MAP PURSUANT TO THE  
 PROVISIONS OF CHAPTER 124, LAWS OF 1970, ETC.  
 FOR THE DIRECTOR, DIVISION OF TAXATION.  
 BY: *[Signature]* P.L.S.  
 DATE: JUL - 1971 SERIAL No. 503

**TAX MAP**  
 TOWNSHIP OF BERKELEY HEIGHTS  
 UNION COUNTY, NEW JERSEY  
 SCALE: 1"=100'  
 APRIL 1971  
 JAMES P. PURCELL ASSOCIATES  
 EAST ORANGE, NEW JERSEY  
 JOSEPH A. TOMBRO, L.S.