

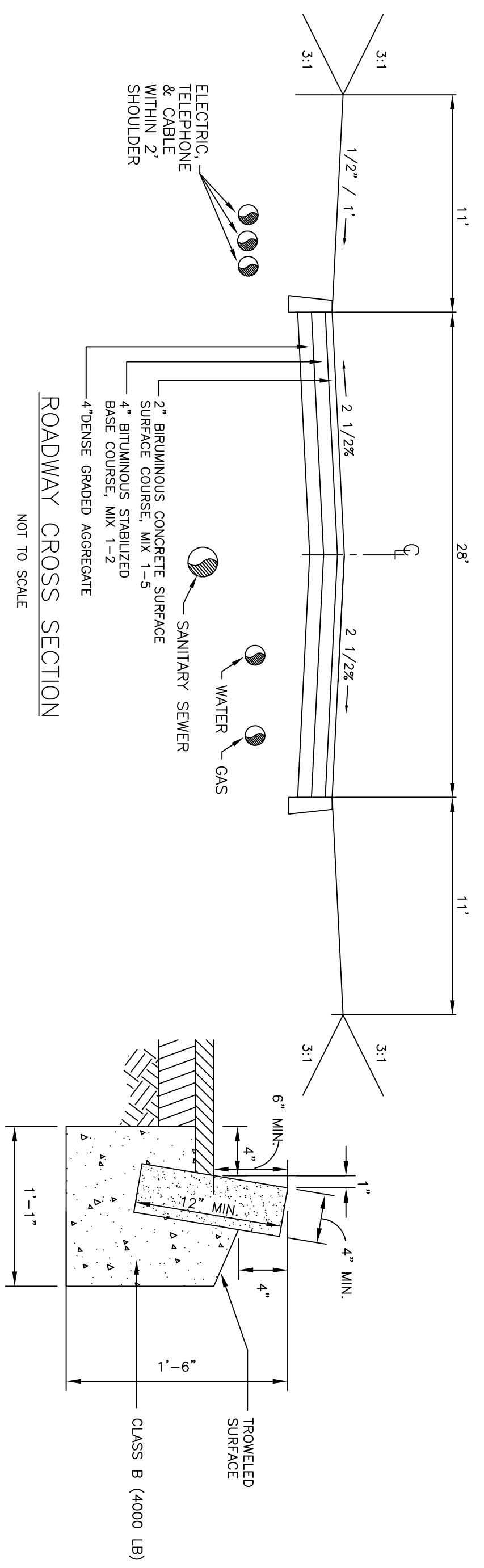
GENERAL NOTES:

1. ALL IMPROVEMENTS UNDER THE JURISDICTION OF THE COUNTY OF UNION ARE TO BE CONSTRUCTED IN ACCORDANCE WITH UNION COUNTY SPECIFICATIONS.
2. THE OFFICE OF THE COUNTY ENGINEER IS TO BE NOTIFIED SEVENTY-TWO (72) HOURS IN ADVANCE OF COMMENCEMENT OF CONSTRUCTION OF ANY IMPROVEMENTS UNDER THE JURISDICTION OF THE COUNTY OF UNION.
3. ALL CONSTRUCTION SHALL BE IN ACCORDANCE WITH THE MOST RECENT N.J. DEPARTMENT OF TRANSPORTATION STANDARD SPECIFICATIONS AND SUPPLEMENTS.
4. ALL CONCRETE SHALL HAVE A MINIMUM OF 28 DAY COMPRESSIVE STRENGTH OF 3000 PSI. ALLOWABLE EXTREME FIBER STRESS IN COMPRESSION SHALL BE 1,200 PSI.
5. ALL CONCRETE SHALL BE CLASS "B" AIR ENTRAINED, EXCEPT CAST-IN-PLACE BOX CULVERTS AND BRIDGE DECKS WHICH SHALL BE CLASS "A".
6. ALL REINFORCING STEEL SHALL BE INTERMEDIATE GRADE, NEW DEFORMED BILLET-STEEL CONFORMING TO ASTM A615 (LATEST EDITION), GRADE 60 MINIMUM. ALLOWABLE STRESS IN TENSION SHALL BE 20,000 PSI.

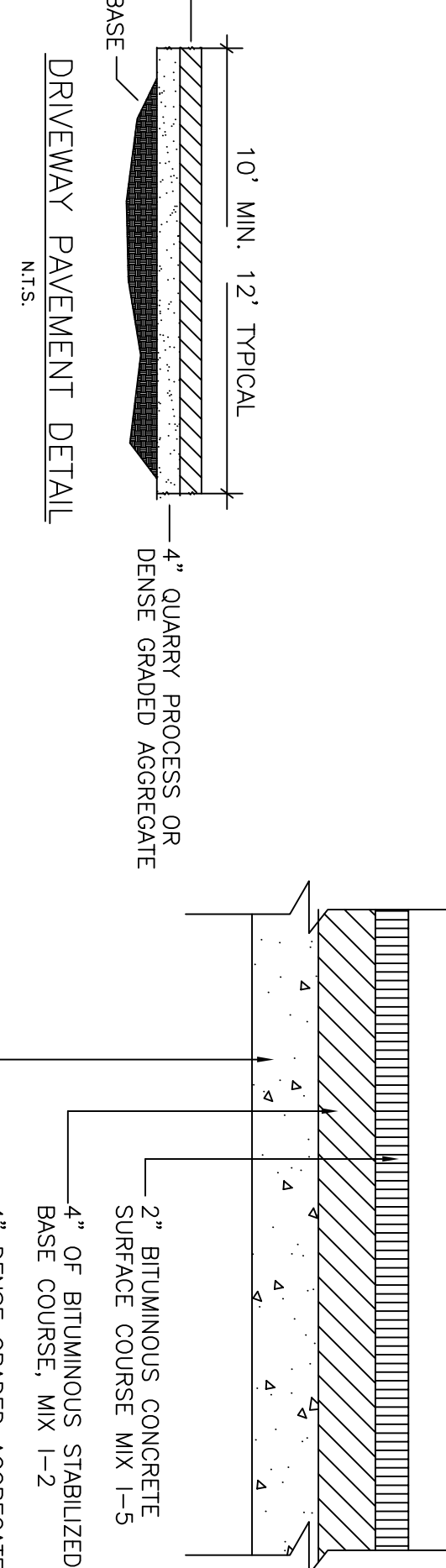
OR

7. ALL CONCRETE SHALL BE PLACED ON FIRM UNDISTURBED SOIL OR CLEAN ROCK.
8. ALL EXPOSED CONCRETE EDGES SHALL HAVE A 1 INCH, 45 DEGREE CHAMFER UNLESS OTHERWISE NOTED.
9. ALL REINFORCEMENT STEEL SPLICES SHALL BE A MINIMUM 30 BAR DIAMETERS UNLESS OTHERWISE NOTED.
10. ALL REINFORCEMENT SHALL BE SUITABLY SUPPORTED AND SECURELY HELD IN PLACE WHILE PLACING CONCRETE.
11. CONCRETE PLACING OPERATIONS SHALL NOT COMMENCE UNTIL FINAL INSPECTION AND APPROVAL OF ALL REINFORCEMENT HAS BEEN PERFORMED.

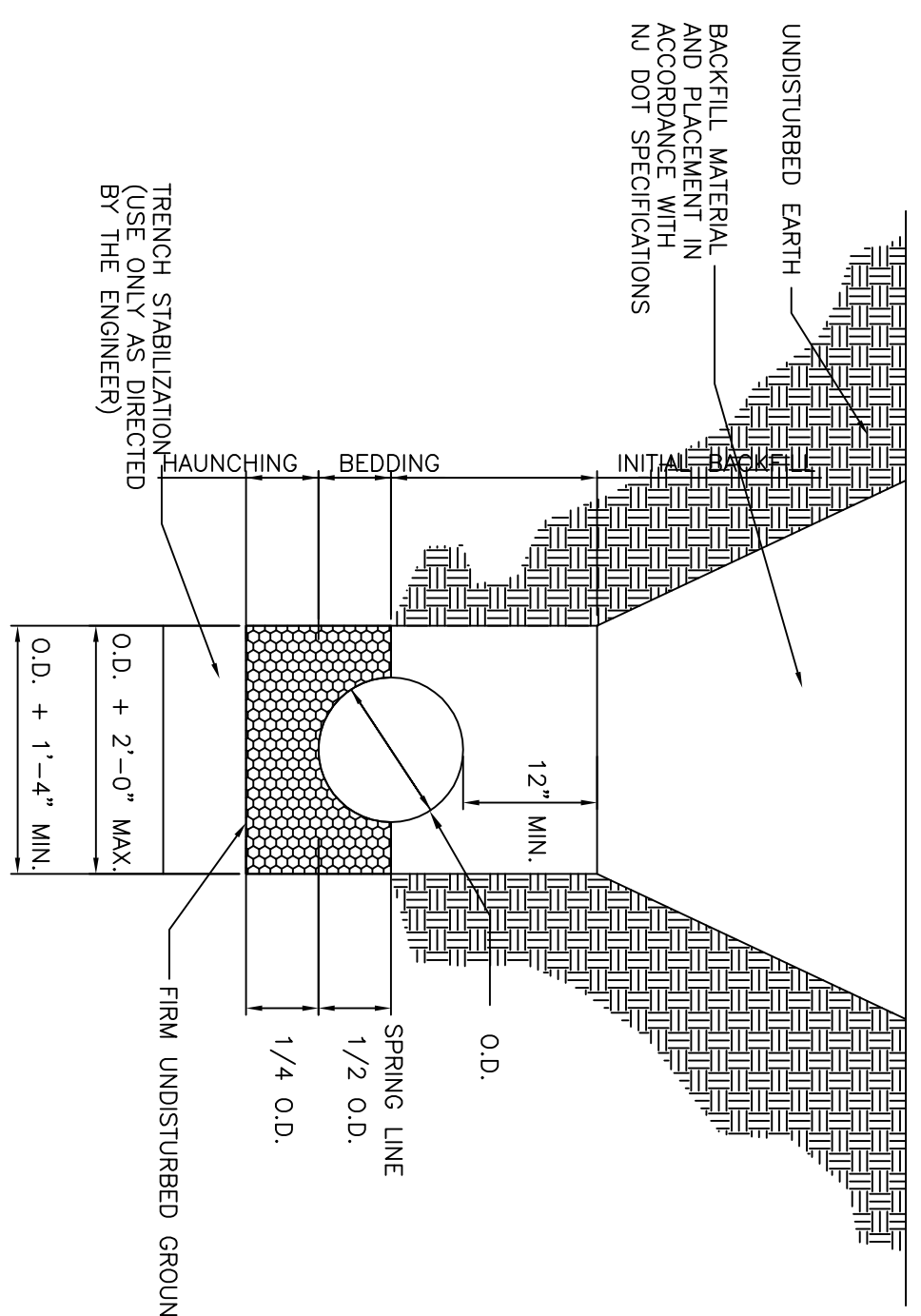
12. ALL PIPES, STUBS AND/OR FITTINGS ARE TO BE MONOLITHICALLY CAST IN THE CONCRETE.
13. THE SURFACE OF ALUMINUM PLATES AND FITTINGS IN CONTACT WITH CONCRETE SHALL BE PAINTED WITH A HEAVY COAT OF ALUMINUM PIGMENTED ALKALINE RESISTANT BITUMINOUS PAINT EQUAL TO MILITARY SPECIFICATION MIL-P-68833.
14. THE OUTLET PIPE FOR DETENTION BASINS SHALL BE REINFORCED CONCRETE PIPE CONFORMING TO ASTM C 76 WITH RUBBER GASKETS PURSUANT TO ASTM C 443.
15. THE BASIN IS TO BE SODDED OR TOPSOILED AND SEEDED, INCLUDING THE BOTTOM, SIDE SLOPES, AND ALL EMBANKMENTS.
16. THE DESIGN DIMENSIONS OF THE DETENTION BASIN SHALL BE MAINTAINED THROUGHOUT CONSTRUCTION UNLESS IT IS TO BE USED AS A SIMILATION BASIN DURING CONSTRUCTION IN THE WATERSHED. IF SO, IT SHALL BE IMMEDIATELY RETURNED TO DESIGN DIMENSIONS FOLLOWING THE COMPLETION OF SUCH CONSTRUCTION.



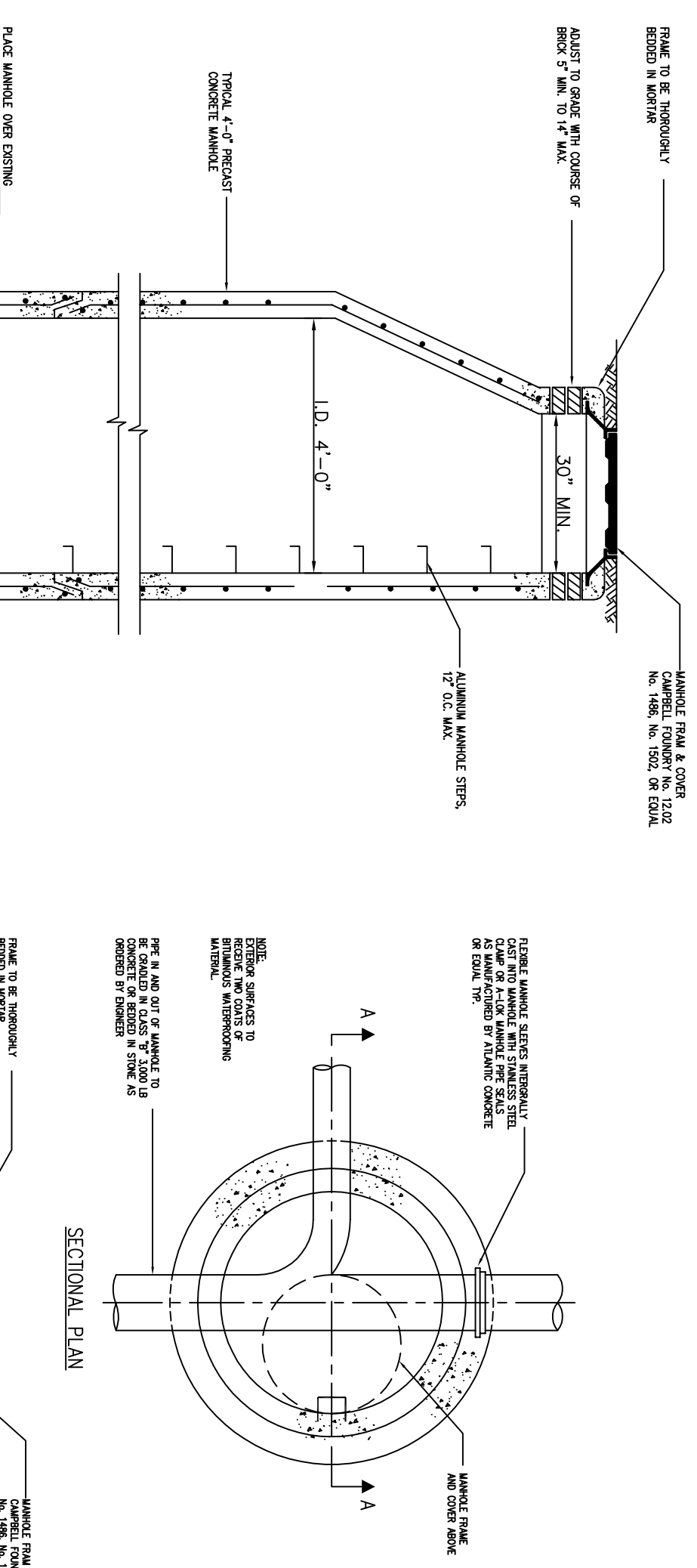
TYPICAL BLOCK CURB
N.T.S.



PAVEMENT DETAIL
NOT TO SCALE

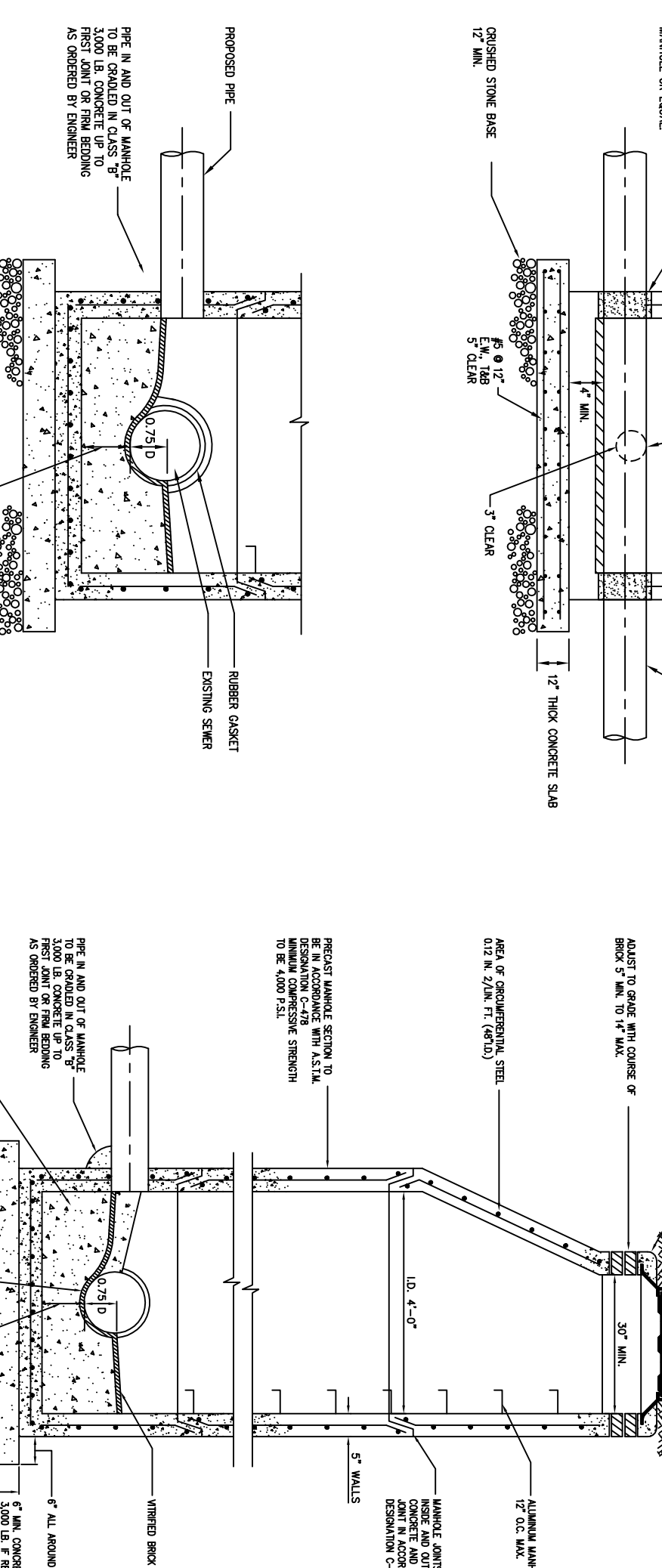


SDR - 35 PVC SANITARY SEWER TRENCH DETAIL



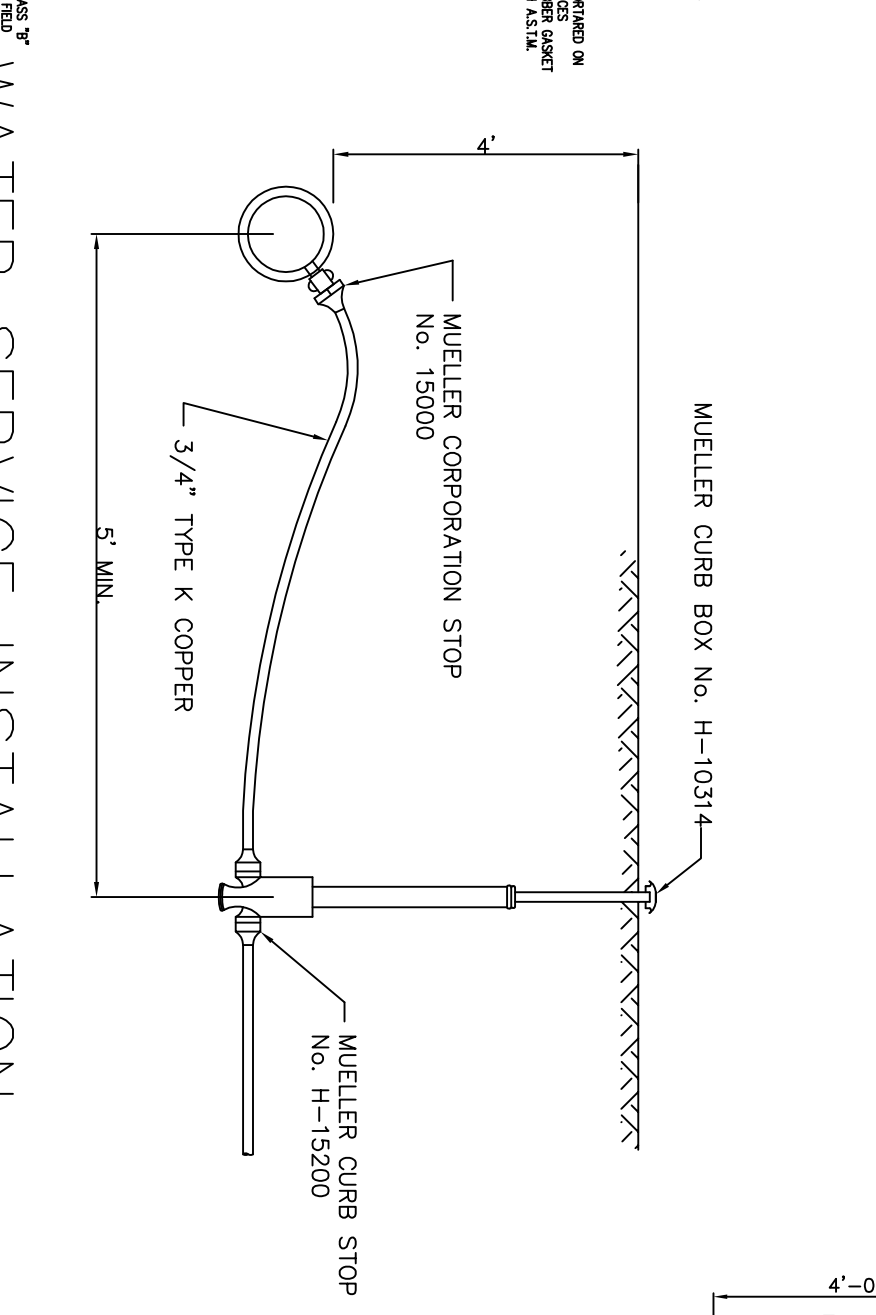
SECTIONAL PLAN

SECTIONAL A-A

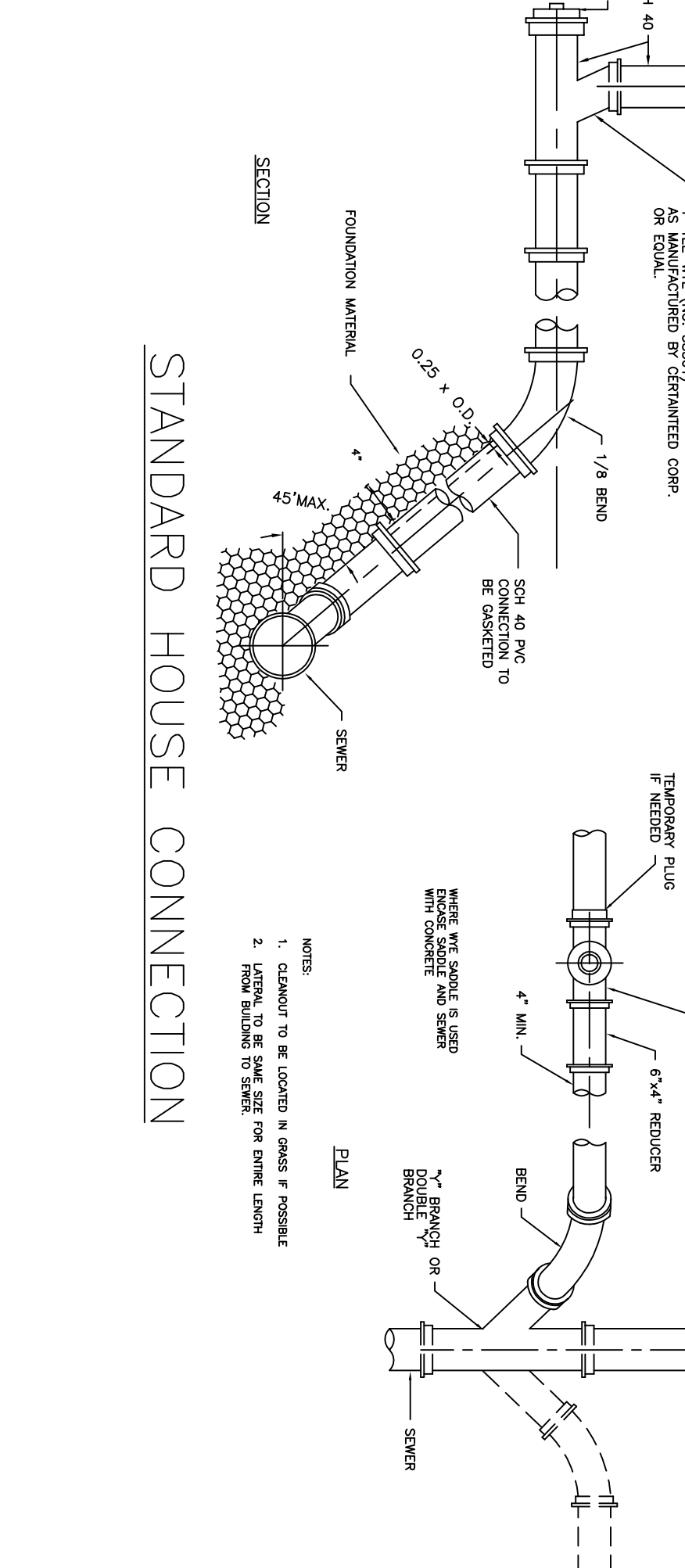


DOORHOUSE MANHOLE DETAIL

STANDARD MANHOLE DETAIL



WATER SERVICE INSTALLATION



STANDARD HOUSE CONNECTION

| | | | |
|-----------|--------------------------------------|-------------|-----|
| DRAWN BY: | SP | CHECKED BY: | WGH |
| JOB NO. | 14-026 | | |
| BOOK | | | |
| SCALE | N.T.S. | | |
| DATE | APRIL 30, 2021 | | |
| REVISIONS | OCTOBER 20, 2021 JANUARY 12, 2022 | | |

CERTIFICATE OF AUTHORIZATION
No. 24662/959700

Murphy & Hollows Associates LLC
CIVIL ENGINEERING AND SURVEYING
331 ELM STREET, STIRLING, NJ 07980
908.580.2525 MURPHY@MURPHYHOLLOW.COM

FINAL MAJOR SUBDIVISION PLAN
WESTMINSTER PRESBYTERIAN CHURCH
LOT 32 BLOCK 2006
MOUNTAIN AVENUE &
PLAINFIELD AVENUE
TOWNSHIP OF
BERKELEY HEIGHTS
UNION COUNTY
NEW JERSEY
CONSTRUCTION DETAILS

AIDAN T. MURPHY
N.J. L.C. PROFESSIONAL ENGINEER #213119
N.J. L.C. PROFESSIONAL PLANNER #2531

WILLIAM G. HOLLOWES
N.J. L.C. PROFESSIONAL ENGINEER #27473
& LAND SURVEYOR #27473
N.J. L.C. PROFESSIONAL PLANNER #2530

FILE LF14-026 SHEET 10 OF 13