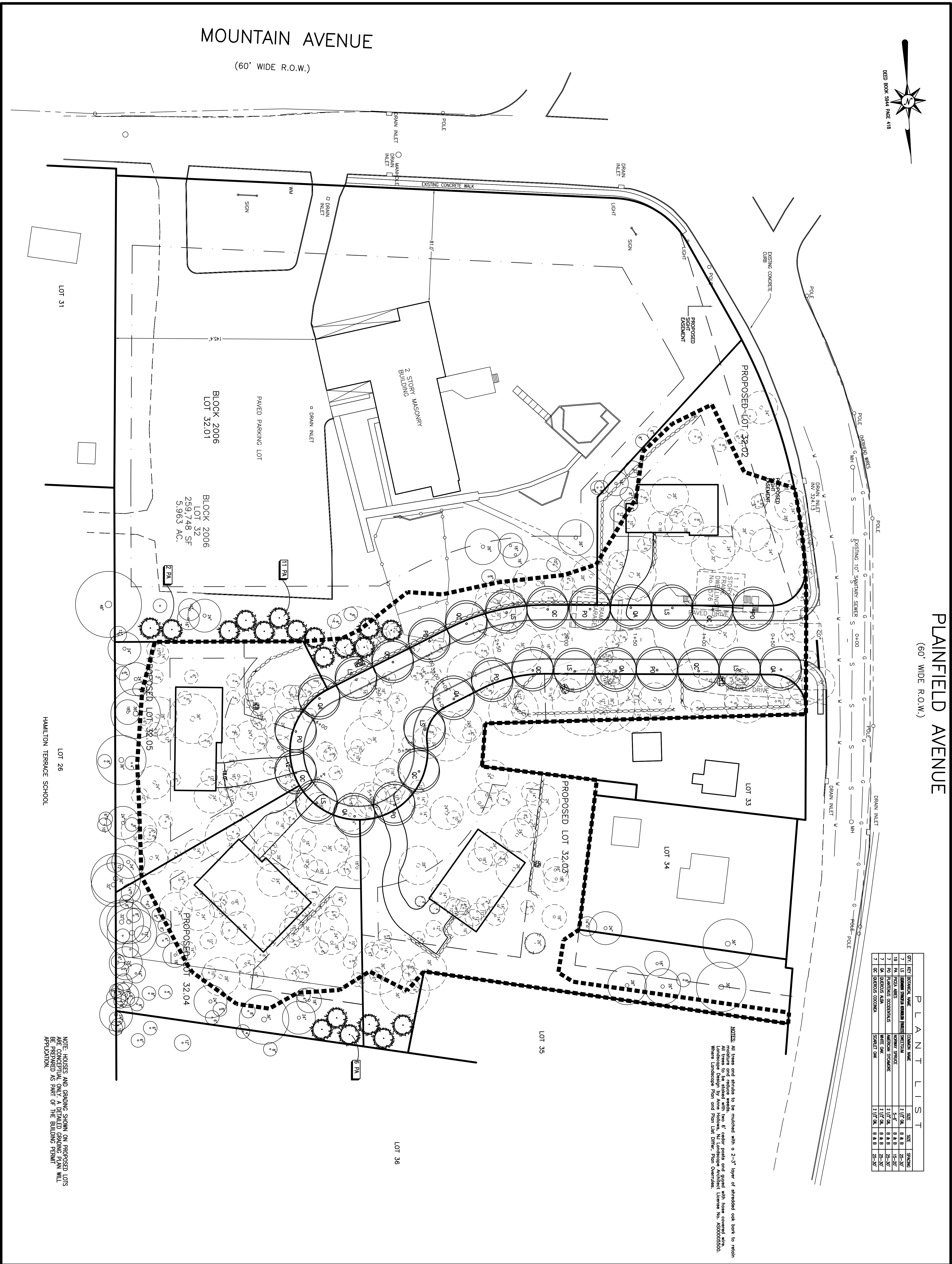


MOUNTAIN AVENUE

(60' WIDE R.O.W.)

PLAINFIELD AVENUE

(60' WIDE R.O.W.)



P L A N T L I S T				
QTY	REMARKS	WIDE	DEPTH	SPACING
17	RED BIRCH	12"	18"	25'-30'
18	PA. REDBARK	12"	18"	25'-30'
19	PA. REDBARK	12"	18"	25'-30'
7	PA. PLANTAIN	12"	18"	25'-30'
7	PA. PLANTAIN	12"	18"	25'-30'
7	DC. QUERCUS	12"	18"	25'-30'
7	DC. QUERCUS	12"	18"	25'-30'

NOTES: All trees and shrubs to be mulched with a 2"-3" layer of shredded oak bark to retain moisture and reduce weeds. Top of cedar posts and vinyl fence covered with landscape fabric. All trees and shrubs to be planted in accordance with the Landscape Plan and Plant List. Plant Overlays: Where Landscape Plan and Plant List Differ, Plant Overlays.

NOTE: HARGES AND GRADING SHOWN ON PROPOSED LOTS BE PREPARED AS PART OF THE BUILDING PERMIT APPLICATION.

DRAWN BY: SP	CHECKED BY: WGH
JOB NO. 14-026	
BOOK	
SCALE 1" = 30'	
GRAPHIC SCALE	
DATE APRIL 30, 2021	
REVISIONS OCTOBER 20, 2021	
JANUARY 12, 2022	

CERTIFICATE OF AUTHORIZATION
No. 246627959700

Murphy & Hollows Associates LLC
CIVIL ENGINEERING AND SURVEYING
331 ELM STREET, STIRLING, NJ 07980
908.380.1250 MURPHY@MURPHYHOLLOW.COM

FINAL MAJOR SUBDIVISION PLAN
WESTMINSTER PRESBYTERIAN CHURCH
LOT 32 BLOCK 2006
MOUNTAIN AVENUE &
PLAINFIELD AVENUE
TOWNSHIP OF
BERKELEY HEIGHTS
UNION COUNTY
NEW JERSEY
TREE PLAN

AIDAN T. MURPHY
N.J. LIC. PROFESSIONAL SURVEYOR #21319
N.J. PROFESSIONAL PLANNER #2531

WILLIAM G. HOLLOWES
N.J. LIC. PROFESSIONAL ENGINEER #27473
& LAND SURVEYOR #27473
N.J. PROFESSIONAL PLANNER #2530

FILE LF14-026	SHEET 9
	OF 13