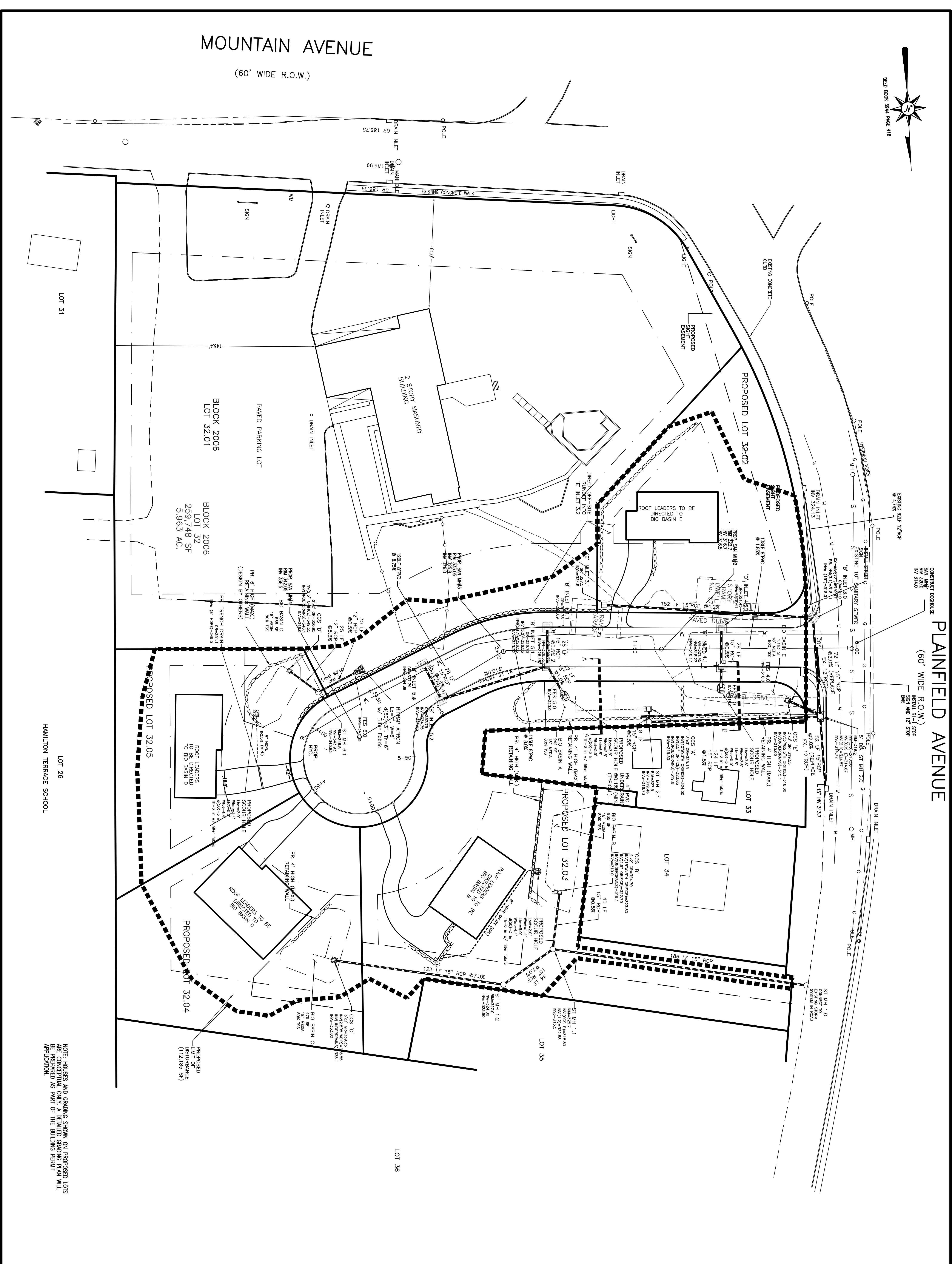
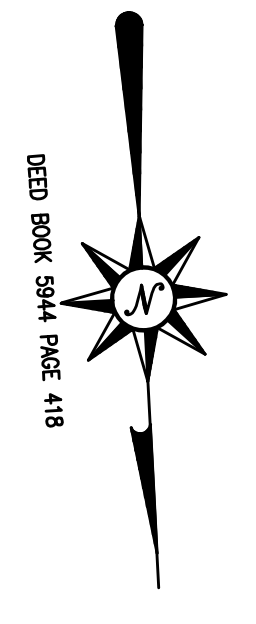


# MOUNTAIN AVENUE

(60' WIDE R.O.W.)



# PLAINFIELD AVENUE

(60' WIDE R.O.W.)

CONSTRUCT DOORHOUSE  
 FINISH R-1 STOP  
 SIGN AND 12\"/>

NOTE: LINES AND GRADING SHOWN ON PROPOSED LOTS  
 ARE FOR INFORMATION ONLY. FINAL GRADING SHALL  
 BE PREPARED AS PART OF THE BUILDING PERMIT  
 APPLICATION.

<p>DRAWN BY: SP                  CHECKED BY: WGH</p>	<p>JOB NO.: 14-026</p>	<p>DATE: APRIL 30, 2021</p>	<p>REVISIONS:                  OCTOBER 20, 2021                  JANUARY 12, 2022</p>	<p>SCALE: 1" = 30'</p>	<p>CERTIFICATE OF AUTHORIZATION                  No. 246627959700</p>	<p>MURPHY &amp; HOLLOWES Associates LLC                  CIVIL ENGINEERING AND SURVEYING                  608-350-2255 MURPHY@MURPHYHOLLOWES.COM</p>	<p>FINAL MAJOR SUBDIVISION PLAN                  WESTMINSTER PRESBYTERIAN CHURCH                  LOT 32 BLOCK 2006                  MOUNTAIN AVENUE &amp;                  PLAINFIELD AVENUE                  TOWNSHIP OF                  BERKELEY HEIGHTS                  UNION COUNTY                  NEW JERSEY                  UTILITY PLAN</p>	<p>WILLIAM G. HOLLOWES                  N.J. L.C. PROFESSIONAL ENGINEER #27473                  &amp; LAND SURVEYOR #27473                  N.J. PROFESSIONAL PLANNER #2530</p>	<p>AIDAN T. MURPHY                  N.J. L.C. PROFESSIONAL ENGINEER #27179                  N.J. PROFESSIONAL PLANNER #2531</p>	<p>FILE: LF14-026                  SHEET: 5 OF 13</p>
--	------------------------	-----------------------------	---	------------------------	---	--	--	---	---	---