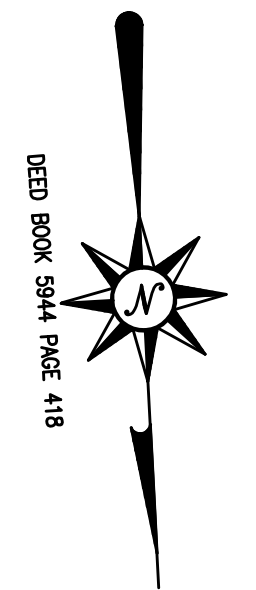


MOUNTAIN AVENUE

(60' WIDE R.O.W.)

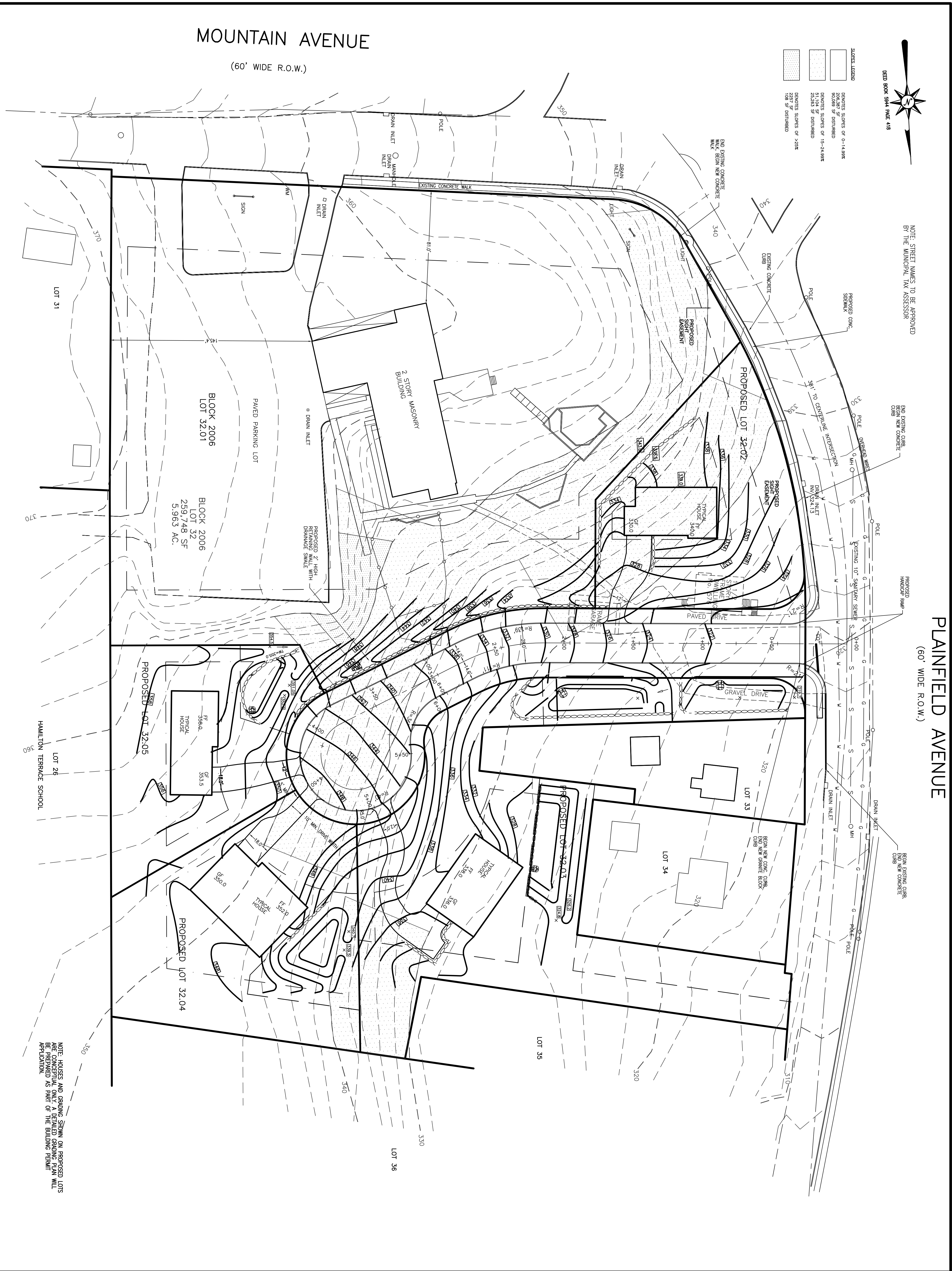


- SLOPE LEGEND**
- DENOTES SLOPES OF 0-14.9%
20.0% OF DISTURBED
 - DENOTES SLOPES OF 15-24.9%
25.0% OF DISTURBED
 - DENOTES SLOPES OF >25%
15% OF DISTURBED

NOTE: STREET NAMES TO BE APPROVED BY THE MUNICIPAL TAX ASSESSOR

PLAINFIELD AVENUE

(60' WIDE R.O.W.)



NOTE: HARGES AND GRADING SHOWN ON PROPOSED LOTS BE PREPARED AS PART OF THE BUILDING PERMIT APPLICATION.

DRAWN BY: SP	CHECKED BY: WGH	JOB NO. 14-026	BOOK	SCALE 1" = 30'	DATE APRIL 30, 2021	REVISIONS OCTOBER 20 2021 JANUARY 12, 2022	<p>CERTIFICATE OF AUTHORIZATION No. 246627959700</p> <p>NOTES ELEVATIONS ARE BASED ON NAD 83 DATUM</p>	<p>GRAPHIC SCALE</p>
<p>Murphy & Hollows Associates LLC CIVIL ENGINEERING AND SURVEYING 008 350.7.253 MURPHY@MURPHYANDHOLLOW.COM</p>		<p>FINAL MAJOR SUBDIVISION PLAN WESTMINSTER PRESBYTERIAN CHURCH LOT 32 BLOCK 2006 MOUNTAIN AVENUE & PLAINFIELD AVENUE TOWNSHIP OF BERKELEY HEIGHTS UNION COUNTY NEW JERSEY GRADING PLAN</p>			<p>AIDAN T. MURPHY N.J. L.P. PROFESSIONAL ENGINEER #271319 N.J. PROFESSIONAL PLANNER #2531</p>		<p>WILLIAM G. HOLLOWES N.J. L.P. PROFESSIONAL ENGINEER #27473 & LAND SURVEYOR #2350 N.J. PROFESSIONAL PLANNER #2530</p>	
FILE	LF14-026	SHEET	4	OF	13			