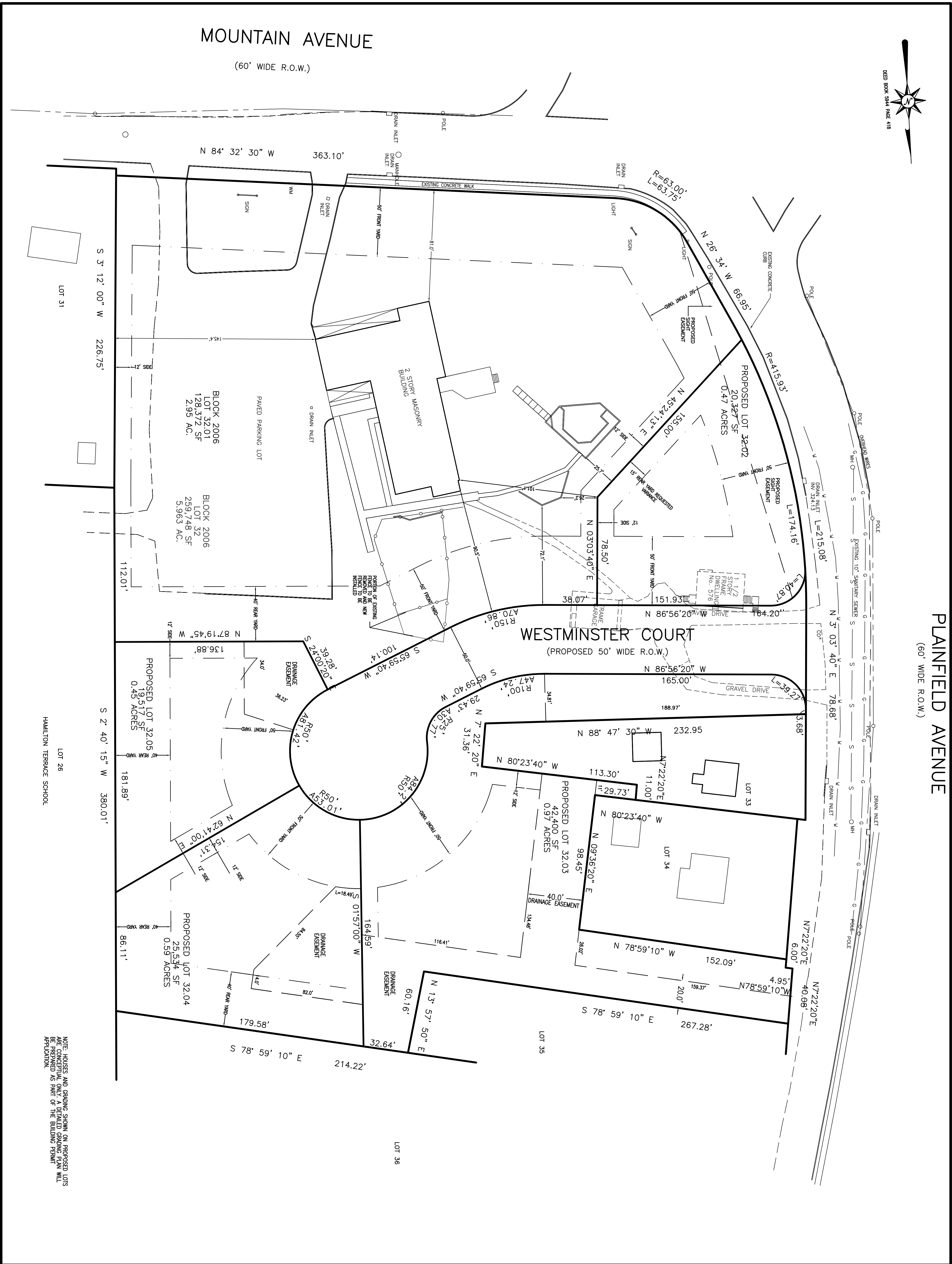


# MOUNTAIN AVENUE

(60' WIDE R.O.W.)

# PLAINFIELD AVENUE

(60' WIDE R.O.W.)



NOTE: LINES AND SHADING SHOWN ON PROPOSED LOTS ARE FOR ILLUSTRATION PURPOSES ONLY AND SHALL BE PREPARED AS PART OF THE BUILDING PERMIT APPLICATION.

DRAWN BY: SP	CHECKED BY: WGH
JOB NO. 14-026	
BOOK	
SCALE 1" = 30'	
DATE APRIL 30, 2021	
REVISIONS OCTOBER 20, 2021 JANUARY 12, 2022	

CERTIFICATE OF AUTHORIZATION  
No. 246627959700

NOTES

**Murphy & Hollows Associates LLC**  
CIVIL ENGINEERING AND SURVEYING  
331 ELM STREET, STIRLING, NJ 07980  
609.380.2255 MURPHY@MURPHYHOLLOW.COM

FINAL MAJOR SUBDIVISION PLAN  
WESTMINSTER PRESBYTERIAN CHURCH  
LOT 32 BLOCK 2006  
MOUNTAIN AVENUE &  
PLAINFIELD AVENUE  
TOWNSHIP OF  
BERKELEY HEIGHTS  
UNION COUNTY  
NEW JERSEY  
LAYOUT PLAN

**AIDAN T. MURPHY**  
N.J. L.E. PROFESSIONAL ENGINEER #21319  
N.J. PROFESSIONAL PLANNER #2531

**WILLIAM G. HOLLOWES**  
N.J. L.E. PROFESSIONAL ENGINEER #27473  
& LAND SURVEYOR #27473  
N.J. PROFESSIONAL PLANNER #2530

FILE LF14-026 SHEET 3 OF 13