

DEED BOOK 5494  
PAGE 418

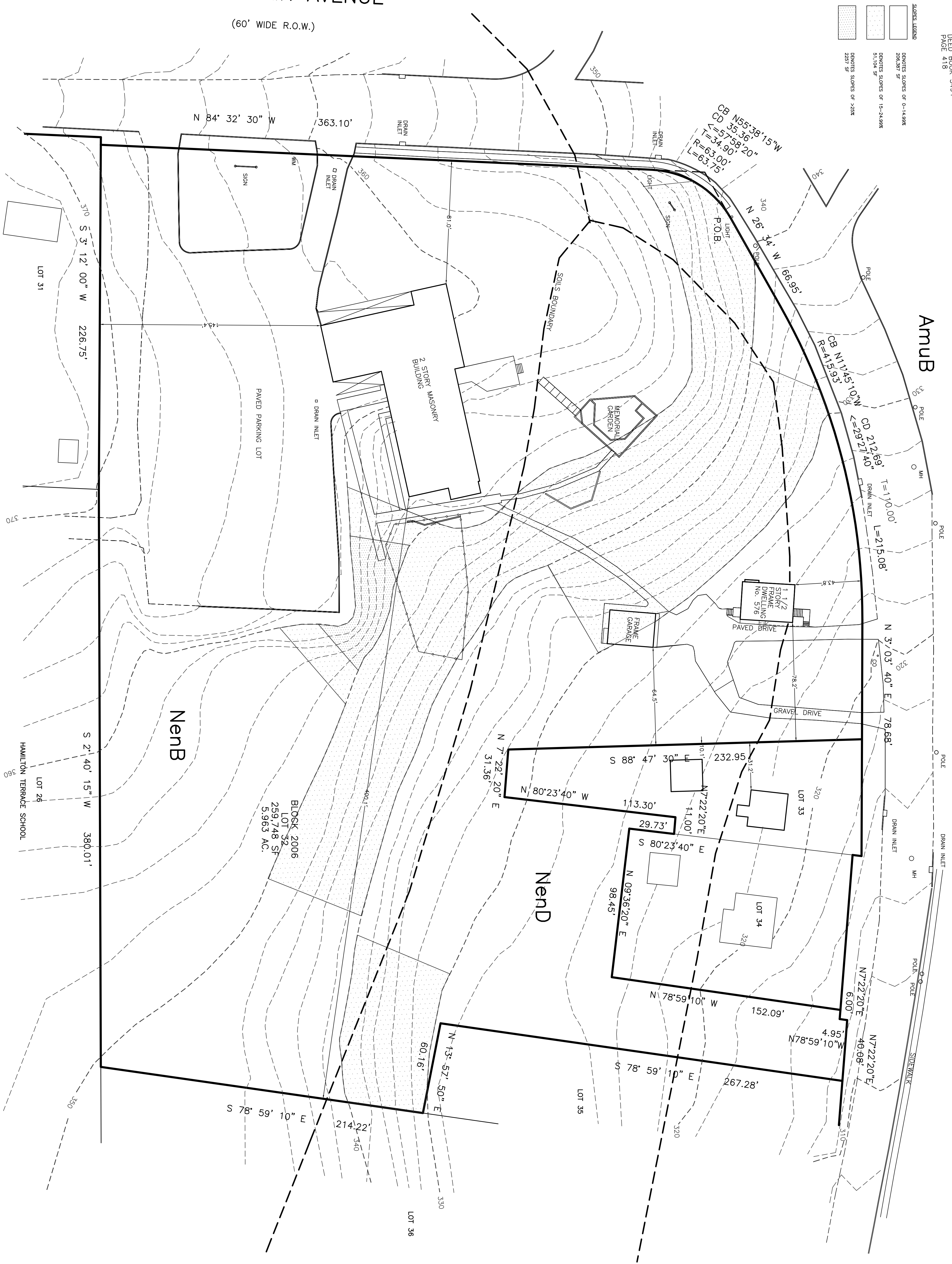
- SLOPE LEGEND**
- DENOTES SLOPES OF 0-14.99%
  - DENOTES SLOPES OF 15-24.99%
  - DENOTES SLOPES OF 25-29.99%
  - DENOTES SLOPES OF >30%

# MOUNTAIN AVENUE

(60' WIDE R.O.W.)

# PLAINFIELD AVENUE

(60' WIDE R.O.W.)  
ALSO KNOWN AS COUNTY ROUTE NO. 622



DRAWN BY: SP  
CHECKED BY: WGH  
JOB NO.: 14-026  
BOOK:  
SCALE: 1" = 30'  
DATE: APRIL 30, 2021  
REVISIONS:  
OCTOBER 20 2021  
JANUARY 12, 2022

CERTIFICATE OF AUTHORIZATION  
No. 246627959700

**Murphy & Hollows Associates LLC**  
CIVIL ENGINEERING AND SURVEYING  
908 331 ELM STREET, SPRING, NJ 07980  
908 350 1255 MURPHY@MURPHYHOLLOW.COM

**Murphy & Hollows Associates LLC**  
CIVIL ENGINEERING AND SURVEYING  
908 331 ELM STREET, SPRING, NJ 07980  
908 350 1255 MURPHY@MURPHYHOLLOW.COM

FINAL MAJOR SUBDIVISION PLAN  
WESTMINSTER PRESBYTERIAN CHURCH  
LOT 32 BLOCK 2006  
MOUNTAIN AVENUE &  
PLAINFIELD AVENUE  
TOWNSHIP OF  
BERKELEY HEIGHTS  
UNION COUNTY  
NEW JERSEY  
EXISTING CONDITIONS

**AIDAN T. MURPHY**  
N.J. L.S. PROFESSIONAL SURVEYOR #21319  
N.J. PROFESSIONAL PLANNER #2531

**WILLIAM G. HOLLOWES**  
N.J. L.C. PROFESSIONAL ENGINEER & LAND SURVEYOR #27473  
N.J. PROFESSIONAL PLANNER #2530

FILE	LF14-026	SHEET	2
		OF	13