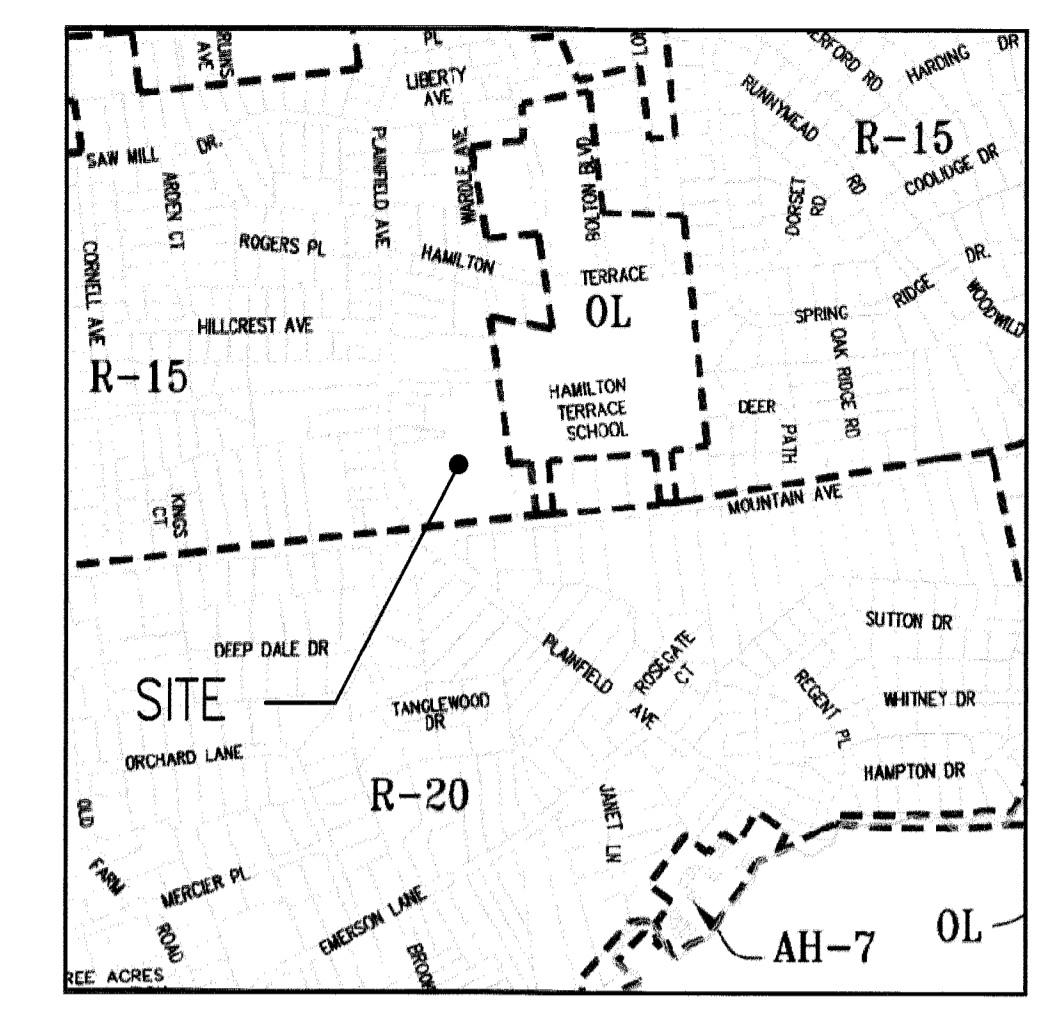


PLAINFIELD AVENUE

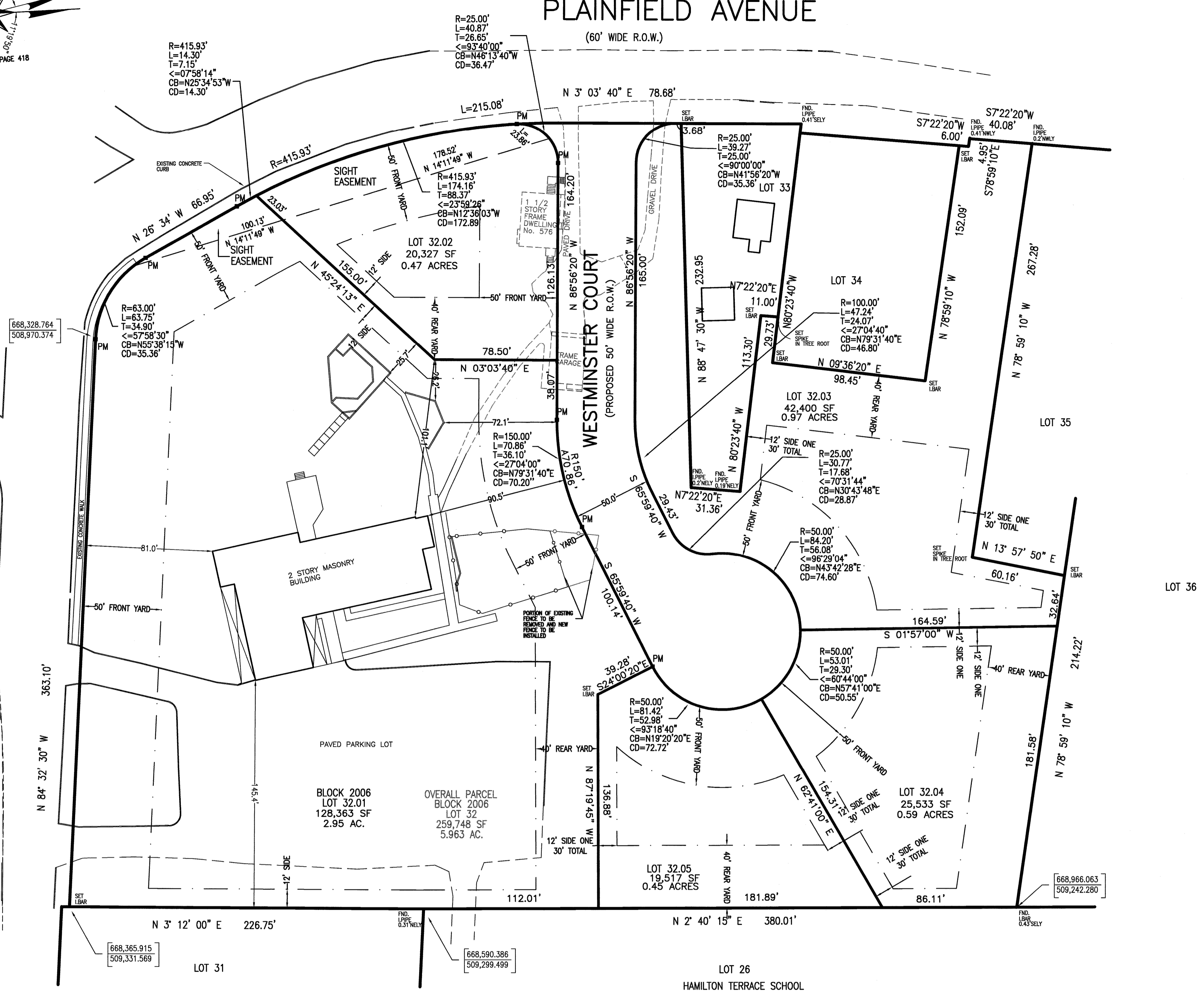
(60' WIDE R.O.W.)

MOUNTAIN AVENUE

(60' WIDE R.O.W.)



KEY MAP



DRAWN BY: SP CHECKED BY: WGH

JOB No. 14-026

BOOK

SCALE 1" = 40'



GRAPHIC SCALE

DATE AUGUST 10, 2021

REVISIONS

CERTIFICATE OF AUTHORIZATION No. 24GAZ7959700

NOTES

Murphy & Hollows Associates LLC
 CIVIL ENGINEERING AND SURVEYING
 192 CENTRAL AVENUE, STIRLING, NJ 07980
 908.580.1255 murphyhollows@gmail.com

FINAL MAP FOR WESTMINSTER PRESBYTERIAN CHURCH
 LOT 32 BLOCK 2006 MOUNTAIN AVENUE & PLAINFIELD AVENUE
 TOWNSHIP OF BERKELEY HEIGHTS UNION COUNTY NEW JERSEY

AIDAN T. MURPHY
 N.J. LIC. PROFESSIONAL ENGINEER #21319
 1973-2016

William G. Hollows
WILLIAM G. HOLLOWES
 N.J. LIC. PROFESSIONAL ENGINEER & LAND SURVEYOR #27473
 N.J. PROFESSIONAL PLANNER #2530

FILE	SHEET
LF14-026	1
	OF
	1

PLANNING BOARD

WE HEREBY CERTIFY THAT THIS MAP COMPLIES WITH THE PROVISIONS OF CHAPTER N. 141 P.L. 1960 AND FURTHER CERTIFY THAT IT HAS BEEN APPROVED FOR FILING IN THE OFFICE OF THE REGISTER OF UNION COUNTY BY THE PLANNING BOARD OF THE TOWNSHIP OF BERKELEY HEIGHTS. THIS CERTIFICATION SHALL EXPIRE IF THIS MAP IS NOT PROPERLY FILED WITH SAID COUNTY CLERK ON OR BEFORE:

DATE _____

APPROVAL

APPROVED BY THE PLANNING BOARD OF THE TOWNSHIP OF BERKELEY HEIGHTS, UNION COUNTY, NEW JERSEY.

CHAIRMAN _____ DATE _____
 SECRETARY _____ DATE _____

BOROUGH CLERK

I HEREBY CERTIFY THAT A BOND HAS BEEN GIVEN TO THE MUNICIPALITY GUARANTEEING THE IMPROVEMENTS REQUIRED FOR THIS SUBDIVISION.

TOWNSHIP CLERK _____ DATE _____

OWNERS CONSENT

I HEREBY CONSENT TO THE FILING OF THIS MAP IN THE OFFICE OF THE COUNTY REGISTER OF UNION COUNTY.

OWNER _____ DATE _____

SURVEYORS CERTIFICATION

I HEREBY CERTIFY THAT TO THE BEST OF MY KNOWLEDGE AND BELIEF THIS MAP AND LAND SURVEY DATED NOVEMBER 23, 2020 MEETS THE MINIMUM SURVEY DETAIL REQUIREMENTS, WITH OUTBOUND CORNERS MARKED AS PROMULGATED BY THE STATE BOARD OF PROFESSIONAL ENGINEERS AND LAND SURVEYORS AND HAS BEEN MADE UNDER MY SUPERVISION, AND COMPLIES WITH THE PROVISIONS OF "THE MAP FILING LAW" AND THAT THE OUTBOUND CORNER MARKERS AS SHOWN HAVE BEEN FOUND OR SET. I DO FURTHER CERTIFY THAT THE MONUMENT AS DESIGNATED AND SHOWN HEREON HAS BEEN SET.

WILLIAM G. HOLLOWES
 NEW JERSEY PROFESSIONAL ENGINEER & LAND SURVEYOR
 LICENSE No. GB27473

TOWNSHIP ENGINEER

I HAVE CAREFULLY EXAMINED THIS MAP AND FIND THAT IT CONFORMS WITH THE PROVISIONS OF "THE MAP FILING LAW" AND THE MUNICIPAL ORDINANCES AND REQUIREMENTS APPLICABLE THERETO.

TOWNSHIP ENGINEER _____ DATE _____

LEGEND

- PM DENOTES MONUMENT TO BE SET
- #33 DENOTES HOUSE NUMBER
- [...] DENOTES NJ STATE PLANE BEARING/COORDINATE

N:\CAD Drawings\2014\14-026\SUBDIVISION\FINAL\14-026FINAL MAP.dwg, 8/11/2021 2:58:55 PM