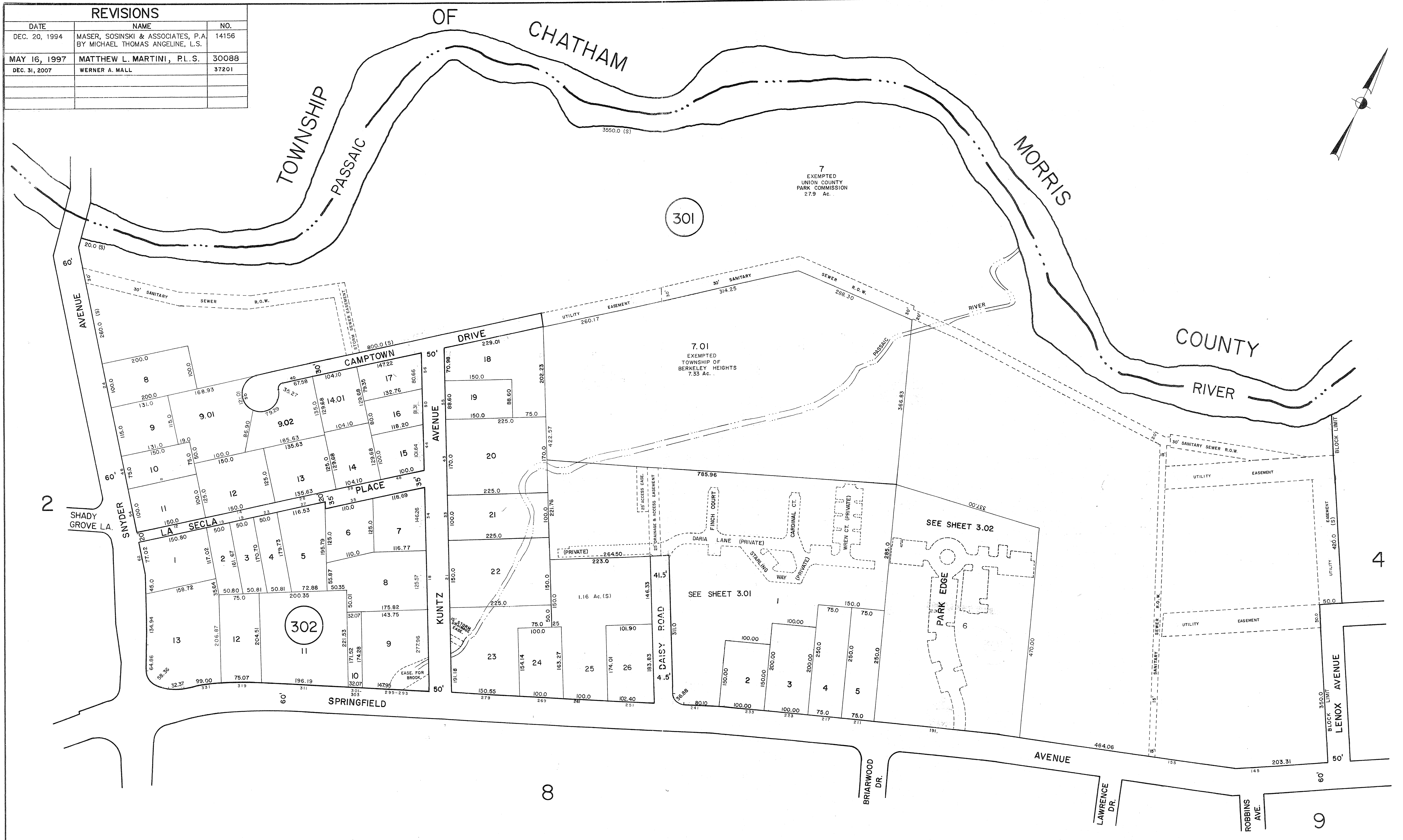


REVISIONS		
DATE	NAME	NO.
DEC. 20, 1994	MASER, SOSINSKI & ASSOCIATES, P.A. BY MICHAEL THOMAS ANGELENE, L.S.	14156
MAY 16, 1997	MATTHEW L. MARTINI, P.L.S.	30088
DEC. 31, 2007	WERNER A. MALL	37201



TAX MAP
 TOWNSHIP OF BERKELEY HEIGHTS
 UNION COUNTY, NEW JERSEY
 SCALE: 1" = 100'
 APRIL 1971
 JAMES P. PURCELL ASSOCIATES
 EAST ORANGE, NEW JERSEY
 JOSEPH A. TOMBRO, L.S.

NEW JERSEY DEPARTMENT OF THE TREASURY
 DIVISION OF TAXATION
 PUBLIC UTILITY TAX BUREAU
 APPROVED AS A TAX MAP PURSUANT TO THE
 PROVISIONS OF CHAPTER 125, LAWS OF 1913, AND
 FOR THE DIRECTOR, DIVISION OF TAXATION.
J. H. [Signature]
 L.L.C. 0-0000
 DATE: JUL - 1 1971 SERIAL No. 503