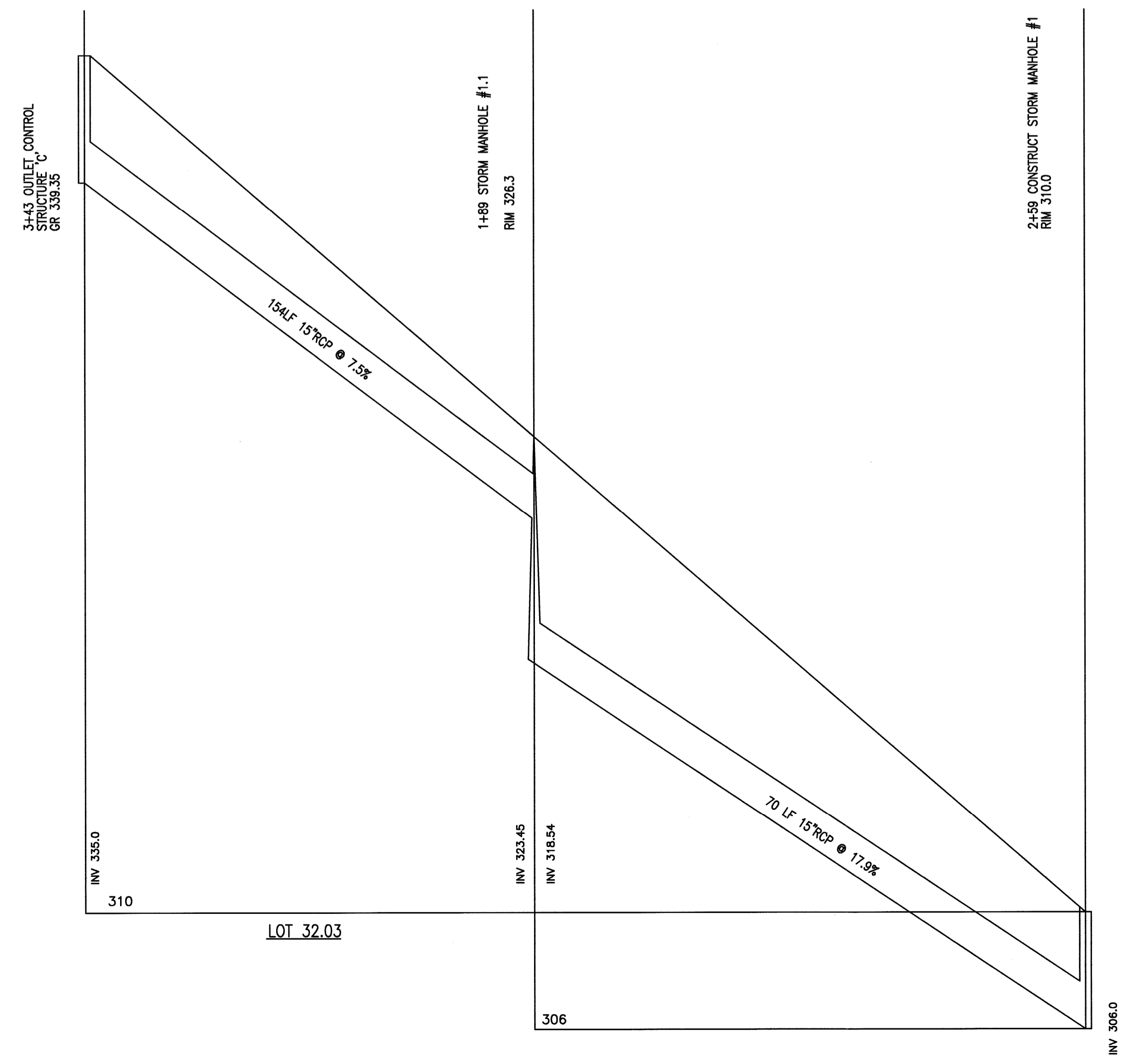
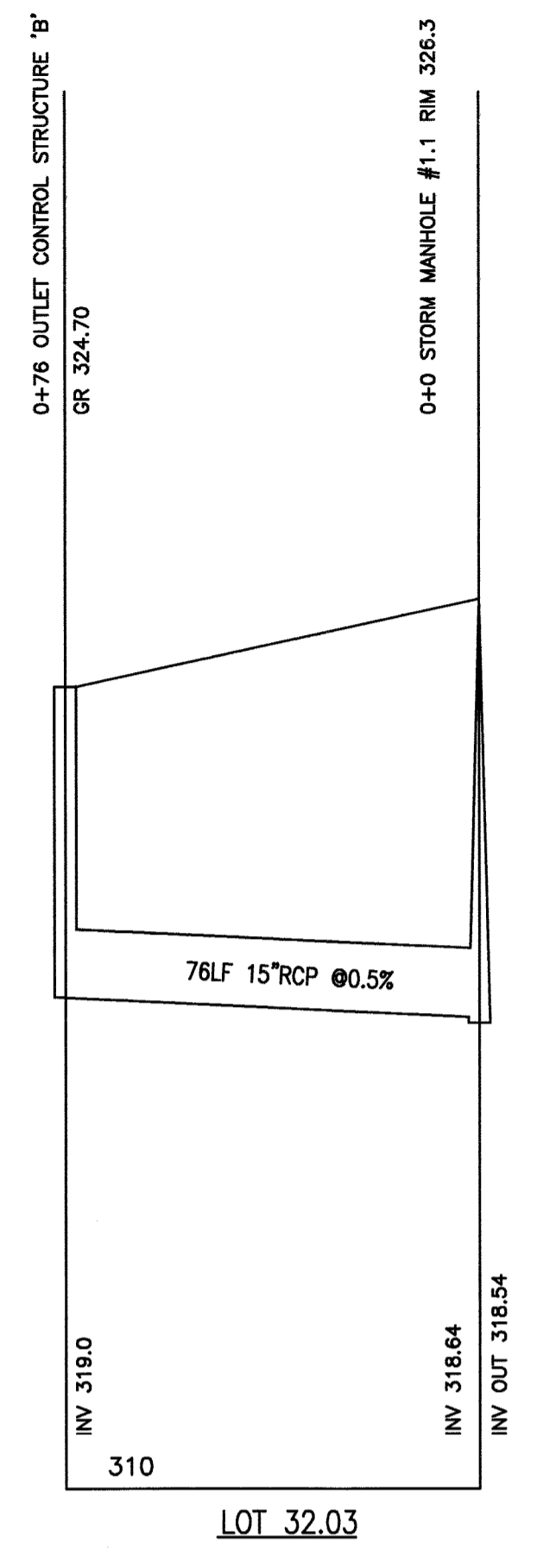
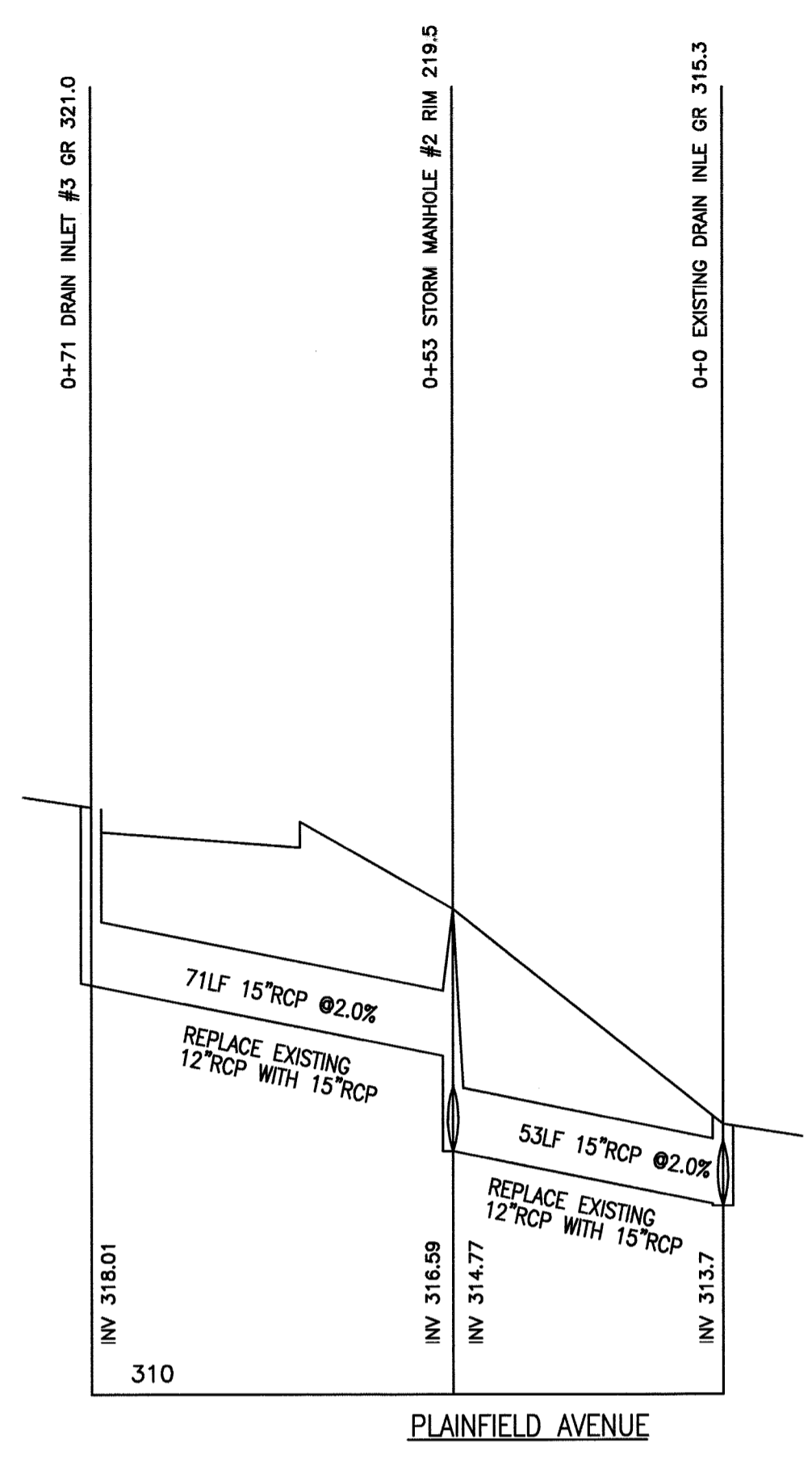


N:\CAD Drawings\2014\14-026\SUBDIVISION\FINAL\REV1\14-026SUBFINAL1.dwg, 10/20/2021 2:16:41 PM



DRAWN BY: SP CHECKED BY: WGH

JOB No. 14-026

BOOK

SCALE 1" = 30'



GRAPHIC SCALE

DATE APRIL 30, 2021

REVISIONS OCTOBER 20 2021

CERTIFICATE OF AUTHORIZATION No. 24GA27959700

NOTES

Murphy & Hollows Associates LLC
 CIVIL ENGINEERING AND SURVEYING
 331 ELM STREET, STIRLING, NJ 07980
 908.580.1255 murphyhollows@gmail.com

FINAL MAJOR SUBDIVISION PLAN
 WESTMINSTER PRESBYTERIAN CHURCH
 LOT 32 BLOCK 2006
 MOUNTAIN AVENUE &
 PLAINFIELD AVENUE
 TOWNSHIP OF
 BERKELEY HEIGHTS
 UNION COUNTY
 NEW JERSEY
 CONSTRUCTION PROFILE

AIDAN T. MURPHY
 N.J. LIC. PROFESSIONAL ENGINEER #21319
 N.J. PROFESSIONAL PLANNER #2531

William G. Hollows
WILLIAM G. HOLLOWES
 N.J. LIC. PROFESSIONAL ENGINEER
 & LAND SURVEYOR #27473
 N.J. PROFESSIONAL PLANNER #2530

FILE LF14-026 SHEET 8 OF 13