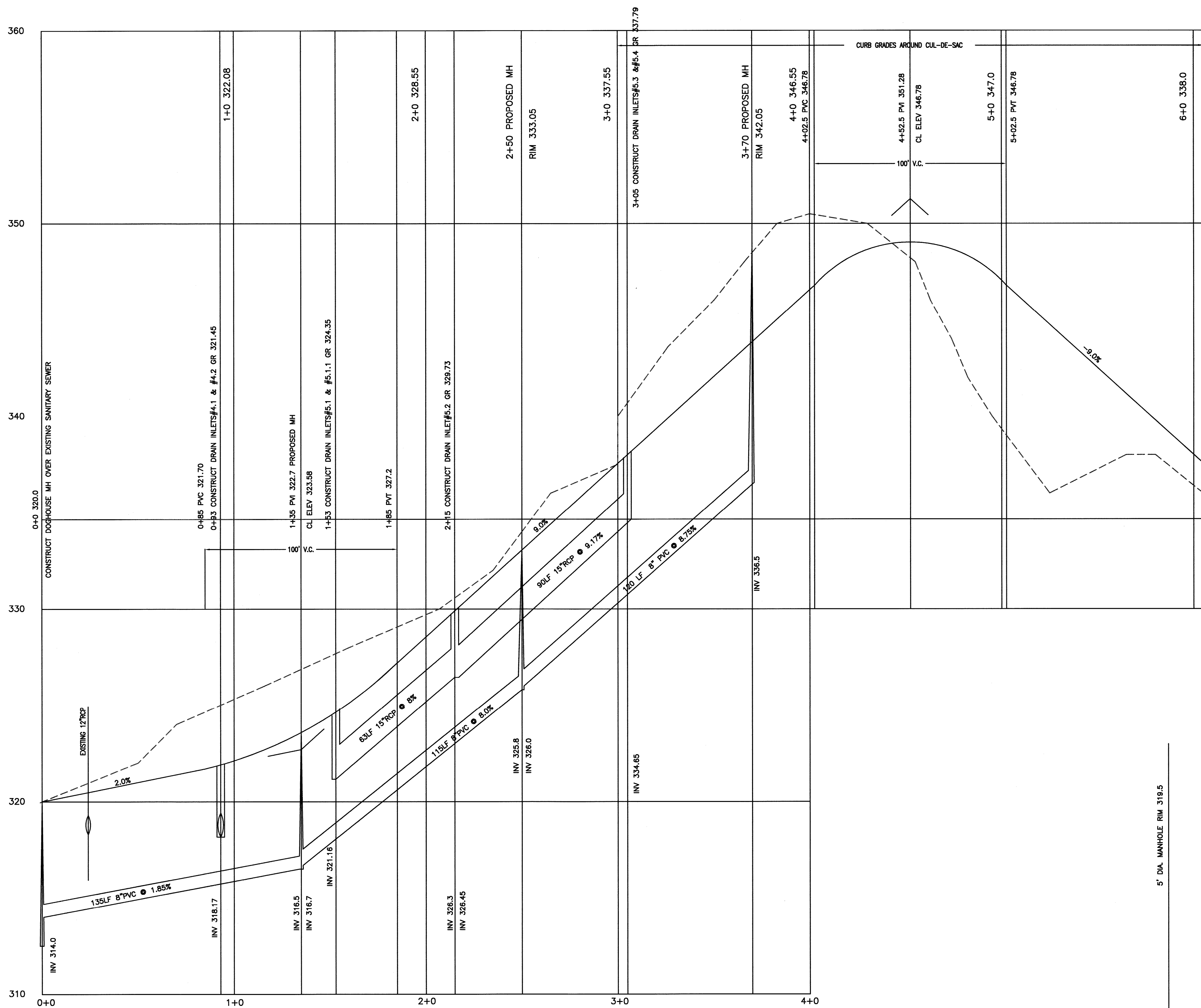
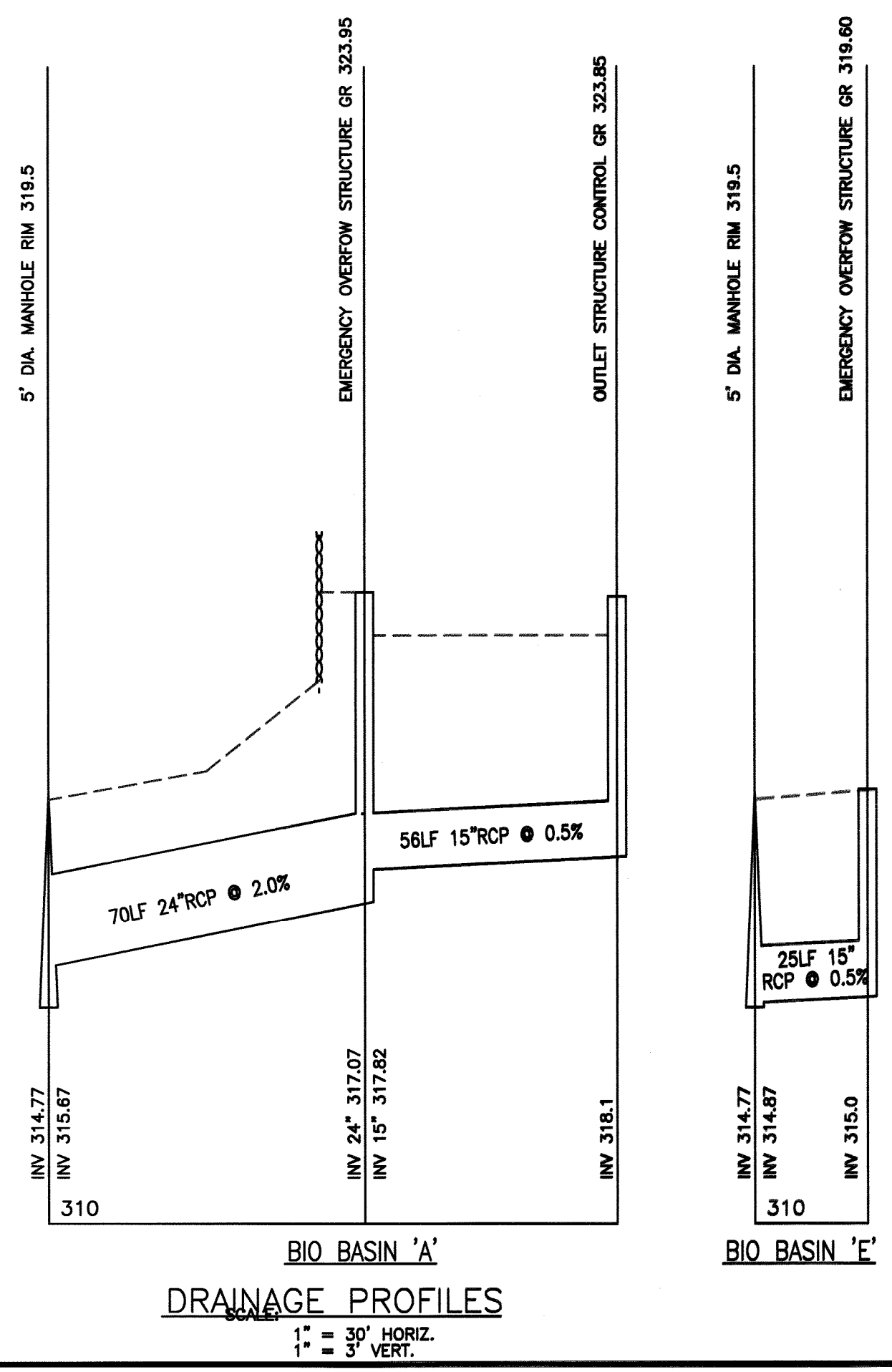
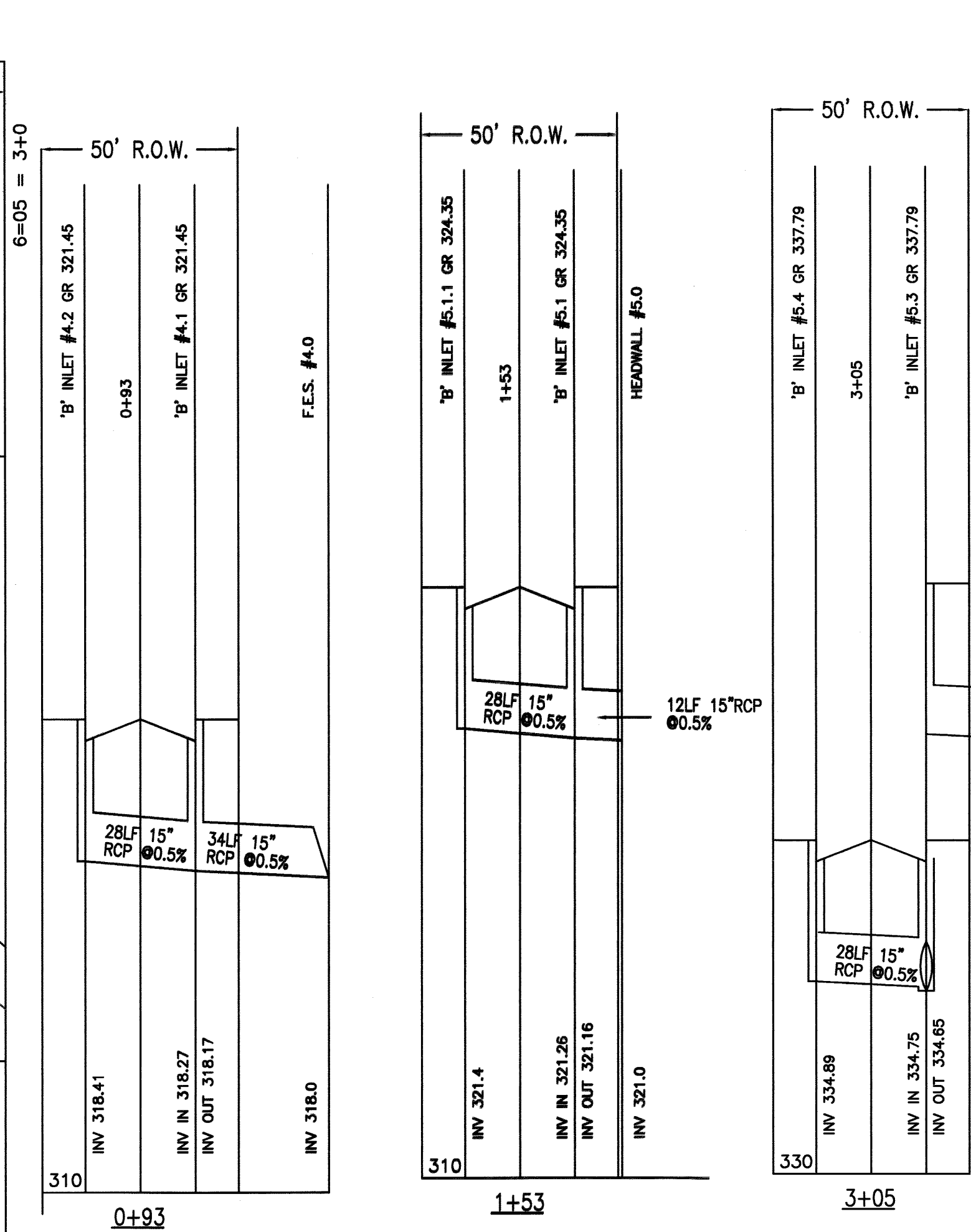


N:\CAD Drawings\2014\14-026\SUBDIVISION\FINAL\REV\14-026SUBFINAL1.dwg, 10/20/2021 2:17:44 PM



WESTMINSTER COURT PROFILE
 SCALE: 1" = 30' HORIZ.
 1" = 3' VERT.



BIO BASIN 'A'
BIO BASIN 'B'
 SCALE: 1" = 30' HORIZ.
 1" = 3' VERT.

DRAWN BY: SP	CHECKED BY: WGH
JOB No. 14-026	
BOOK	
SCALE 1" = 30'	
 GRAPHIC SCALE	
DATE APRIL 30, 2021	
REVISIONS OCTOBER 20, 2021	
CERTIFICATE OF AUTHORIZATION No. 24GA27959700	
NOTES	
 Murphy & Hollows Associates LLC CIVIL ENGINEERING AND SURVEYING 331 ELM STREET, STIRLING, NJ 07980 908.580.1255 murphyhollows@gmail.com	
FINAL MAJOR SUBDIVISION PLAN WESTMINSTER PRESBYTERIAN CHURCH LOT 32 BLOCK 2006 MOUNTAIN AVENUE & PLAINFIELD AVENUE TOWNSHIP OF BERKELEY HEIGHTS UNION COUNTY NEW JERSEY CONSTRUCTION PROFILE	
AIDAN T. MURPHY N.J. LIC. PROFESSIONAL ENGINEER #21319 N.J. PROFESSIONAL PLANNER #2531	
 WILLIAM G. HOLLOWES N.J. LIC. PROFESSIONAL ENGINEER & LAND SURVEYOR #27473 N.J. PROFESSIONAL PLANNER #2530	
FILE LF14-026	SHEET 7 OF 13