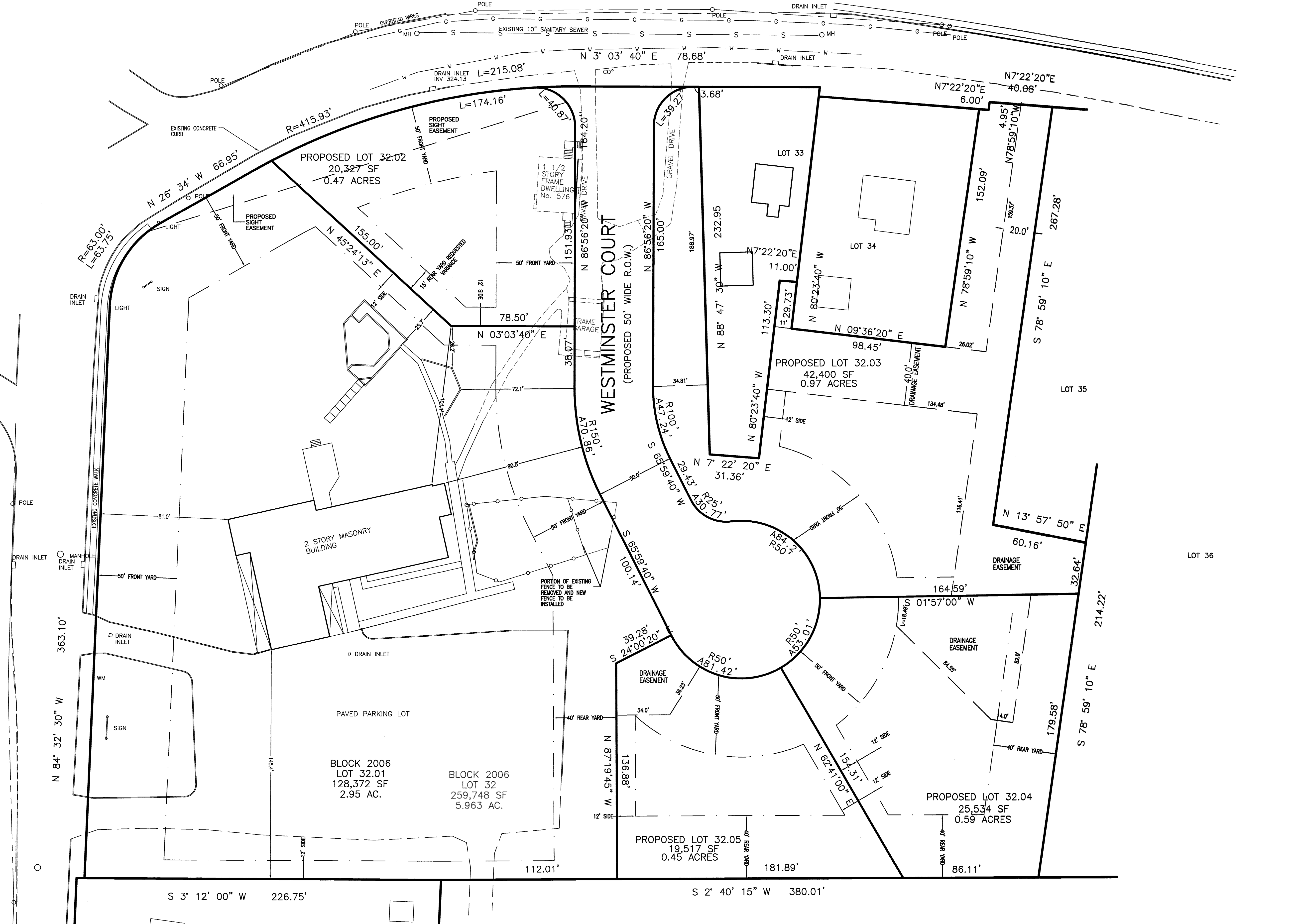




PLAINFIELD AVENUE
(60' WIDE R.O.W.)

MOUNTAIN AVENUE
(60' WIDE R.O.W.)



DRAWN BY:	SP	CHECKED BY:	WGH
JOB No.	14-026		
BOOK			
SCALE	1" = 30'		
GRAPHIC SCALE			

DATE
APRIL 30, 2021

REVISIONS
OCTOBER 20, 2021

CERTIFICATE OF AUTHORIZATION
No. 24G27959700

NOTES

Murphy & Hollows Associates LLC
CIVIL ENGINEERING AND SURVEYING
331 ELM STREET, STIRLING, NJ 07980
908.580.1255 murphyhollows@gmail.com

FINAL MAJOR SUBDIVISION PLAN
WESTMINSTER PRESBYTERIAN CHURCH
LOT 32 BLOCK 2006
MOUNTAIN AVENUE &
PLAINFIELD AVENUE
TOWNSHIP OF
BERKELEY HEIGHTS
UNION COUNTY
NEW JERSEY
LAYOUT PLAN

AIDAN T. MURPHY
N.J. LIC. PROFESSIONAL ENGINEER #21319
N.J. PROFESSIONAL PLANNER #2531

William G. Hollows
WILLIAM G. HOLLOWES
N.J. LIC. PROFESSIONAL ENGINEER
& LAND SURVEYOR #27473
N.J. PROFESSIONAL PLANNER #2530

FILE	SHEET
LF14-026	3 OF 13

NOTE: HOUSES AND GRADING SHOWN ON PROPOSED LOTS ARE CONCEPTUAL ONLY. A DETAILED GRADING PLAN WILL BE PREPARED AS PART OF THE BUILDING PERMIT APPLICATION.