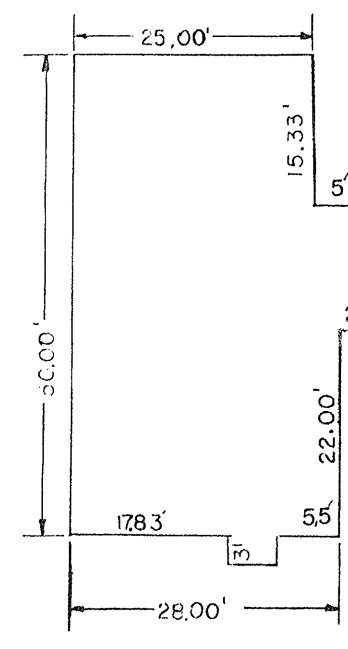
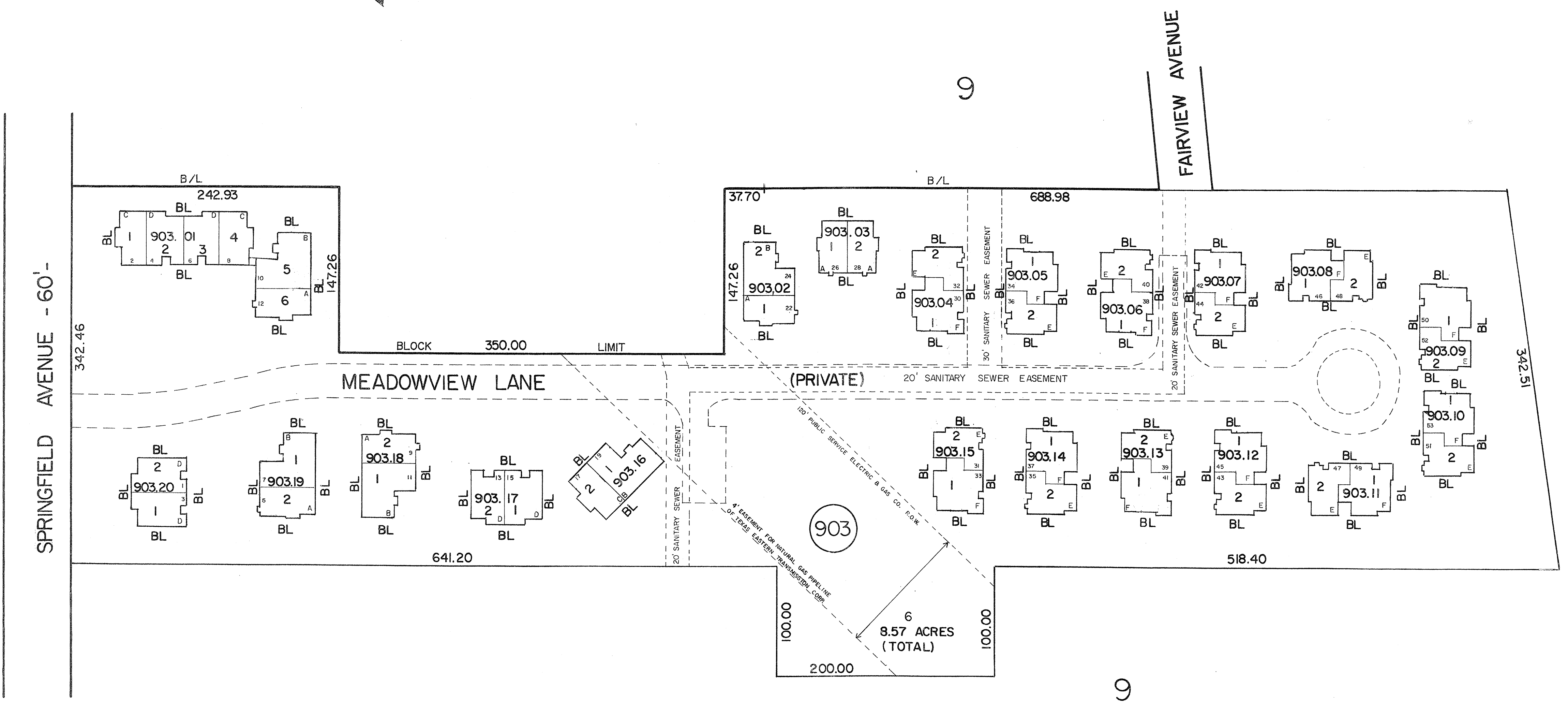
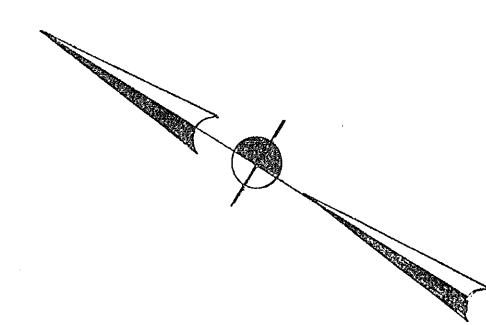
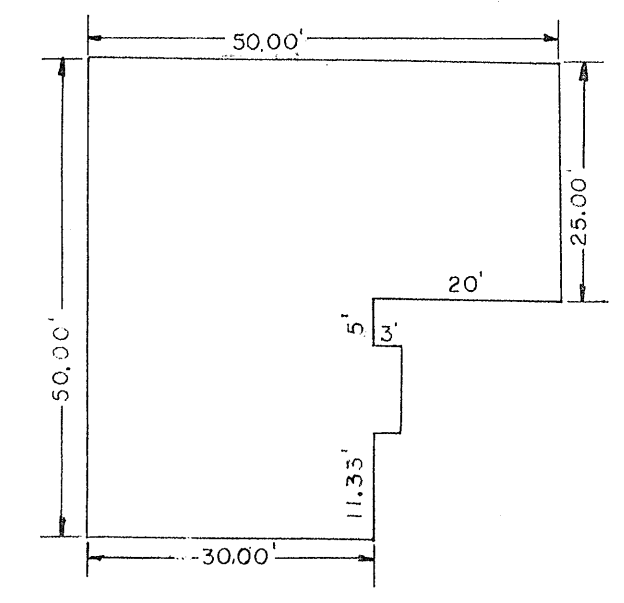


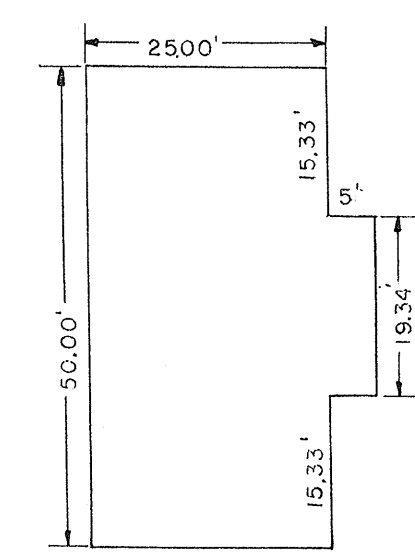
REVISIONS		
DATE	NAME	NO.
DEC. 20, 1994	MASER, SOSINSKI & ASSOCIATES, P.A. BY MICHAEL THOMAS ANGELINE, L.S.	14156
DEC. 31, 2007	WERNER A. MALL, P.L.S.	37201



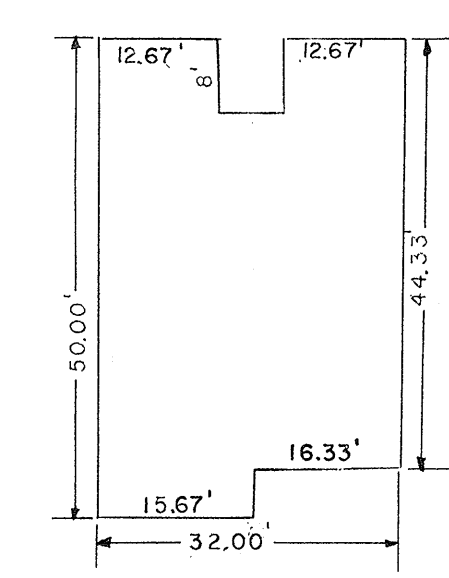
**UNIT A**  
1988 S.F.



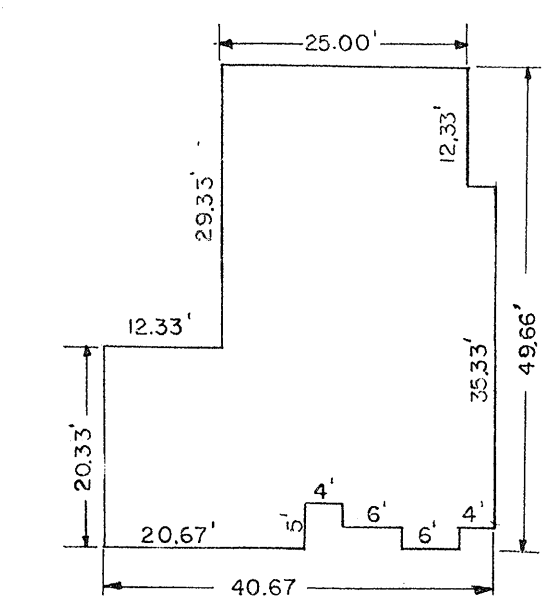
**UNIT B**  
2325 S.F.



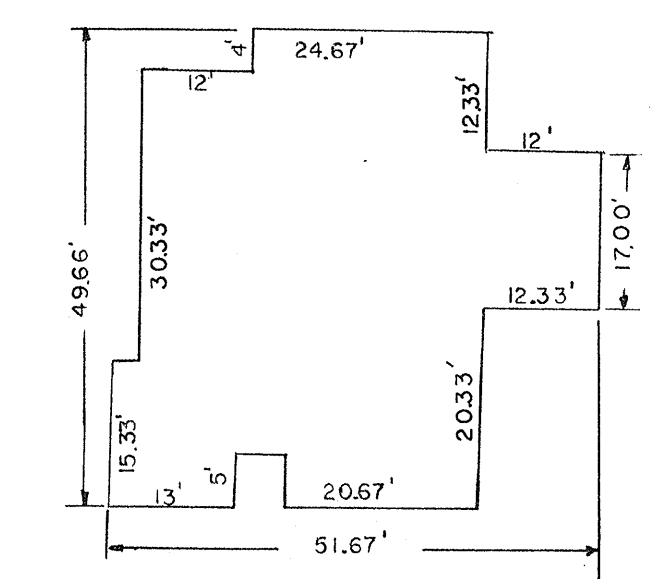
**UNIT C**  
1959 S.F.



**UNIT D**  
1861 S.F.



**UNIT E**  
2101 S.F.



**UNIT F**  
2152 S.F.

NEW JERSEY DEPARTMENT OF THE TREASURY  
DIVISION OF TAXATION  
LOCAL PROPERTY BRANCH  
APPROVED AS A TAX MAP PURSUANT TO THE  
PROVISIONS OF CHAPTER 175, LAWS OF 1913, ETC.  
FOR THE DIRECTOR, DIVISION OF TAXATION  
  
BY: *Howard J. Shershinger* P.E. & L.S.  
LIC. # 15434 CHIEF ENGINEERING SECTION  
DATE: JUL 18 1988 SERIAL NO. 503

**TAX MAP**  
TOWNSHIP OF BERKELEY HEIGHTS  
UNION COUNTY, NEW JERSEY  
SCALE 1"=60' JANUARY 23, 1989  
HOWARD J. SHERSHINGER, P.E. & L.S. 16201  
TOWNSHIP ENGINEER