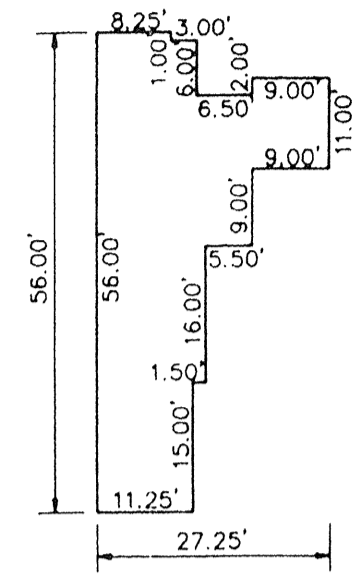
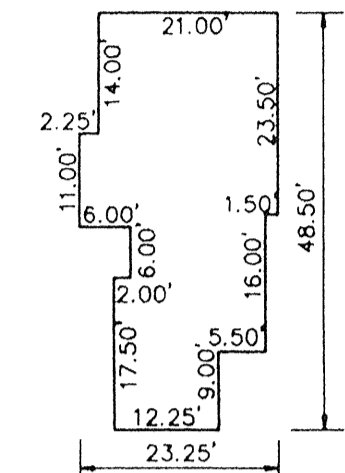


REVISIONS

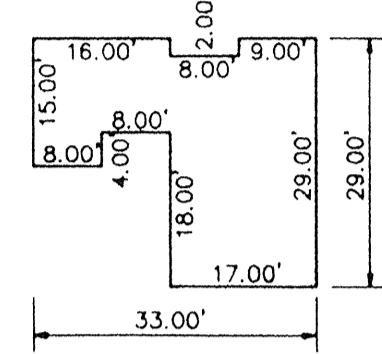
DATE	NAME	NO.
MARCH 15, 1995	MICHAEL T. ANGELINE	14156
DEC. 31, 2007	WERNER A. MALL, P.L.S.	37201



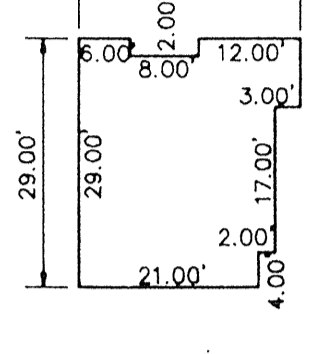
UNIT A  
868 S.F.



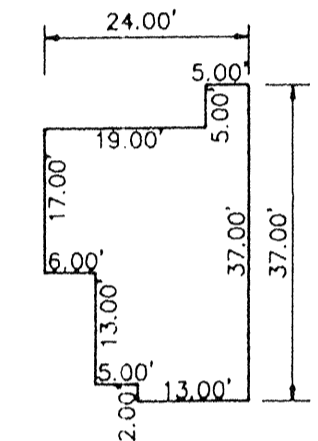
UNIT B  
903 S.F.



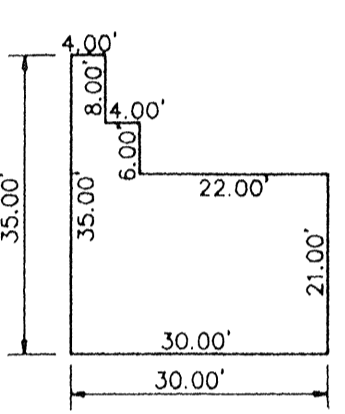
UNIT C  
685 S.F.



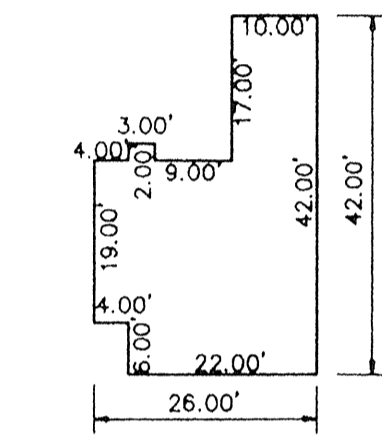
UNIT D  
667 S.F.



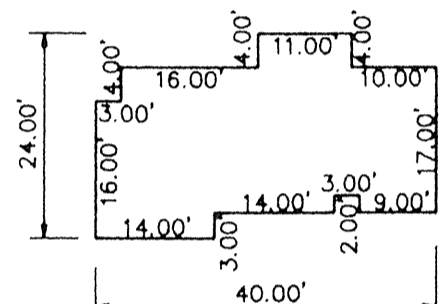
UNIT E  
693 S.F.



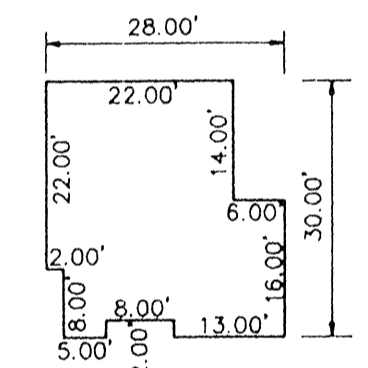
UNIT F  
710 S.F.



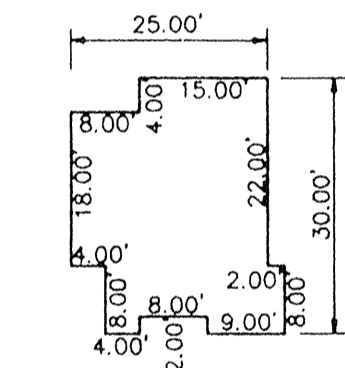
UNIT G  
802 S.F.



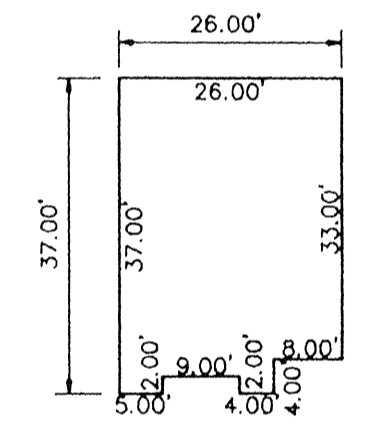
UNIT H  
748 S.F.



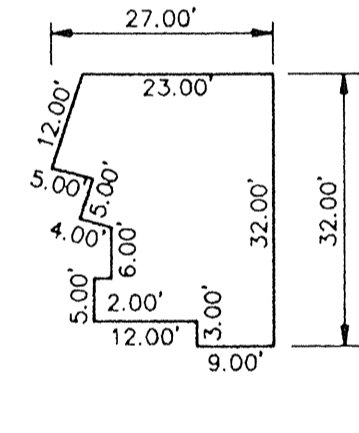
UNIT I  
724 S.F.



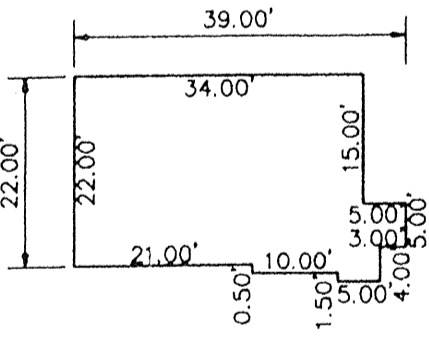
UNIT J  
626 S.F.



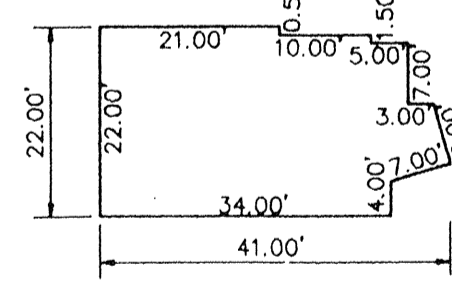
UNIT K  
912 S.F.



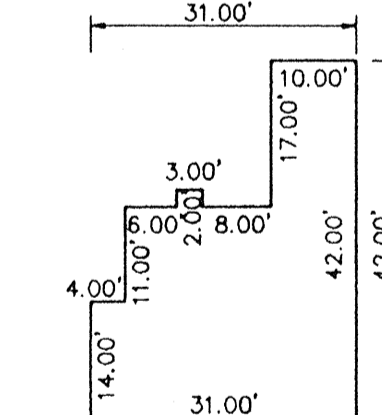
UNIT L  
698± S.F.



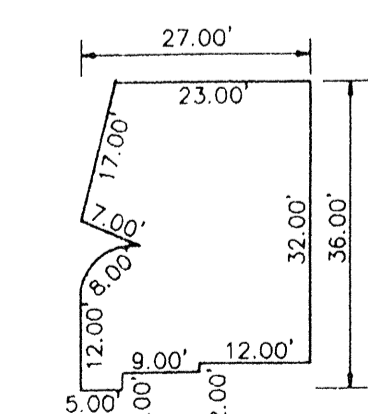
UNIT M  
792 S.F.



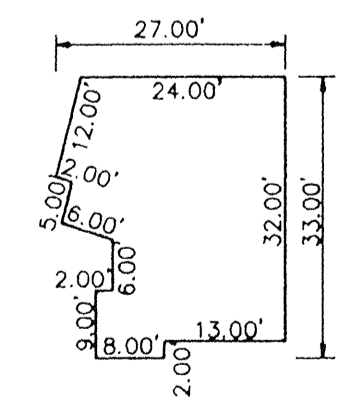
UNIT N  
800± S.F.



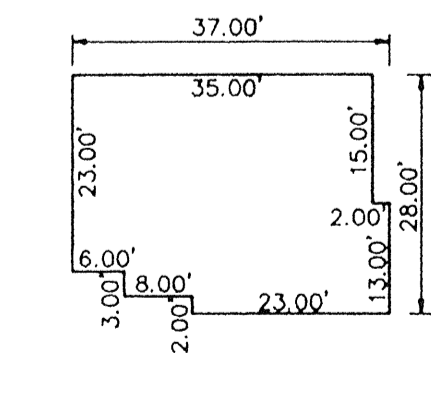
UNIT O  
907 S.F.



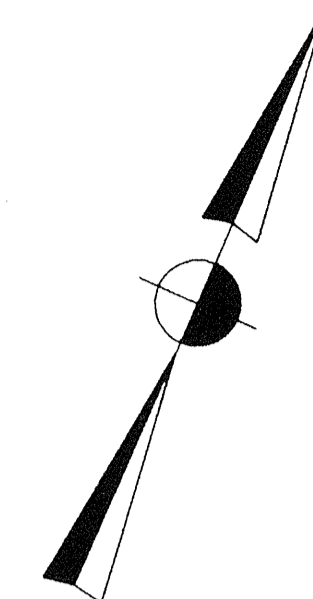
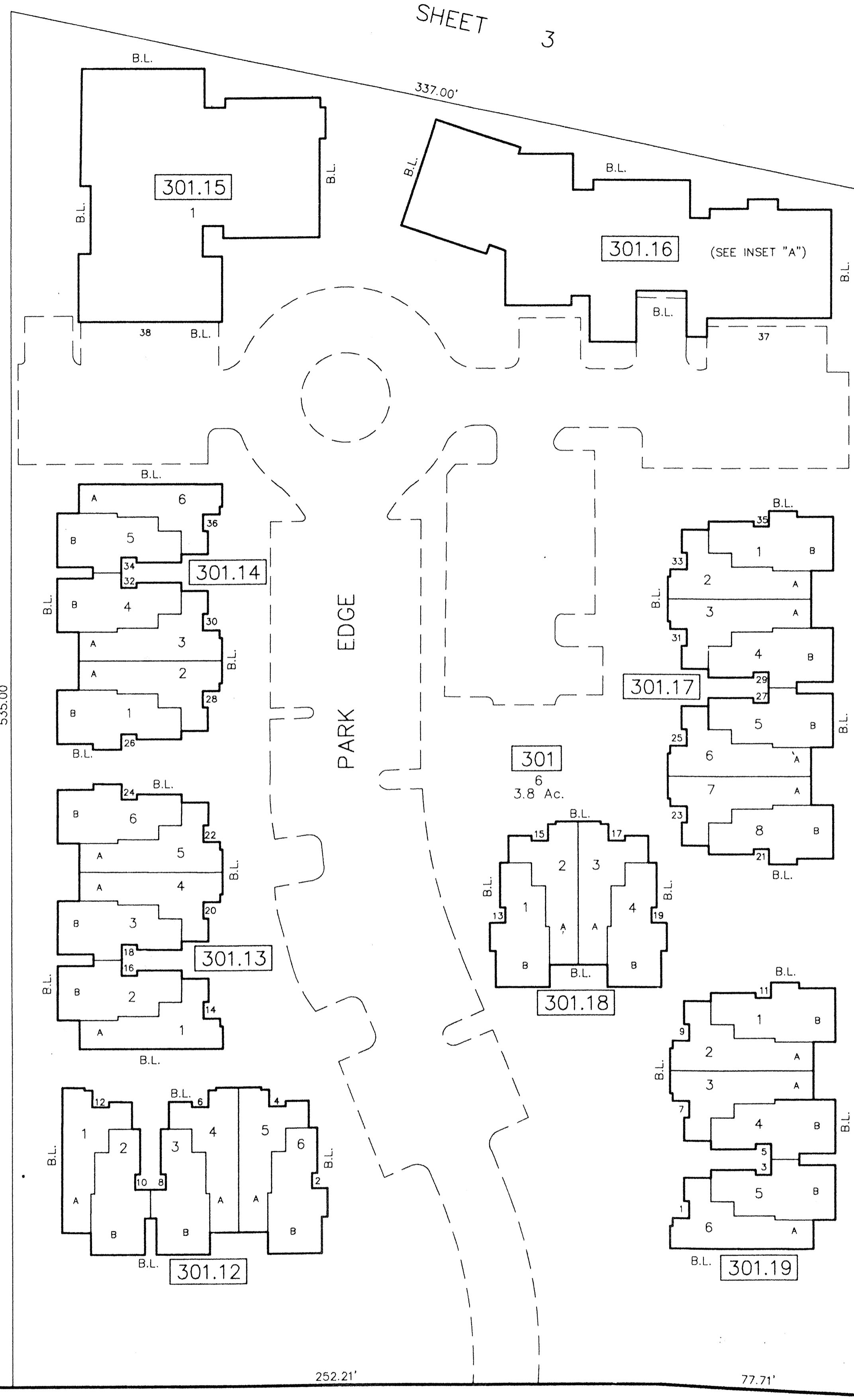
UNIT P  
856± S.F.



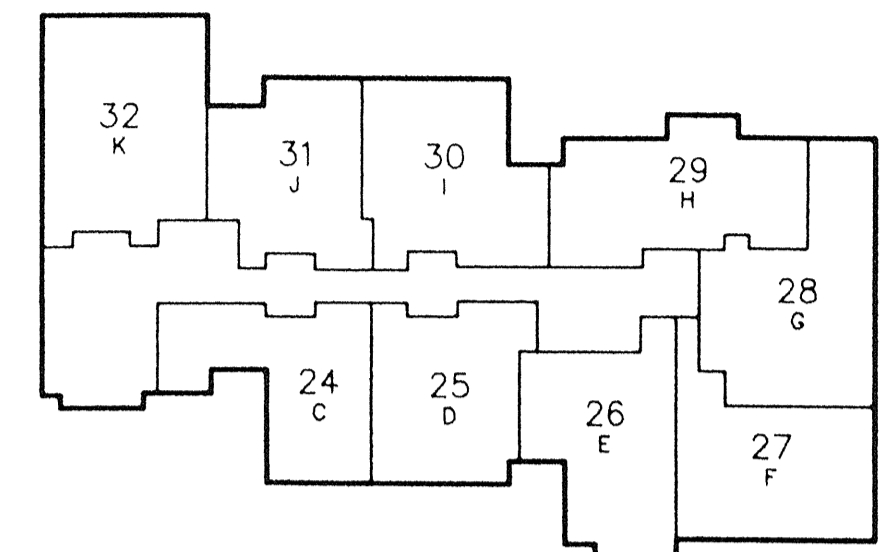
UNIT Q  
714± S.F.



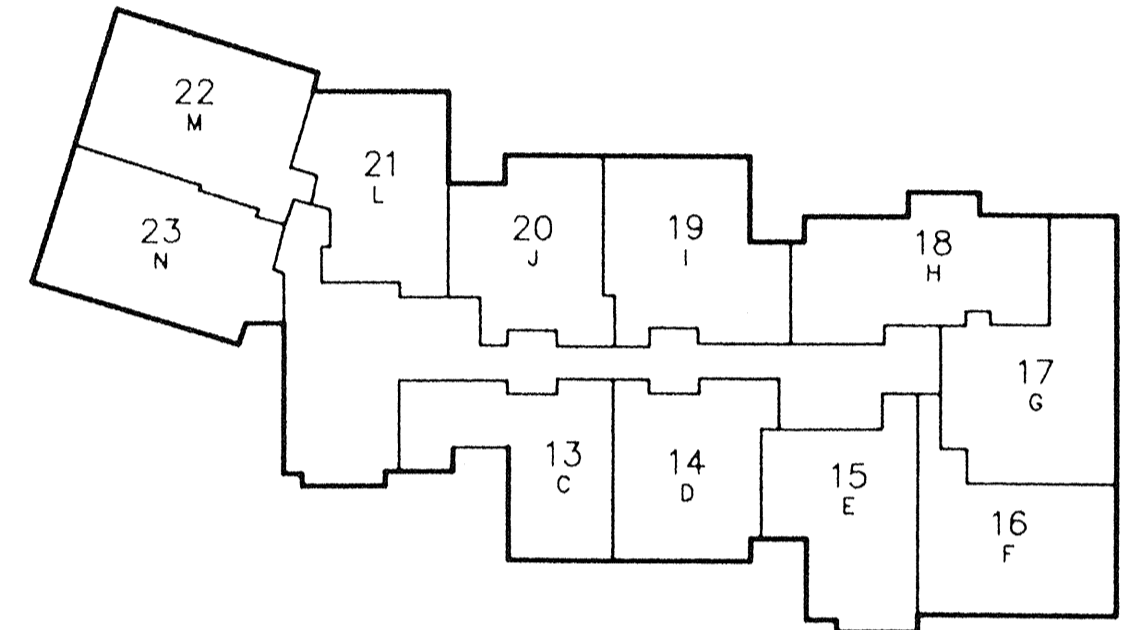
UNIT R  
960 S.F.



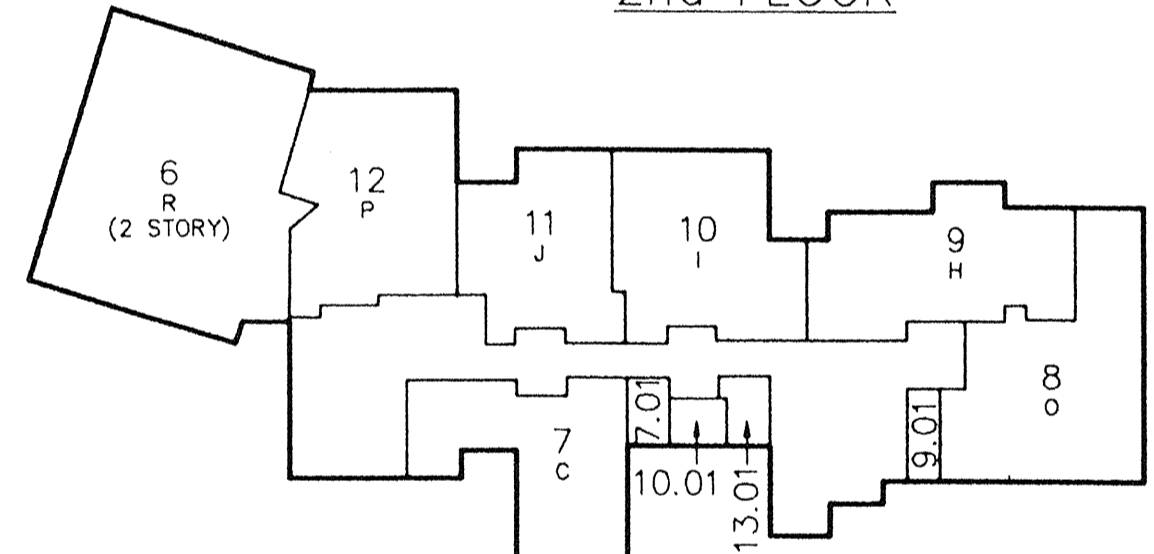
INSET "A" BLOCK 301.16



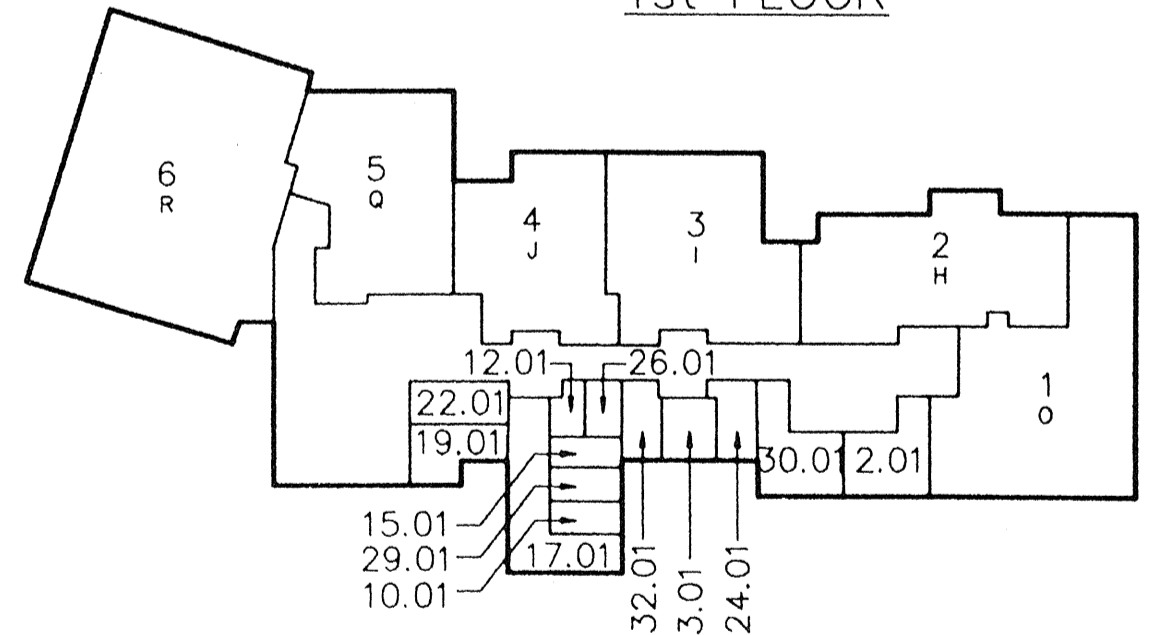
3rd FLOOR



2nd FLOOR



1st FLOOR



GARDEN LEVEL

SPRINGFIELD AVENUE

BRIARWOOD DRIVE

NEW JERSEY DEPARTMENT OF THE TREASURY  
DIVISION OF TAXATION  
LOCAL PROPERTY BRANCH  
APPROVED AS A TAX MAP PURSUANT TO THE  
PROVISIONS OF CHAPTER 175, LAWS OF 1913, ETC.  
FOR THE DIRECTOR, DIVISION OF TAXATION

BY: *Michael Thomas Angeline* P.E. & L.S.  
LIC. # 15434 (GEN. ENGINEERING DESIGN)

DATE: APR 18 1995 SERIAL NO. 503

**TAX MAP**  
TOWNSHIP OF BERKELEY HEIGHTS  
UNION COUNTY NEW JERSEY  
SCALE: 1"=30'  
DECEMBER 1994  
MICHAEL THOMAS ANGELINE, L.S.  
N.J. P.L.S. LIC. No. 14156  
MASER SOSINSKI & ASSOC., P.A.  
VICTORIA PLAZA, 30 FRENEAU AVENUE  
MATAWAN, N.J. 07747

SHEET 8

SHEET 3

SHEET 3