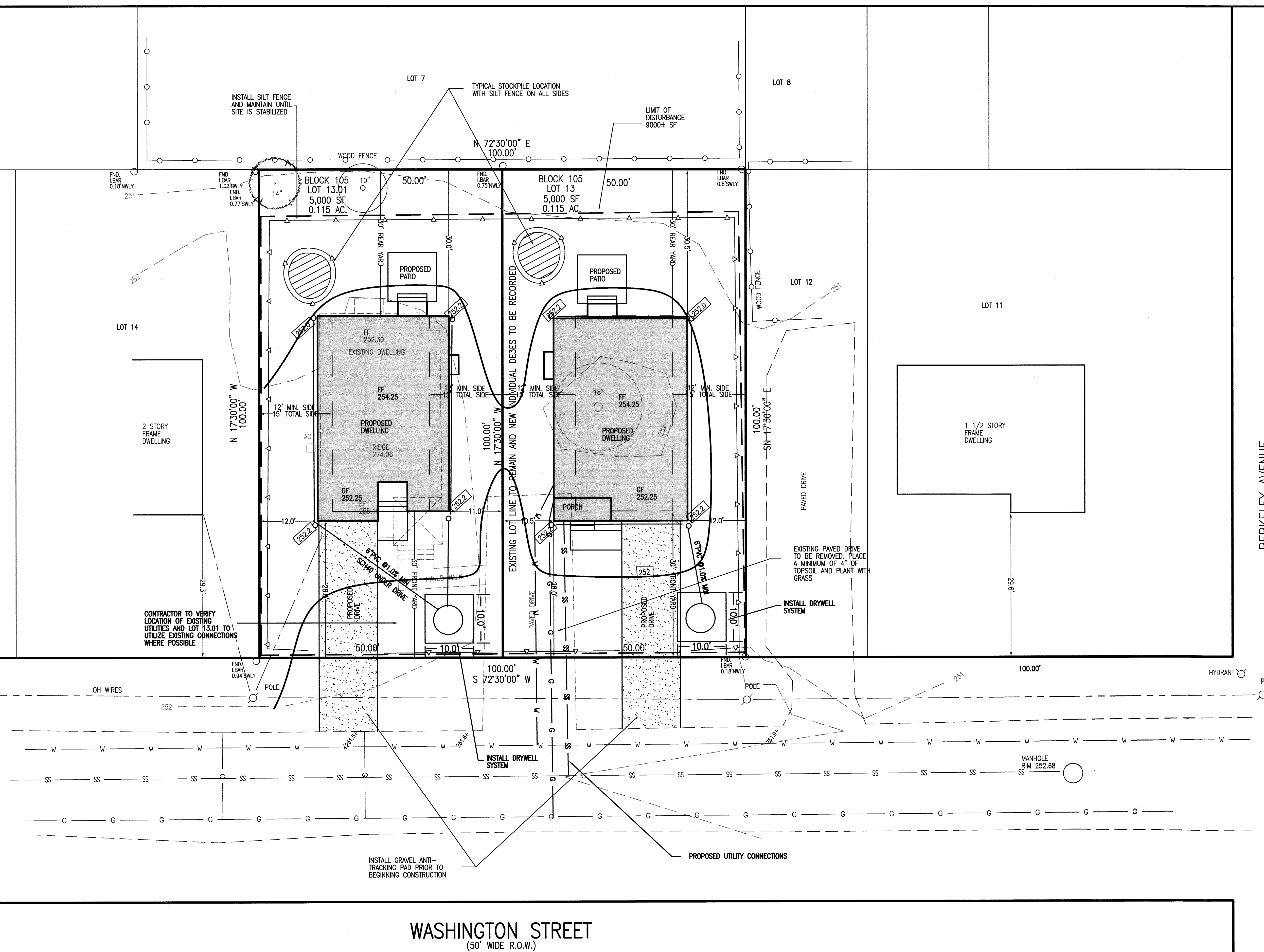
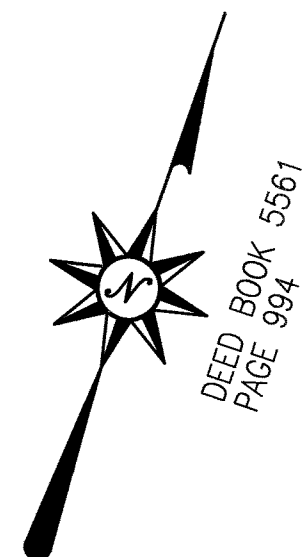


N:\CAD Drawings\2020\20-068\REV1\20-068SUB1.dwg, 9/28/2020 11:22:28 AM



DRAWN BY:	SP	CHECKED BY:	WGH
JOB No.	20-068		
BOOK			
SCALE	1" = 10'		
GRAPHIC SCALE			

DATE SEPTEMBER 15, 2020

REVISIONS

CERTIFICATE OF AUTHORIZATION No. 24GA27959700

NOTES

Murphy & Hollows Associates LLC
 CIVIL ENGINEERING AND SURVEYING
 192 CENTRAL AVENUE, STIRLING, NJ 07980
 908.590.1295 murphyhollows@gmail.com

MINOR SUBDIVISION OF
 LOTS 13 & 13.01
 BLOCK 105
 124 & 126 WASHINGTON STREET
 TOWNSHIP OF BERKELEY HEIGHTS
 UNION COUNTY
 NEW JERSEY
 SUBDIVISION/GRADING

AIDAN T. MURPHY
 N.J. LIC. PROFESSIONAL ENGINEER #21319
 1973-2016

WILLIAM G. HOLLOWES
 N.J. LIC. PROFESSIONAL ENGINEER & LAND SURVEYOR #27473
 N.J. PROFESSIONAL PLANNER #2530

FILE	LF20-068	SHEET	3
		OF	3

WASHINGTON STREET (50' WIDE R.O.W.)

BERKELEY AVENUE