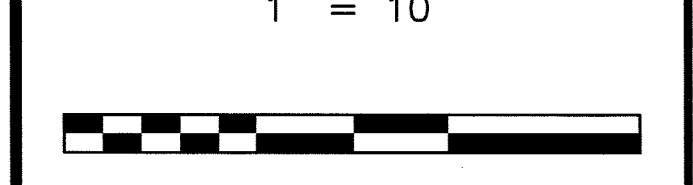


DRAWN BY: SP CHECKED BY: WGH

JOB No. 20-068

BOOK

SCALE 1" = 10'



GRAPHIC SCALE

DATE SEPTEMBER 15, 2020

REVISIONS

CERTIFICATE OF AUTHORIZATION No. 24GA27959700

NOTES

Notes section for the drawing.

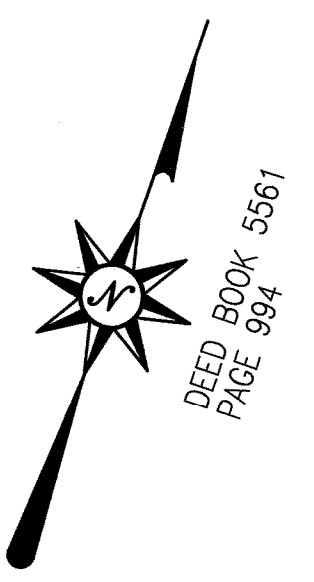
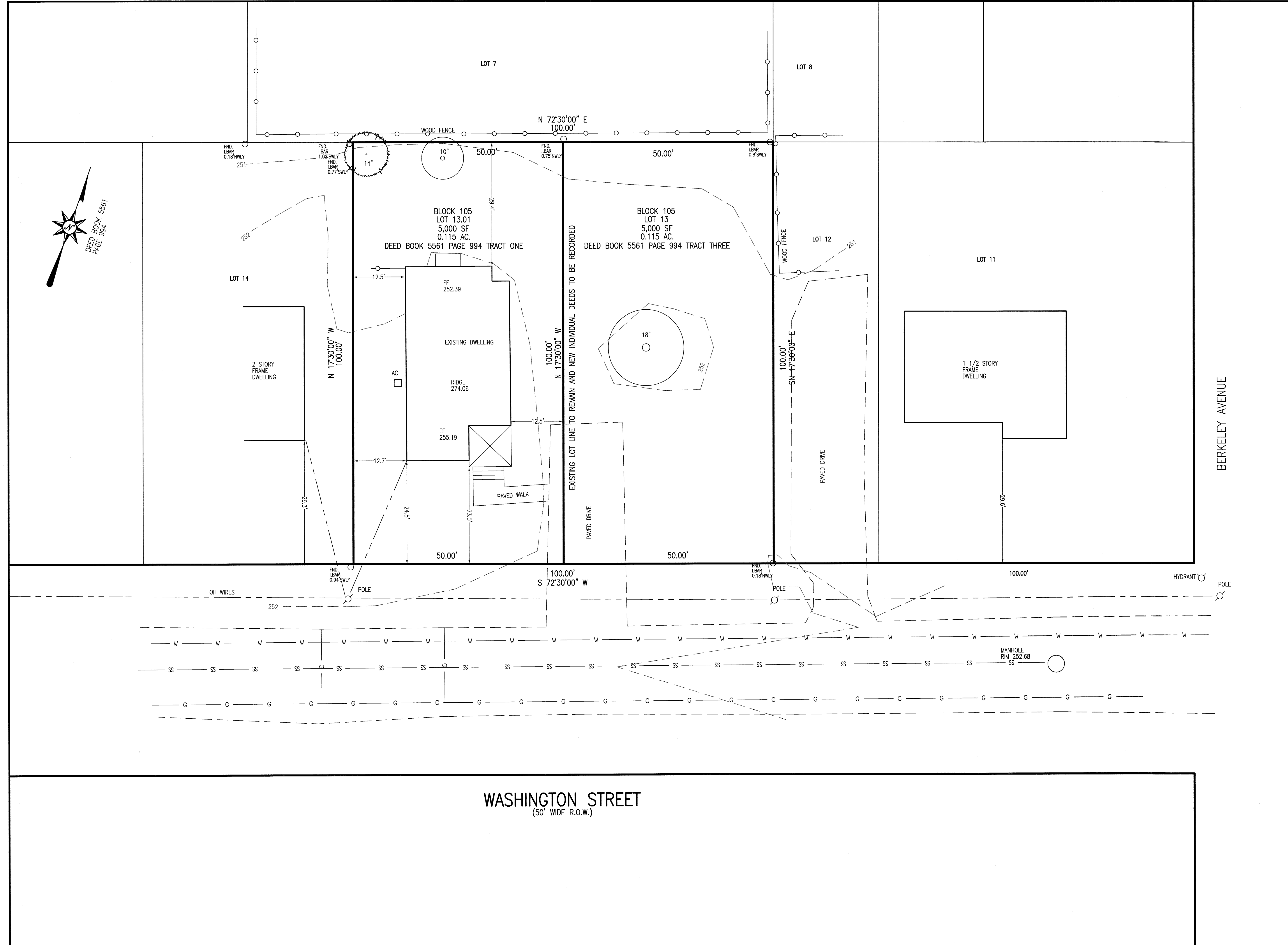
Murphy & Hollows Associates LLC
 CIVIL ENGINEERING AND SURVEYING
 192 CENTRAL AVENUE, STIRLING, NJ 07980
 908.580.1255 murphyhollows@gmail.com

MINOR SUBDIVISION OF
 LOTS 13 & 13.01
 BLOCK 105
 124 & 126 WASHINGTON STREET
 TOWNSHIP OF BERKELEY HEIGHTS
 UNION COUNTY NEW JERSEY
 EXISTING CONDITIONS

AIDAN T. MURPHY
 N.J. LIC. PROFESSIONAL ENGINEER #21319
 1973-2016

William G. Hollows
WILLIAM G. HOLLOWES
 N.J. LIC. PROFESSIONAL ENGINEER & LAND SURVEYOR #27473
 N.J. PROFESSIONAL PLANNER #2530

FILE LF20-068 SHEET 2 OF 3



N:\CAD Drawings\20-068\REV1\20-068SUB EX*.dwg, 9/28/2020 11:24:45 AM