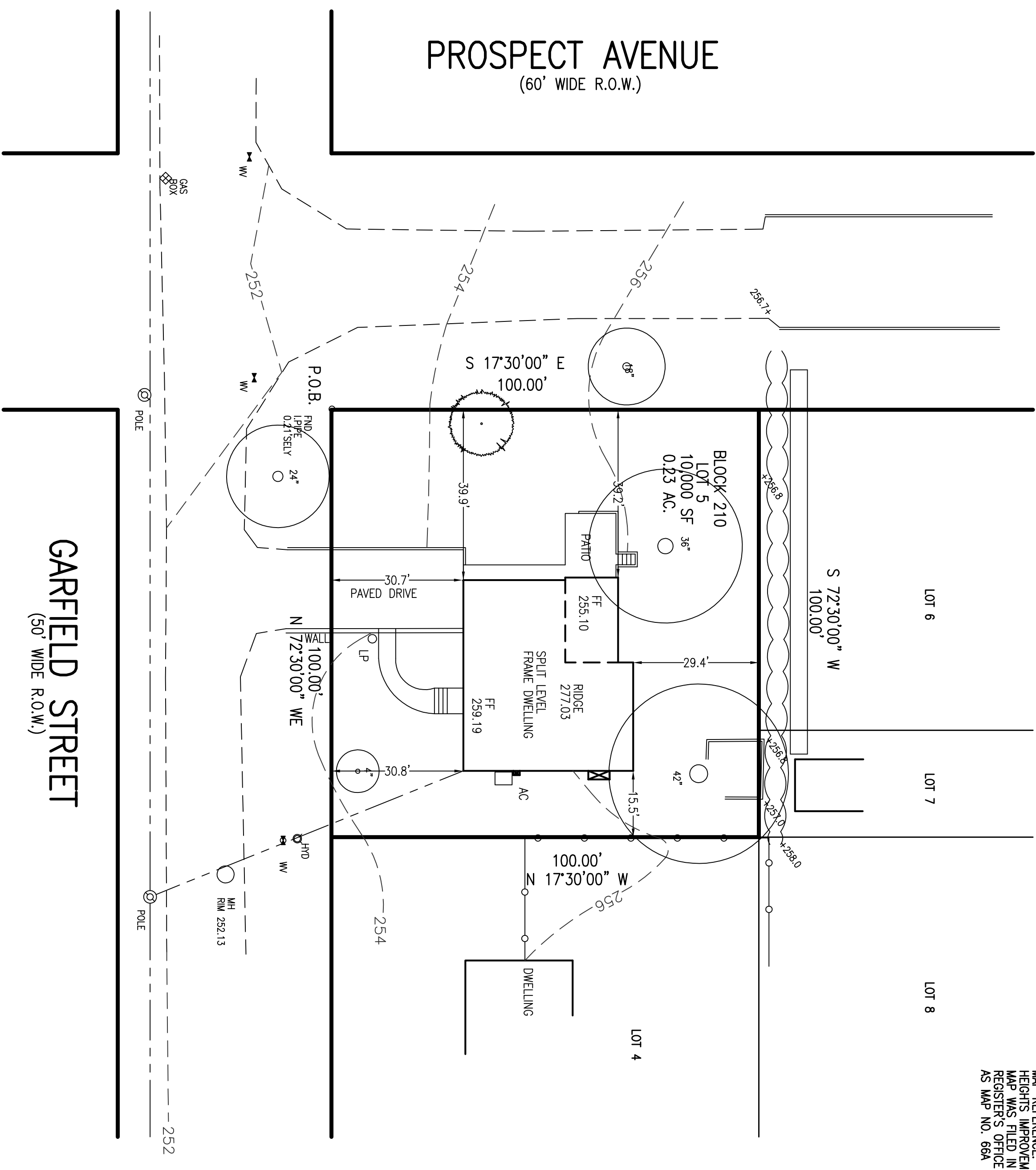
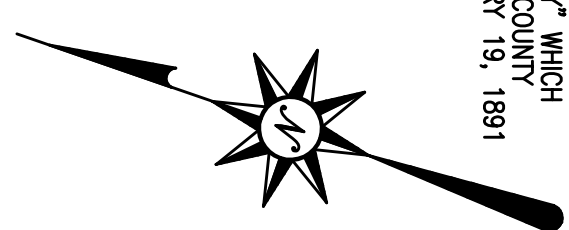
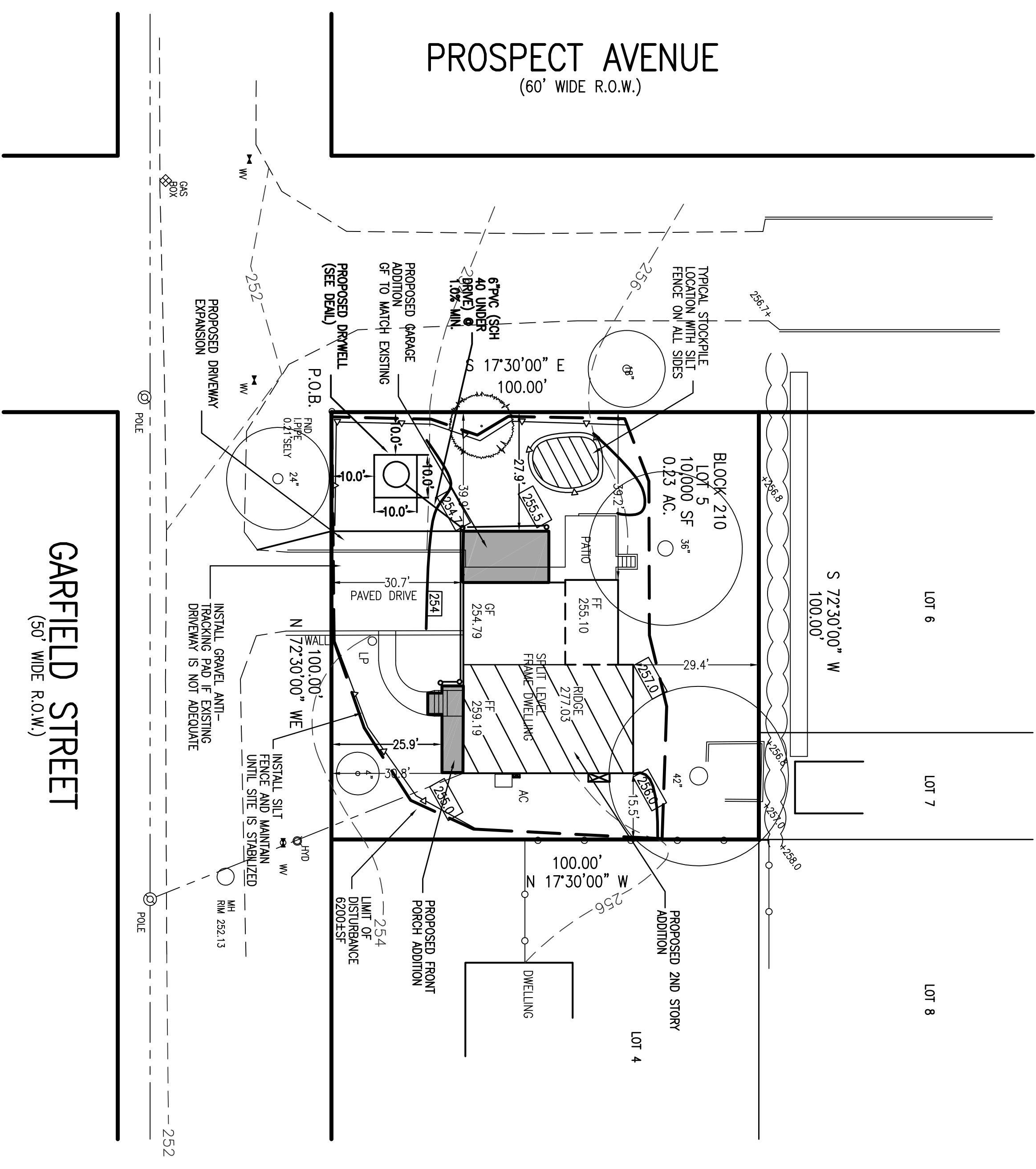


MAP REFERENCE: MAP NO. 1 BERKELEY HEIGHTS IMPROVEMENT COMPANY WHICH WAS FILED IN THE UNION COUNTY REGISTER'S OFFICE ON FEBRUARY 15, 1991 AS MAP NO. 69A



EXISTING CONDITIONS



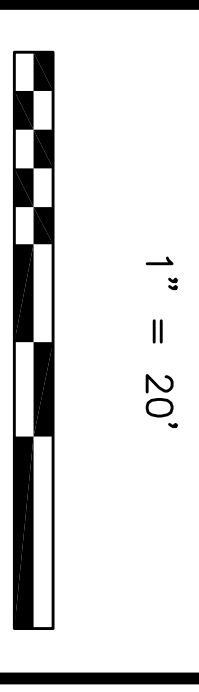
PROPOSED CONDITIONS

DRAWN BY: SP CHECKED BY: WGH

JOB No. 20-013

BOOK

SCALE 1" = 20'



GRAPHIC SCALE

DATE APRIL 30, 2020

REVISIONS

CERTIFICATE OF AUTHORIZATION No. 240627959700

NOTES

Murphy & Hollows Associates LLC
CIVIL ENGINEERING AND SURVEYING
1195 CENTRAL AVENUE, STURLING, NJ 07980
908.481.2525 FAX: 908.481.2526

VARIANCE PLAN

FOR
LOT 5 BLOCK 210
299 GARFIELD STREET
& PROSPECT AVENUE
TOWNSHIP OF
BERKELEY HEIGHTS
UNION COUNTY
NEW JERSEY
SURVEY/EXISTING CONDITIONS

AIDAN T. MURPHY
N.J. LIC. PROFESSIONAL ENGINEER #21319
1979-2018

William G. Hollows
WILLIAM G. HOLLOWES
N.J. LIC. PROFESSIONAL ENGINEER #21319
N.J. PROFESSIONAL PLANNER #2530

FILE	LF20-013	SHEET	2
		OF	3